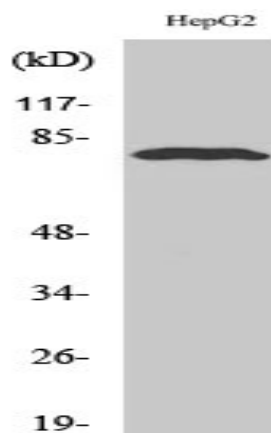


ADAR2 Polyclonal Antibody

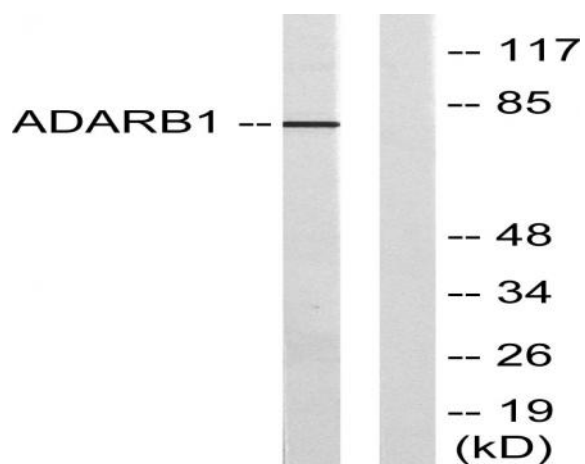
Catalog No :	YT0119
Reactivity :	Human;Mouse;Rat
Applications :	WB;IHC;IF;ELISA
Target :	ADAR2
Gene Name :	ADARB1
Protein Name :	Double-stranded RNA-specific editase 1
Human Gene Id :	104
Human Swiss Prot No :	P78563
Mouse Gene Id :	110532
Mouse Swiss Prot No :	Q91ZS8
Rat Gene Id :	25367
Rat Swiss Prot No :	P51400
Immunogen :	The antiserum was produced against synthesized peptide derived from human ADARB1. AA range:481-530
Specificity :	ADAR2 Polyclonal Antibody detects endogenous levels of ADAR2 protein.
Formulation :	Liquid in PBS containing 50% glycerol, 0.5% BSA and 0.02% sodium azide.
Source :	Polyclonal, Rabbit,IgG
Dilution :	WB 1:500 - 1:2000. IHC 1:100 - 1:300. ELISA: 1:20000.. IF 1:50-200
Purification :	The antibody was affinity-purified from rabbit antiserum by affinity-chromatography using epitope-specific immunogen.

Concentration :	1 mg/ml
Storage Stability :	-15°C to -25°C/1 year(Do not lower than -25°C)
Observed Band :	80kD
Background :	<p>This gene encodes the enzyme responsible for pre-mRNA editing of the glutamate receptor subunit B by site-specific deamination of adenosines. Studies in rat found that this enzyme acted on its own pre-mRNA molecules to convert an AA dinucleotide to an AI dinucleotide which resulted in a new splice site. Alternative splicing of this gene results in several transcript variants, some of which have been characterized by the presence or absence of an ALU cassette insert and a short or long C-terminal region. [provided by RefSeq, Jul 2008],</p>
Function :	<p>alternative products:Additional isoforms seem to exist,cofactor:Binds 1 inositol hexakisphosphate (IP6) per subunit.,function:Editing of the messenger RNAs for glutamate receptor (GluR) subunits by site-selective adenosine deamination. Edits both the GluR-B Q/R and R/G sites efficiently but converts the adenosine in hotspot1 much less efficiently.,similarity:Contains 1 A to I editase domain.,similarity:Contains 2 DRBM (double-stranded RNA-binding) domains.,</p>
Subcellular Location :	<p>Nucleus . Nucleus, nucleolus . Shuttles between nucleoli and the nucleoplasm. . ; [Isoform 1]: Nucleus . Nucleus, nucleolus . ; [Isoform 2]: Nucleus . Nucleus, nucleolus .</p>
Expression :	<p>Highly expressed in brain and heart and at lower levels in placenta. Fair expression in lung, liver and kidney. Detected in brain, heart, kidney, lung and liver (at protein level). . ; [Isoform 5]: Highly expressed in hippocampus and colon. Expressed in pediatric astrocytomas and the protein has a decreased RNA-editing activity. The decrease in RNA editing correlates with the grade of malignancy of the tumors, with the high grade tumors showing lower editing is seen.</p>
Tag :	hot
Sort :	1463
No3 :	ab290638
No4 :	1
Host :	Rabbit
Modifications :	Unmodified

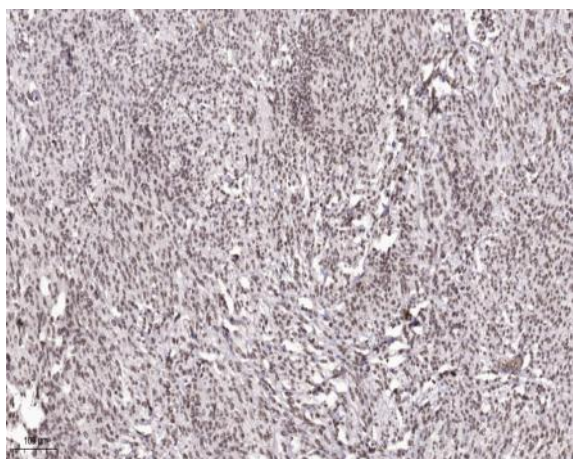
Products Images



Western Blot analysis of various cells using ADAR2 Polyclonal Antibody cells nucleus extracted by Minute TM Cytoplasmic and Nuclear Fractionation kit (SC-003, Inventbiotech, MN, USA).



Western blot analysis of lysates from HepG2 cells, using ADARB1 Antibody. The lane on the right is blocked with the synthesized peptide.



Immunohistochemical analysis of paraffin-embedded human Small intestinal stromal tumor. 1, Tris-EDTA, pH9.0 was used for antigen retrieval. 2 Antibody was diluted at 1:200 (4° overnight). 3, Secondary antibody was diluted at 1:200 (room temperature, 45min).