

ADAMTS-16 Polyclonal Antibody

Catalog No :	YT0114
Reactivity :	Human;Mouse
Applications :	IHC;IF;ELISA
Target :	ADAMTS-16
Gene Name :	ADAMTS16
Protein Name :	A disintegrin and metalloproteinase with thrombospondin motifs 16
Human Gene Id :	170690
Human Swiss Prot No :	Q8TE57
Mouse Gene Id :	271127
Mouse Swiss Prot No :	Q69Z28
Immunogen :	Synthesized peptide derived from ADAMTS-16 . at AA range: 440-520
Specificity :	ADAMTS-16 Polyclonal Antibody detects endogenous levels of ADAMTS-16 protein.
Formulation :	Liquid in PBS containing 50% glycerol, 0.5% BSA and 0.02% sodium azide.
Source :	Polyclonal, Rabbit,IgG
Dilution :	IHC 1:100 - 1:300. ELISA: 1:40000.. IF 1:50-200
Purification :	The antibody was affinity-purified from rabbit antiserum by affinity-chromatography using epitope-specific immunogen.
Concentration :	1 mg/ml
Storage Stability :	-15°C to -25°C/1 year(Do not lower than -25°C)

Molecularweight : 136kD

Background : This gene encodes a member of the ADAMTS (a disintegrin and metalloproteinase with thrombospondin motifs) protein family. ADAMTS family members share several distinct protein modules, including a propeptide region, a metalloproteinase domain, a disintegrin-like domain, and a thrombospondin type 1 (TS) motif. Individual members of this family differ in the number of C-terminal TS motifs, and some have unique C-terminal domains. The encoded preproprotein is proteolytically processed to generate the mature protein, which may inhibit chondrosarcoma cell proliferation and migration. This gene may regulate blood pressure. [provided by RefSeq, May 2016],

Function : cofactor: Binds 1 zinc ion per subunit., domain: The conserved cysteine present in the cysteine-switch motif binds the catalytic zinc ion, thus inhibiting the enzyme. The dissociation of the cysteine from the zinc ion upon the activation-peptide release activates the enzyme., domain: The spacer domain and the TSP type-1 domains are important for a tight interaction with the extracellular matrix., PTM: The precursor is cleaved by a furin endopeptidase., similarity: Contains 1 disintegrin domain., similarity: Contains 1 peptidase M12B domain., similarity: Contains 1 PLAC domain., similarity: Contains 6 TSP type-1 domains., tissue specificity: Expressed in fetal lung and kidney and in adult prostate and ovary.,

Subcellular Location : Secreted, extracellular space, extracellular matrix .

Expression : Expressed in fetal lung and kidney and in adult prostate and ovary.

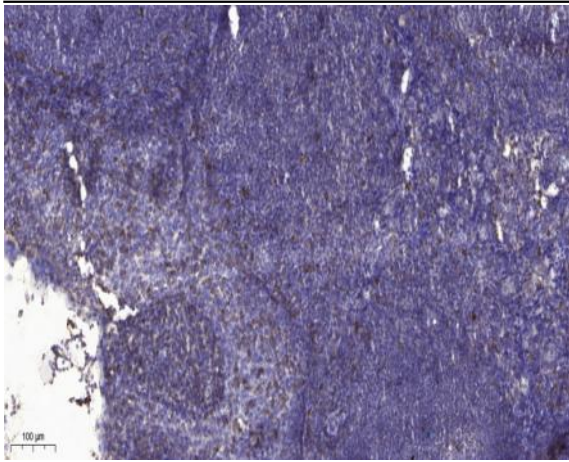
Sort : 1731

No4 : 1

Host : Rabbit

Modifications : Unmodified

Products Images



Immunohistochemical analysis of paraffin-embedded human tonsil. 1, Antibody was diluted at 1:200(4 ° overnight). 2, Tris-EDTA,pH9.0 was used for antigen retrieval. 3,Secondary antibody was diluted at 1:200(room temperature, 30min).