

**ADAMDEC1 Polyclonal Antibody**

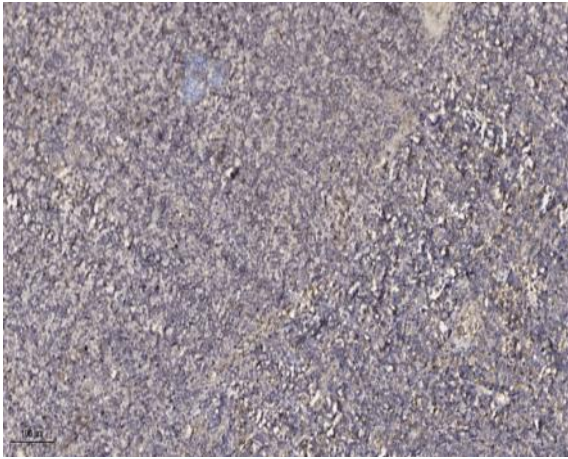
<b>Catalog No :</b>	YT0111
<b>Reactivity :</b>	Human;Rat;Mouse;
<b>Applications :</b>	IHC;IF;ELISA
<b>Target :</b>	ADAMDEC1
<b>Gene Name :</b>	ADAMDEC1
<b>Protein Name :</b>	ADAM DEC1
<b>Human Gene Id :</b>	27299
<b>Human Swiss Prot No :</b>	O15204
<b>Mouse Swiss Prot No :</b>	Q9R0X2
<b>Immunogen :</b>	Synthesized peptide derived from ADAMDEC1 . at AA range: 10-90
<b>Specificity :</b>	ADAMDEC1 Polyclonal Antibody detects endogenous levels of ADAMDEC1 protein.
<b>Formulation :</b>	Liquid in PBS containing 50% glycerol, 0.5% BSA and 0.02% sodium azide.
<b>Source :</b>	Polyclonal, Rabbit,IgG
<b>Dilution :</b>	IHC 1:100 - 1:300. ELISA: 1:40000.. IF 1:50-200
<b>Purification :</b>	The antibody was affinity-purified from rabbit antiserum by affinity-chromatography using epitope-specific immunogen.
<b>Concentration :</b>	1 mg/ml
<b>Storage Stability :</b>	-15°C to -25°C/1 year(Do not lower than -25°C)
<b>Observed Band :</b>	52kD

---

<b>Background :</b>	This encoded protein is thought to be a secreted protein belonging to the disintegrin metalloproteinase family. Its expression is upregulated during dendritic cells maturation. This protein may play an important role in dendritic cell function and their interactions with germinal center T cells. [provided by RefSeq, Jul 2008],
<b>Function :</b>	cofactor: Binds 1 zinc ion per subunit., function: May play an important role in the control of the immune response and during pregnancy., induction: Induced during DC maturation and up-regulated in response to T-cell signals. In macrophage up-regulated by lipopolysaccharide (LPS). Up-regulated by 1 alpha, 25 dihydroxyvitamin D3 during differentiation of primary monocyte into macrophage., similarity: Contains 1 disintegrin domain., similarity: Contains 1 peptidase M12B domain., tissue specificity: Expressed highly in the small intestine and appendix, moderately in lymph node, mucosal lining of the colon, thymus, spleen and very weakly in the bone marrow. Predominantly expressed in dendritic cells (DC) of the germinal center. Weakly expressed in monocyte and highly expressed in macrophage. Absent in immature DC.,
<b>Subcellular Location :</b>	Secreted .
<b>Expression :</b>	Expressed highly in the small intestine and appendix, moderately in lymph node, mucosal lining of the colon, thymus, spleen and very weakly in the bone marrow. Predominantly expressed in dendritic cells (DC) of the germinal center. Weakly expressed in monocyte and highly expressed in macrophage. Absent in immature DC.
<b>Sort :</b>	1728
<b>No4 :</b>	1
<b>Host :</b>	Rabbit
<b>Modifications :</b>	Unmodified

---

## Products Images



Immunohistochemical analysis of paraffin-embedded human tonsil. 1, Antibody was diluted at 1:200(4 ° overnight). 2, Tris-EDTA,pH9.0 was used for antigen retrieval. 3,Secondary antibody was diluted at 1:200(room temperature, 30min).