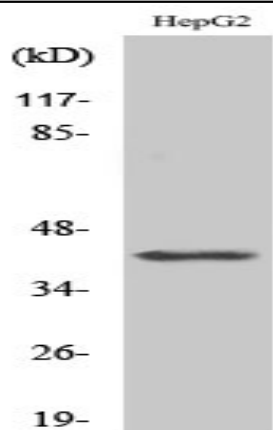


Actin- κ Polyclonal Antibody

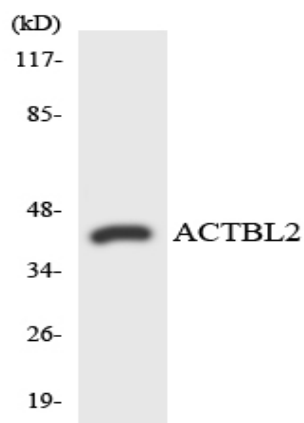
Catalog No :	YT0105
Reactivity :	Human;Mouse
Applications :	WB;ELISA
Target :	Actin- κ
Gene Name :	ACTBL2
Protein Name :	Beta-actin-like protein 2
Human Gene Id :	345651
Human Swiss Prot No :	Q562R1
Mouse Gene Id :	238880
Mouse Swiss Prot No :	Q8BFZ3
Immunogen :	The antiserum was produced against synthesized peptide derived from human ACTBL2. AA range:81-130
Specificity :	Actin- κ Polyclonal Antibody detects endogenous levels of Actin- κ protein.
Formulation :	Liquid in PBS containing 50% glycerol, 0.5% BSA and 0.02% sodium azide.
Source :	Polyclonal, Rabbit,IgG
Dilution :	WB 1:500 - 1:2000. ELISA: 1:20000. Not yet tested in other applications.
Purification :	The antibody was affinity-purified from rabbit antiserum by affinity-chromatography using epitope-specific immunogen.
Concentration :	1 mg/ml
Storage Stability :	-15°C to -25°C/1 year(Do not lower than -25°C)

Observed Band :	40kD
Cell Pathway :	Adherens_Junction
Background :	<p>function:Actins are highly conserved proteins that are involved in various types of cell motility and are ubiquitously expressed in all eukaryotic cells.,miscellaneous:In vertebrates 3 main groups of actin isoforms, alpha, beta and gamma have been identified. The alpha actins are found in muscle tissues and are a major constituent of the contractile apparatus. The beta and gamma actins coexist in most cell types as components of the cytoskeleton and as mediators of internal cell motility.,similarity:Belongs to the actin family.,subunit:Polymerization of globular actin (G-actin) leads to a structural filament (F-actin) in the form of a two-stranded helix. Each actin can bind to 4 others (By similarity). Interacts with PFN1 and PFDN1.,</p>
Function :	<p>function:Actins are highly conserved proteins that are involved in various types of cell motility and are ubiquitously expressed in all eukaryotic cells.,miscellaneous:In vertebrates 3 main groups of actin isoforms, alpha, beta and gamma have been identified. The alpha actins are found in muscle tissues and are a major constituent of the contractile apparatus. The beta and gamma actins coexist in most cell types as components of the cytoskeleton and as mediators of internal cell motility.,similarity:Belongs to the actin family.,subunit:Polymerization of globular actin (G-actin) leads to a structural filament (F-actin) in the form of a two-stranded helix. Each actin can bind to 4 others (By similarity). Interacts with PFN1 and PFDN1.,</p>
Subcellular Location :	Cytoplasm, cytoskeleton .
Expression :	Endometrial tumor,Hepatoma,
Tag :	hot
Sort :	1718
No4 :	1
Host :	Rabbit
Modifications :	Unmodified

Products Images



Western Blot analysis of various cells using Actin- κ Polyclonal Antibody



Western blot analysis of the lysates from HUVECcells using ACTBL2 antibody.