

## Actin Polyclonal Antibody

<b>Catalog No :</b>	YT0096
<b>Reactivity :</b>	Human;Mouse;Rat;Fish
<b>Applications :</b>	WB;IHC;IF;ELISA
<b>Target :</b>	Actin pan
<b>Fields :</b>	>>Rap1 signaling pathway;>>Phagosome;>>Apoptosis;>>Hippo signaling pathway;>>Focal adhesion;>>Adherens junction;>>Tight junction;>>Platelet activation;>>Neutrophil extracellular trap formation;>>Leukocyte transendothelial migration;>>Thermogenesis;>>Regulation of actin cytoskeleton;>>Thyroid hormone signaling pathway;>>Oxytocin signaling pathway;>>Gastric acid secretion;>>Amyotrophic lateral sclerosis;>>Bacterial invasion of epithelial cells;>>Vibrio cholerae infection;>>Pathogenic Escherichia coli infection;>>Shigellosis;>>Salmonella infection;>>Yersinia infection;>>Influenza A;>>Proteoglycans in cancer;>>Hepatocellular carcinoma;>>Hypertrophic cardiomyopathy;>>Arrhythmogenic right ventricular cardiomyopathy;>>Dilated cardiomyopathy;>>Viral myocarditis;>>Fluid shear stress and atherosclerosis
<b>Gene Name :</b>	ACTG1
<b>Protein Name :</b>	Actin cytoplasmic 2
<b>Human Gene Id :</b>	60/71
<b>Human Swiss Prot No :</b>	P60709/Q9BYX7/P63261
<b>Mouse Gene Id :</b>	11461/11465
<b>Rat Gene Id :</b>	81822/100361457
<b>Rat Swiss Prot No :</b>	P60711/P63259
<b>Immunogen :</b>	The antiserum was produced against synthesized peptide derived from human Actin. AA range:326-375
<b>Specificity :</b>	Actin Polyclonal Antibody detects endogenous levels of Actin protein.

---

<b>Formulation :</b>	Liquid in PBS containing 50% glycerol, 0.5% BSA and 0.02% sodium azide.
<b>Source :</b>	Polyclonal, Rabbit,IgG
<b>Dilution :</b>	WB 1:500 - 1:2000. IHC 1:100 - 1:300. ELISA: 1:10000.. IF 1:50-200
<b>Purification :</b>	The antibody was affinity-purified from rabbit antiserum by affinity-chromatography using epitope-specific immunogen.
<b>Concentration :</b>	1 mg/ml
<b>Storage Stability :</b>	-15°C to -25°C/1 year(Do not lower than -25°C)
<b>Observed Band :</b>	45kD
<b>Cell Pathway :</b>	Focal adhesion;Adherens_Junction;Adherens_Junction;Leukocyte transendothelial migration;Regulates Actin and Cytoskeleton;Vibrio cholerae infection;Pathogenic Escherichia coli infection;Hypertrophic ca
<b>Background :</b>	This gene encodes one of six different actin proteins. Actins are highly conserved proteins that are involved in cell motility, structure, and integrity. This actin is a major constituent of the contractile apparatus and one of the two nonmuscle cytoskeletal actins. [provided by RefSeq, Jul 2008],
<b>Function :</b>	disease:Defects in ACTB are a cause of dystonia juvenile-onset (DYTJ) [MIM:607371]. DYTJ is a form of dystonia with juvenile onset. Dystonia is defined by the presence of sustained involuntary muscle contraction, often leading to abnormal postures. DYTJ patients manifest progressive, generalized, dopa-unresponsive dystonia, developmental malformations and sensory hearing loss.,function:Actins are highly conserved proteins that are involved in various types of cell motility and are ubiquitously expressed in all eukaryotic cells.,miscellaneous:In vertebrates 3 main groups of actin isoforms, alpha, beta and gamma have been identified. The alpha actins are found in muscle tissues and are a major constituent of the contractile apparatus. The beta and gamma actins coexist in most cell types as components of the cytoskeleton and as mediators of internal cell motility.,similarity:Belongs to the
<b>Subcellular Location :</b>	Cytoplasm, cytoskeleton . Nucleus . Localized in cytoplasmic mRNP granules containing untranslated mRNAs. .
<b>Expression :</b>	B-cell lymphoma,Brain,Cajal-Retzius cell,Eye,Fetal brain cortex,Foreskin,Hepatocellular car
<b>Tag :</b>	orthogonal,hot

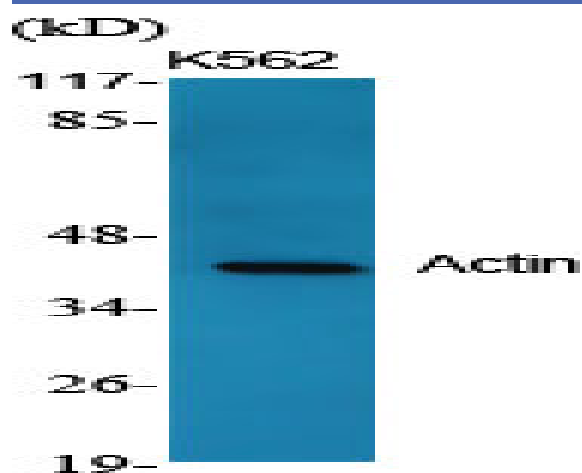
---

---

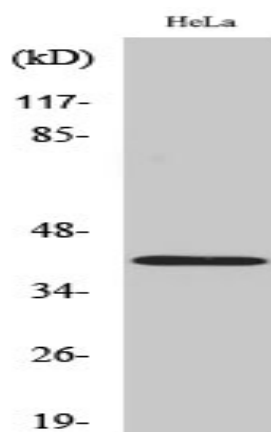
<b>Sort :</b>	1349
<b>No3 :</b>	ab179467
<b>No4 :</b>	1
<b>Host :</b>	Rabbit
<b>Modifications :</b>	Unmodified

---

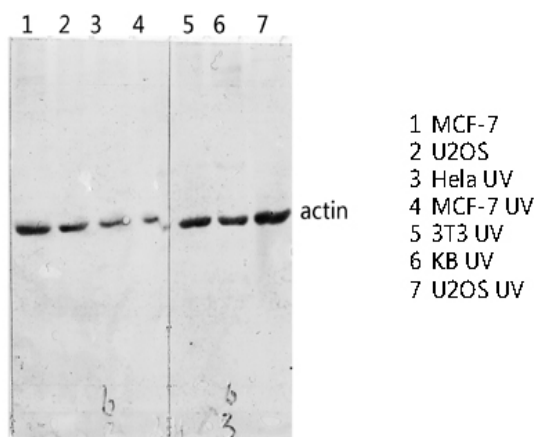
## Products Images



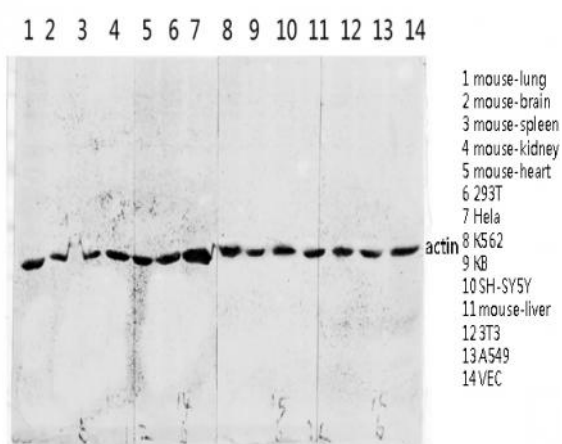
Western Blot analysis of various cells using Actin Polyclonal Antibody diluted at 1:2000



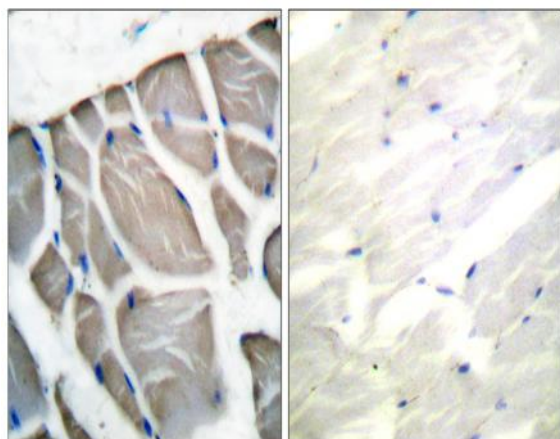
Western Blot analysis of HeLa cells using Actin Polyclonal Antibody diluted at 1:2000



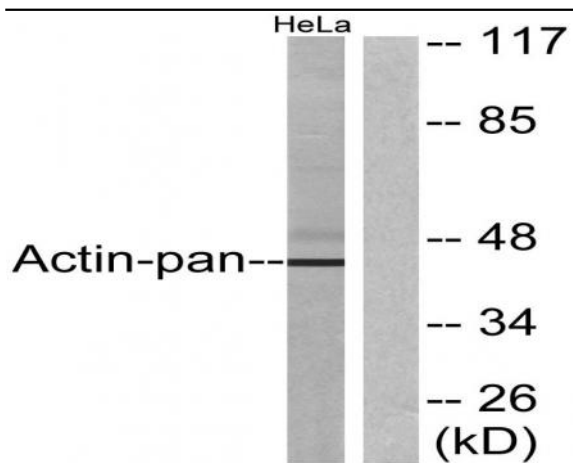
Western blot analysis of various lysis using Actin Polyclonal Antibody diluted at 1:2000. Secondary antibody(catalog#:RS0002) was diluted at 1:20000



Western blot analysis of various lysis using Actin Polyclonal Antibody diluted at 1:2000. Secondary antibody(catalog#:RS0002) was diluted at 1:20000



Immunohistochemistry analysis of paraffin-embedded human skeletal muscle tissue, using Actin-pan Antibody. The picture on the right is blocked with the synthesized peptide.



Western blot analysis of lysates from HeLa cells, using Actin-pan Antibody. The lane on the right is blocked with the synthesized peptide.