

ABHD7 Polyclonal Antibody

Catalog No :	YT0062
Reactivity :	Human;Mouse
Applications :	WB;ELISA
Target :	ABHD7
Fields :	>>Chemical carcinogenesis - receptor activation;>>Chemical carcinogenesis - reactive oxygen species
Gene Name :	EPHX4
Protein Name :	Epoxide hydrolase 4
Human Gene Id :	253152
Human Swiss Prot No :	Q8IUS5
Mouse Gene Id :	384214
Mouse Swiss Prot No :	Q6IE26
Immunogen :	The antiserum was produced against synthesized peptide derived from human ABHD7. AA range:101-150
Specificity :	ABHD7 Polyclonal Antibody detects endogenous levels of ABHD7 protein.
Formulation :	Liquid in PBS containing 50% glycerol, 0.5% BSA and 0.02% sodium azide.
Source :	Polyclonal, Rabbit,IgG
Dilution :	WB 1:500 - 1:2000. ELISA: 1:40000. Not yet tested in other applications.
Purification :	The antibody was affinity-purified from rabbit antiserum by affinity-chromatography using epitope-specific immunogen.
Concentration :	1 mg/ml

Storage Stability : -15°C to -25°C/1 year(Do not lower than -25°C)

Observed Band : 42kD

Background : The α/β hydrolase superfamily comprise diverse members that are involved in important biochemical processes and related to various diseases. They have unrelated sequences, various substrates, and different kinds of catalytic activities, yet they share the same canonical α/β hydrolase fold, which consists of an eight-stranded parallel α/β structure. They are also characterized by a catalytic triad composed of a histidine, an acid and a nucleophile. Members of this superfamily are often drug targets for treating diseases, such as diabetes, Alzheimer's disease, obesity and blood clotting disorders. The Ab hydrolase domain containing (ABHD) gene subfamily is comprised of 15 mostly uncharacterized members, most of which utilize a serine nucleophile to form the G-X-S-X-G nucleophile elbow. ABHD7 is a 362 amino acid single-pass type II membrane protein that belongs to the AB hydrolase superfamily and the Epoxide hydrolase family.

Subcellular Location : Membrane ; Single-pass type II membrane protein .

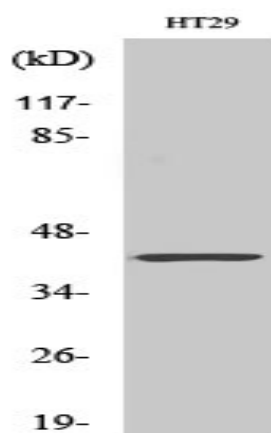
Sort : 1595

No4 : 1

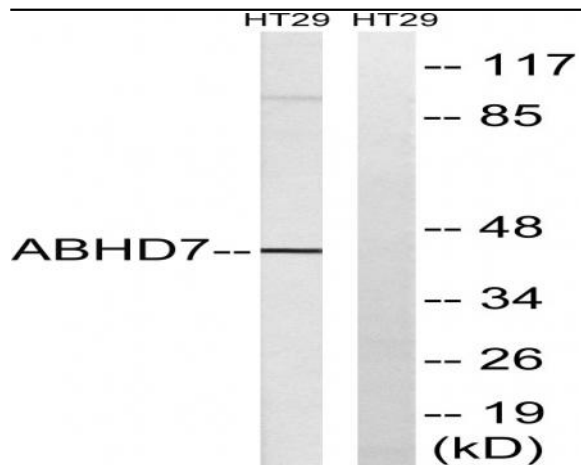
Host : Rabbit

Modifications : Unmodified

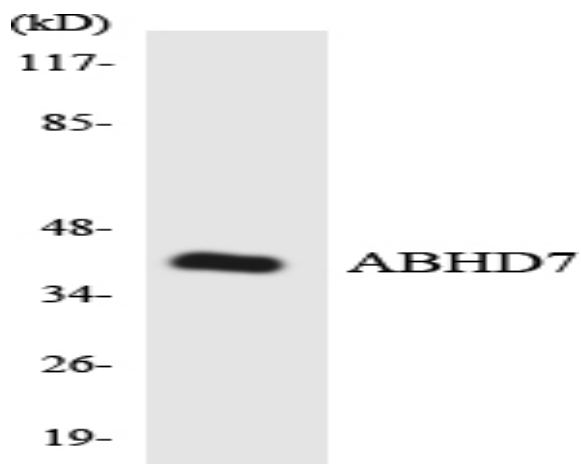
Products Images



Western Blot analysis of various cells using ABHD7 Polyclonal Antibody diluted at 1:500



Western blot analysis of lysates from HT-29 cells, using ABHD7 Antibody. The lane on the right is blocked with the synthesized peptide.



Western blot analysis of the lysates from HeLa cells using ABHD7 antibody.