

ABHD4 Polyclonal Antibody

| | |
|------------------------------|---|
| Catalog No : | YT0060 |
| Reactivity : | Human;Mouse |
| Applications : | IHC;IF;ELISA |
| Target : | ABHD4 |
| Gene Name : | ABHD4 |
| Protein Name : | Abhydrolase domain-containing protein 4 |
| Human Gene Id : | 63874 |
| Human Swiss Prot No : | Q8TB40 |
| Mouse Gene Id : | 105501 |
| Mouse Swiss Prot No : | Q8VD66 |
| Immunogen : | The antiserum was produced against synthesized peptide derived from human ABHD4. AA range:251-300 |
| Specificity : | ABHD4 Polyclonal Antibody detects endogenous levels of ABHD4 protein. |
| Formulation : | Liquid in PBS containing 50% glycerol, 0.5% BSA and 0.02% sodium azide. |
| Source : | Polyclonal, Rabbit,IgG |
| Dilution : | IHC 1:100 - 1:300. ELISA: 1:20000.. IF 1:50-200 |
| Purification : | The antibody was affinity-purified from rabbit antiserum by affinity-chromatography using epitope-specific immunogen. |
| Concentration : | 1 mg/ml |
| Storage Stability : | -15°C to -25°C/1 year(Do not lower than -25°C) |

Molecularweight : 39kD**Background :**

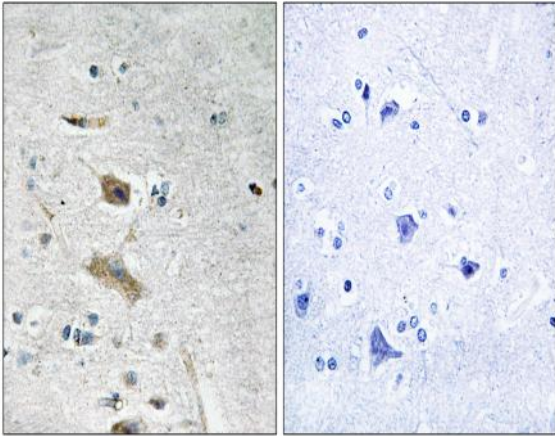
caution:Thr-291 is present instead of the conserved His which is expected to be an active site residue.,function:Lysophospholipase selective for N-acyl phosphatidylethanolamine (NAPE). Contributes to the biosynthesis of N-acyl ethanolamines, including the endocannabinoid anandamide by hydrolyzing the sn-1 and sn-2 acyl chains from N-acyl phosphatidylethanolamine (NAPE) generating glycerophospho-N-acyl ethanolamine (GP-NAE), an intermediate for N-acyl ethanolamine biosynthesis. Hydrolyzes substrates bearing saturated, monounsaturated, polyunsaturated N-acyl chains. Shows no significant activity towards other lysophospholipids, including lysophosphatidylcholine, lysophosphatidylethanolamine and lysophosphatidylserine.,similarity:Belongs to the peptidase S33 family. ABHD4/ABHD5 subfamily.,

Function :

caution:Thr-291 is present instead of the conserved His which is expected to be an active site residue.,function:Lysophospholipase selective for N-acyl phosphatidylethanolamine (NAPE). Contributes to the biosynthesis of N-acyl ethanolamines, including the endocannabinoid anandamide by hydrolyzing the sn-1 and sn-2 acyl chains from N-acyl phosphatidylethanolamine (NAPE) generating glycerophospho-N-acyl ethanolamine (GP-NAE), an intermediate for N-acyl ethanolamine biosynthesis. Hydrolyzes substrates bearing saturated, monounsaturated, polyunsaturated N-acyl chains. Shows no significant activity towards other lysophospholipids, including lysophosphatidylcholine, lysophosphatidylethanolamine and lysophosphatidylserine.,similarity:Belongs to the peptidase S33 family. ABHD4/ABHD5 subfamily.,

Subcellular Location : endoplasmic reticulum membrane,lipid particle,**Expression :** Cervix,**Sort :** 1593**No4 :** 1**Host :** Rabbit**Modifications :** Unmodified

Products Images



Immunohistochemistry analysis of paraffin-embedded human brain tissue, using ABHD4 Antibody. The picture on the right is blocked with the synthesized peptide.