

ABHD2 Polyclonal Antibody

Catalog No :	YT0059
Reactivity :	Human;Mouse
Applications :	WB;IF;ELISA
Target :	ABHD2
Gene Name :	ABHD2
Protein Name :	Abhydrolase domain-containing protein 2
Human Gene Id :	11057
Human Swiss Prot No :	P08910
Mouse Gene Id :	54608
Mouse Swiss Prot No :	Q9QXM0
Immunogen :	The antiserum was produced against synthesized peptide derived from human ABHD2. AA range:251-300
Specificity :	ABHD2 Polyclonal Antibody detects endogenous levels of ABHD2 protein.
Formulation :	Liquid in PBS containing 50% glycerol, 0.5% BSA and 0.02% sodium azide.
Source :	Polyclonal, Rabbit,IgG
Dilution :	WB 1:500 - 1:2000. IF 1:200 - 1:1000. ELISA: 1:40000. Not yet tested in other applications.
Purification :	The antibody was affinity-purified from rabbit antiserum by affinity-chromatography using epitope-specific immunogen.
Concentration :	1 mg/ml
Storage Stability :	-15°C to -25°C/1 year(Do not lower than -25°C)

Observed Band : 48kD

Background : This gene encodes a protein containing an alpha/beta hydrolase fold, which is a catalytic domain found in a very wide range of enzymes. The function of this protein has not been determined. Alternative splicing of this gene results in two transcript variants encoding the same protein. [provided by RefSeq, Jul 2008],

Function : caution:Was originally (PubMed:2843827) thought to be a G-coupled receptor.,function:May play a role in smooth muscle cells migration.,similarity:Belongs to the AB hydrolase superfamily. AB hydrolase 4 family.,

Subcellular Location : Cell projection, cilium, flagellum membrane ; Single-pass type II membrane protein . Cell membrane ; Single-pass type II membrane protein .

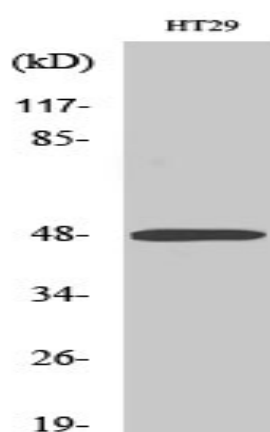
Expression : Present in sperm (at protein level).

Sort : 1592

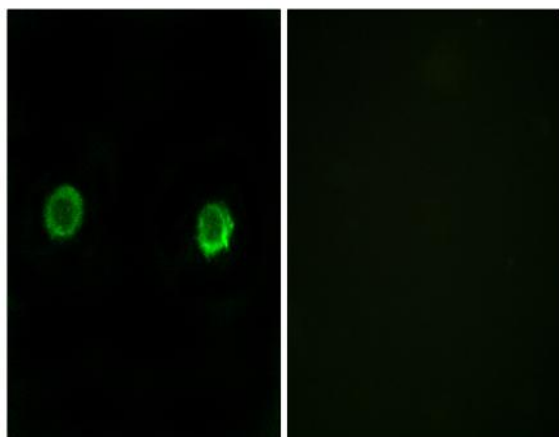
Host : Rabbit

Modifications : Unmodified

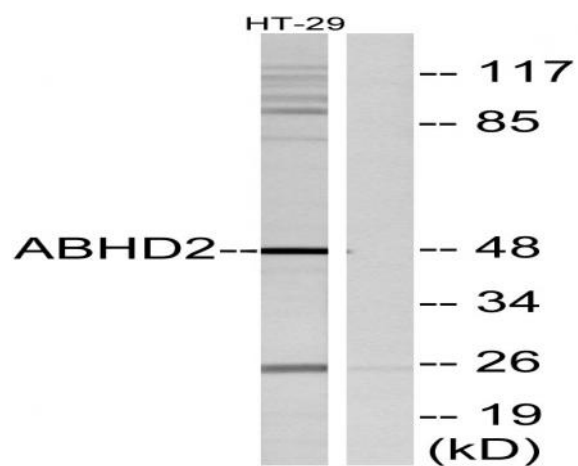
Products Images



Western Blot analysis of various cells using ABHD2 Polyclonal Antibody



Immunofluorescence analysis of MCF-7 cells, using ABHD2 Antibody. The picture on the right is blocked with the synthesized peptide.



Western blot analysis of lysates from HT29 cells, using ABHD2 Antibody. The lane on the right is blocked with the synthesized peptide.