

ABHD14B Polyclonal Antibody

Catalog No :	YT0058
Reactivity :	Human;Rat
Applications :	IHC;IF;ELISA
Target :	ABHD14B
Gene Name :	ABHD14B
Protein Name :	Abhydrolase domain-containing protein 14B
Human Gene Id :	84836
Human Swiss Prot No :	Q96IU4
Mouse Swiss Prot No :	Q8VCR7
Rat Gene Id :	300983
Rat Swiss Prot No :	Q6DGG1
Immunogen :	The antiserum was produced against synthesized peptide derived from human ABHD14B. AA range:161-210
Specificity :	ABHD14B Polyclonal Antibody detects endogenous levels of ABHD14B protein.
Formulation :	Liquid in PBS containing 50% glycerol, 0.5% BSA and 0.02% sodium azide.
Source :	Polyclonal, Rabbit,IgG
Dilution :	IHC 1:100 - 1:300. ELISA: 1:40000.. IF 1:50-200
Purification :	The antibody was affinity-purified from rabbit antiserum by affinity-chromatography using epitope-specific immunogen.
Concentration :	1 mg/ml

Storage Stability : -15°C to -25°C/1 year(Do not lower than -25°C)

Molecularweight : 22kD

Background : function:Has hydrolase activity towards p-nitrophenyl butyrate (in vitro). May activate transcription.,similarity:Belongs to the AB hydrolase superfamily. ABHD14 family.,subcellular location:Predominantly cytoplasmic.,subunit:May interact with TAF1.,tissue specificity:Ubiquitous. Detected in spleen, thymus, prostate, testis, ovary, small intestine, colon, peripheral blood leukocyte, heart, placenta, lung, liver, skeletal muscle, pancreas and kidney.,

Function : function:Has hydrolase activity towards p-nitrophenyl butyrate (in vitro). May activate transcription.,similarity:Belongs to the AB hydrolase superfamily. ABHD14 family.,subcellular location:Predominantly cytoplasmic.,subunit:May interact with TAF1.,tissue specificity:Ubiquitous. Detected in spleen, thymus, prostate, testis, ovary, small intestine, colon, peripheral blood leukocyte, heart, placenta, lung, liver, skeletal muscle, pancreas and kidney.,

Subcellular Location : Cytoplasm . Nucleus . Predominantly cytoplasmic. .

Expression : Ubiquitous (PubMed:14672934). Detected in spleen, thymus, prostate, testis, ovary, small intestine, colon, peripheral blood leukocyte, heart, placenta, lung, liver, skeletal muscle, pancreas and kidney (PubMed:14672934).

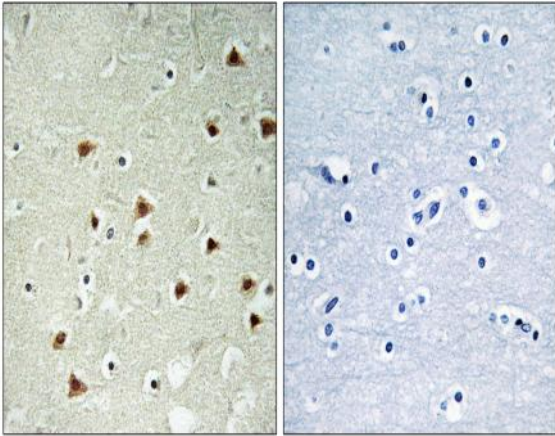
Sort : 1591

No4 : 1

Host : Rabbit

Modifications : Unmodified

Products Images



Immunohistochemistry analysis of paraffin-embedded human brain tissue, using ABHD14B Antibody. The picture on the right is blocked with the synthesized peptide.