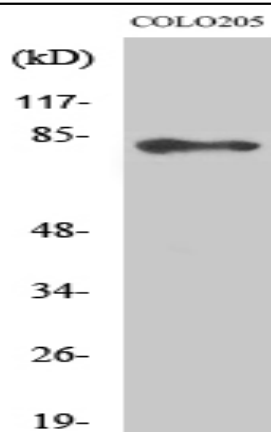


ABCB10 Polyclonal Antibody

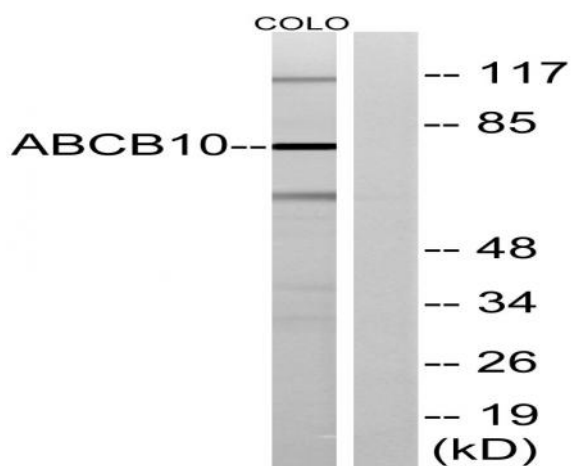
Catalog No :	YT0045
Reactivity :	Human;Mouse
Applications :	WB;IHC;IF;ELISA
Target :	ABCB10
Fields :	>>ABC transporters
Gene Name :	ABCB10
Protein Name :	ATP-binding cassette sub-family B member 10 mitochondrial
Human Gene Id :	23456
Human Swiss Prot No :	Q9NRK6
Mouse Swiss Prot No :	Q9JI39
Immunogen :	The antiserum was produced against synthesized peptide derived from human ABCB10. AA range:441-490
Specificity :	ABCB10 Polyclonal Antibody detects endogenous levels of ABCB10 protein.
Formulation :	Liquid in PBS containing 50% glycerol, 0.5% BSA and 0.02% sodium azide.
Source :	Polyclonal, Rabbit,IgG
Dilution :	WB 1:500 - 1:2000. IHC 1:100 - 1:300. IF 1:200 - 1:1000. ELISA: 1:40000. Not yet tested in other applications.
Purification :	The antibody was affinity-purified from rabbit antiserum by affinity-chromatography using epitope-specific immunogen.
Concentration :	1 mg/ml
Storage Stability :	-15°C to -25°C/1 year(Do not lower than -25°C)

Observed Band :	79kD
Cell Pathway :	ABC transporters;
Background :	<p>The membrane-associated protein encoded by this gene is a member of the superfamily of ATP-binding cassette (ABC) transporters. ABC proteins transport various molecules across extra- and intra-cellular membranes. ABC genes are divided into seven distinct subfamilies (ABC1, MDR/TAP, MRP, ALD, OABP, GCN20, White). This protein is a member of the MDR/TAP subfamily. Members of the MDR/TAP subfamily are involved in multidrug resistance. The function of this mitochondrial protein is unknown. [provided by RefSeq, Jul 2008],</p>
Function :	<p>function:May mediate critical mitochondrial transport functions related to heme biosynthesis.,similarity:Belongs to the ABC transporter family.,similarity:Belongs to the ABC transporter family. Mitochondrial peptide exporter (TC 3.A.1.212) subfamily.,similarity:Contains 1 ABC transmembrane type-1 domain.,similarity:Contains 1 ABC transporter domain.,subunit:Homodimer or heterodimer .,tissue specificity:Ubiquitous. Highly expressed in bone marrow, expressed at intermediate to high levels in skeletal muscle, small intestine, thyroid, heart, brain, placenta, liver, pancreas, prostate, testis, ovary, leukocyte, stomach, spinal cord, lymph node, trachea and adrenal gland, and low levels are found in lung, kidney, spleen, thymus and colon.,</p>
Subcellular Location :	Mitochondrion inner membrane ; Multi-pass membrane protein .
Expression :	Ubiquitous. Highly expressed in bone marrow, expressed at intermediate to high levels in skeletal muscle, small intestine, thyroid, heart, brain, placenta, liver, pancreas, prostate, testis, ovary, leukocyte, stomach, spinal cord, lymph node, trachea and adrenal gland, and low levels are found in lung, kidney, spleen, thymus and colon.
Sort :	1575
No4 :	1
Host :	Rabbit
Modifications :	Unmodified

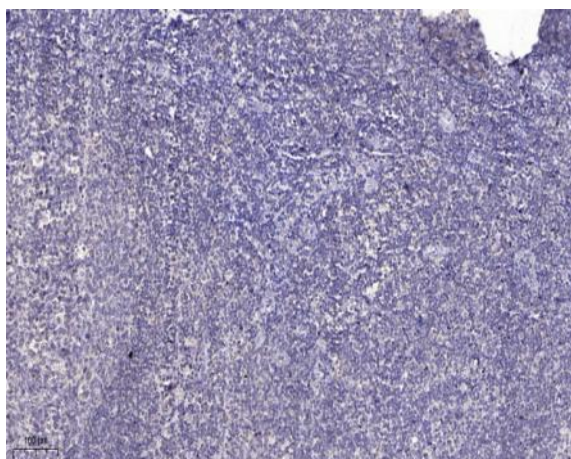
Products Images



Western Blot analysis of various cells using ABCB10 Polyclonal Antibody



Western blot analysis of lysates from COLO cells, using ABCB10 Antibody. The lane on the right is blocked with the synthesized peptide.



Immunohistochemical analysis of paraffin-embedded human tonsil. 1, Antibody was diluted at 1:200(4° overnight). 2, Tris-EDTA,pH9.0 was used for antigen retrieval. 3,Secondary antibody was diluted at 1:200(room temperature, 30min).