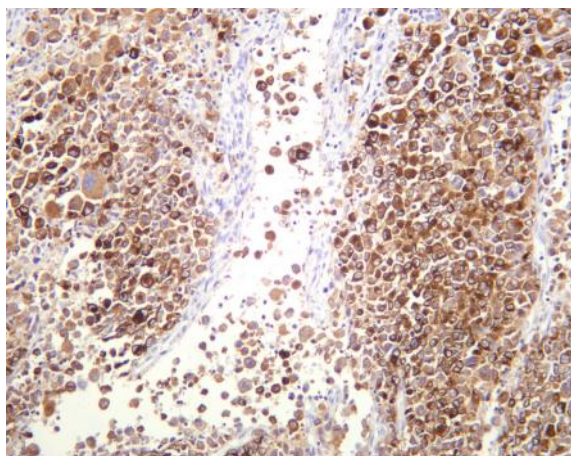


**MelanA (PT0408R) PT® Rabbit mAb**

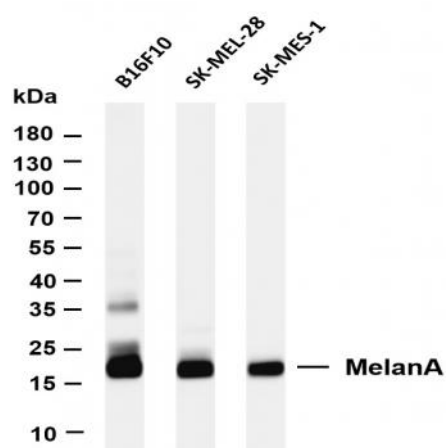
|                              |  |
|------------------------------|--|
| <b>Catalog No :</b>          | YM8252   |
| <b>Reactivity :</b>          | Human; Mouse;  |
| <b>Applications :</b>        | WB;IHC;IF;IP;ELISA   |
| <b>Target :</b>              | Melan-A  |
| <b>Gene Name :</b>           | MLANA MART1  |
| <b>Protein Name :</b>        | Mart-1/Melan-A   |
| <b>Human Gene Id :</b>       | 2315   |
| <b>Human Swiss Prot No :</b> | Q16655   |
| <b>Specificity :</b>         | endogenous   |
| <b>Formulation :</b>         | PBS, 50% glycerol, 0.05% Proclin 300, 0.05%BSA   |
| <b>Source :</b>              | Monoclonal, rabbit, IgG, Kappa   |
| <b>Dilution :</b>            | IHC 1:400-1:1000;WB 1:1000-1:5000;IF 1:200-1:1000;ELISA 1:5000-1:20000;IP 1:50-1:200;          |
| <b>Purification :</b>        | Protein A  |
| <b>Storage Stability :</b>   | -15°C to -25°C/1 year(Do not lower than -25°C)   |
| <b>Molecularweight :</b>     | 13kD   |
| <b>Observed Band :</b>       | 18kD   |
| <b>Background :</b>          | tissue specificity:Expression is restricted to melanoma and melanocyte cell lines and retina., |
| <b>Function :</b>            | tissue specificity:Expression is restricted to melanoma and melanocyte cell lines and retina., |

|                               |  |
|-------------------------------|--|
| <b>Subcellular Location :</b> | Endoplasmic reticulum membrane   |
| <b>Expression :</b>           | Expression is restricted to melanoma and melanocyte cell lines and retina. |
| <b>Tag :</b>                  | hot,recombinant  |
| <b>Sort :</b>                 | 9399   |
| <b>No4 :</b>                  | 1  |
| <b>Host :</b>                 | Rabbit   |
| <b>Modifications :</b>        | Unmodified   |

## Products Images



Human melanoma was stained with anti-MelanA (PT0408R) rabbit antibody



Various whole cell lysates were separated by 4-20% SDS-PAGE, and the membrane was blotted with anti-MelanA (PT0408R) antibody. The HRP-conjugated Goat anti-Rabbit IgG(H + L) antibody was used to detect the antibody. Lane 1: B16F10 Lane 2: SK-MEL-28 Lane 3: SK-MES-1 Predicted band size: 13kDa Observed band size: 18kDa