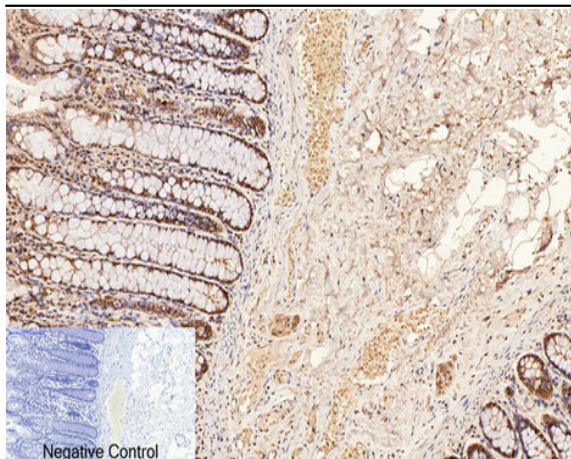


CD2 Monoclonal Antibody(3F3)

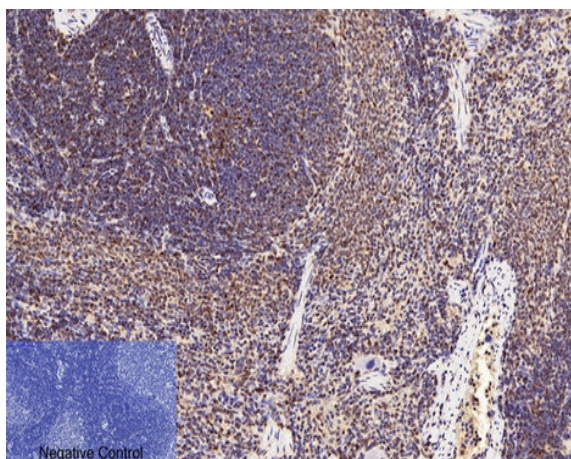
Catalog No :	YM3069
Reactivity :	Human;Mouse;Rat
Applications :	IHC;IF
Target :	CD2
Fields :	>>Cell adhesion molecules;>>Hematopoietic cell lineage
Gene Name :	CD2
Protein Name :	T-cell surface antigen CD2
Human Gene Id :	914
Human Swiss Prot No :	P06729
Mouse Gene Id :	12481
Mouse Swiss Prot No :	P08920
Rat Gene Id :	497761
Rat Swiss Prot No :	P08921
Immunogen :	Synthetic Peptide of CD2
Specificity :	The antibody detects endogenous CD2 proteins.
Formulation :	PBS, pH 7.4, containing 0.5%BSA, 0.02% sodium azide as Preservative and 50% Glycerol.
Source :	Monoclonal, Mouse
Dilution :	IHC 1:200. IF 1:50-200

Purification :	The antibody was affinity-purified from mouse ascites by affinity-chromatography using specific immunogen.
Storage Stability :	-15°C to -25°C/1 year(Do not lower than -25°C)
Molecularweight :	39kD
Cell Pathway :	Cell adhesion molecules (CAMs);Hematopoietic cell lineage;
Background :	The protein encoded by this gene is a surface antigen found on all peripheral blood T-cells. The encoded protein interacts with LFA3 (CD58) on antigen presenting cells to optimize immune recognition. A locus control region (LCR) has been found in the 3' flanking sequence of this gene. [provided by RefSeq, Jun 2016],
Function :	function:CD2 interacts with lymphocyte function-associated antigen (LFA-3) and CD48/BCM1 to mediate adhesion between T-cells and other cell types. CD2 is implicated in the triggering of T-cells, the cytoplasmic domain is implicated in the signaling function.,online information:CD2 entry,similarity:Contains 1 Ig-like C2-type (immunoglobulin-like) domain.,similarity:Contains 1 Ig-like V-type (immunoglobulin-like) domain.,subunit:Interacts with CD2AP (By similarity). Interacts with PSTPIP1.,
Subcellular Location :	Cell membrane ; Single-pass type I membrane protein .
Expression :	Expressed in natural killer cells (at protein level).
Sort :	43
No4 :	1
Host :	Mouse
Modifications :	Unmodified

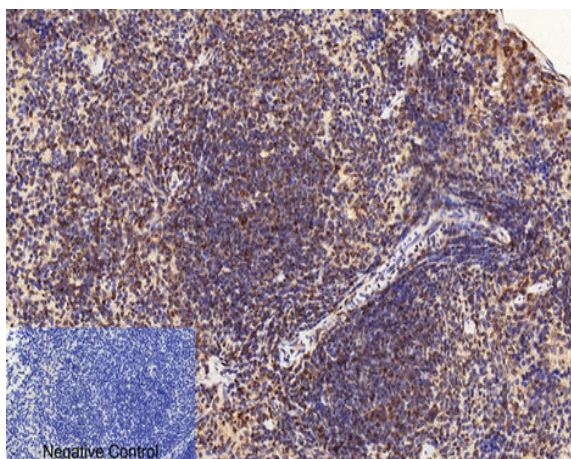
Products Images



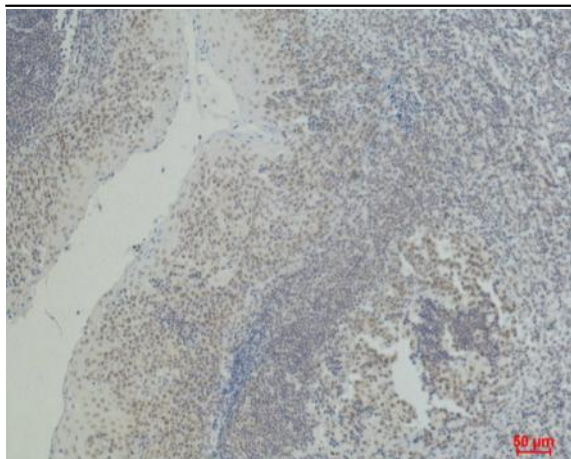
Immunohistochemical analysis of paraffin-embedded Human colon tissue. 1, CD2 Monoclonal Antibody(3F3) was diluted at 1:200(4 °C, overnight). 2, Sodium citrate pH 6.0 was used for antibody retrieval(>98 °C, 20min). 3, Secondary antibody was diluted at 1:200(room temperature, 30min). Negative control was used by secondary antibody only.



Immunohistochemical analysis of paraffin-embedded Rat-spleen tissue. 1, CD2 Monoclonal Antibody(3F3) was diluted at 1:200(4 °C, overnight). 2, Sodium citrate pH 6.0 was used for antibody retrieval(>98 °C, 20min). 3, Secondary antibody was diluted at 1:200(room temperature, 30min). Negative control was used by secondary antibody only.



Immunohistochemical analysis of paraffin-embedded Mouse-spleen tissue. 1, CD2 Monoclonal Antibody(3F3) was diluted at 1:200(4 °C, overnight). 2, Sodium citrate pH 6.0 was used for antibody retrieval(>98 °C, 20min). 3, Secondary antibody was diluted at 1:200(room temperature, 30min). Negative control was used by secondary antibody only.



Immunohistochemical analysis of paraffin-embedded Human Tonsil Carcinoma using CD2 Mouse mAb diluted at 1:500.