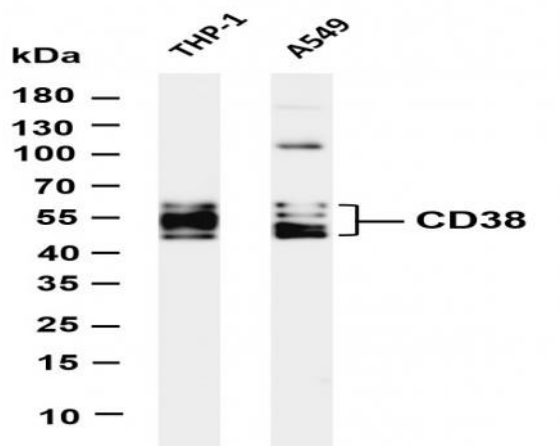


CD38 (PT0361R) PT® Rabbit mAb

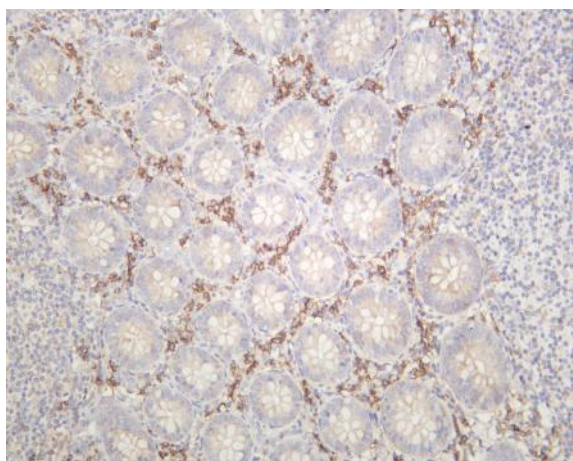
Catalog No :	YM8214
Reactivity :	Human;
Applications :	WB;IHC;IF;IP;ELISA
Target :	CD38
Fields :	>>Nicotinate and nicotinamide metabolism;>>Metabolic pathways;>>Calcium signaling pathway;>>Hematopoietic cell lineage;>>Oxytocin signaling pathway;>>Salivary secretion;>>Pancreatic secretion
Gene Name :	CD38
Protein Name :	ADP-ribosyl cyclase 1
Human Gene Id :	952
Human Swiss Prot No :	P28907
Mouse Swiss Prot No :	P56528
Specificity :	endogenous
Formulation :	PBS, 50% glycerol, 0.05% Proclin 300, 0.05%BSA
Source :	Monoclonal, rabbit, IgG, Kappa
Dilution :	IHC 1:10000-1:30000;WB 1:1000-1:5000;IF 1:200-1:1000;ELISA 1:5000-1:20000;IP 1:50-1:200;
Purification :	Protein A
Storage Stability :	-15°C to -25°C/1 year(Do not lower than -25°C)
Molecularweight :	34kD
Observed Band :	45-60kD

Cell Pathway :	<u>Nicotinate and nicotinamide metabolism;Calcium;Hematopoietic cell lineage;</u>
Background :	<u>The protein encoded by this gene is a non-lineage-restricted, type II transmembrane glycoprotein that synthesizes and hydrolyzes cyclic adenosine 5'-diphosphate-ribose, an intracellular calcium ion mobilizing messenger. The release of soluble protein and the ability of membrane-bound protein to become internalized indicate both extracellular and intracellular functions for the protein. This protein has an N-terminal cytoplasmic tail, a single membrane-spanning domain, and a C-terminal extracellular region with four N-glycosylation sites. Crystal structure analysis demonstrates that the functional molecule is a dimer, with the central portion containing the catalytic site. It is used as a prognostic marker for patients with chronic lymphocytic leukemia. Alternative splicing results in multiple transcript variants. [provided by RefSeq, Sep 2015],</u>
Function :	<u>catalytic activity:NAD(+) + H(2)O = ADP-ribose + nicotinamide.,developmental stage:Preferentially expressed at both early and late stages of the B and T-cell maturation. It is also detected on erythroid and myeloid progenitors in bone marrow, where the level of surface expression was shown to decrease during differentiation of blast-forming unit E to colony-forming unit E.,enzyme regulation:ATP inhibits the hydrolyzing activity.,function:Synthesizes cyclic ADP-ribose, a second messenger for glucose-induced insulin secretion. Also has cADPr hydrolase activity. Also moonlights as a receptor in cells of the immune system.,online information:CD38 entry,similarity:Belongs to the ADP-ribosyl cyclase family.,tissue specificity:Expressed at high levels in pancreas, liver, kidney, brain, testis, ovary, placenta, malignant lymphoma and neuroblastoma.,</u>
Subcellular Location :	<u>Membrane</u>
Expression :	<u>Expressed at high levels in pancreas, liver, kidney, brain, testis, ovary, placenta, malignant lymphoma and neuroblastoma.</u>
Tag :	<u>hot,recombinant</u>
Sort :	<u>422</u>
No4 :	<u>1</u>
Host :	<u>Rabbit</u>
Modifications :	<u>Unmodified</u>

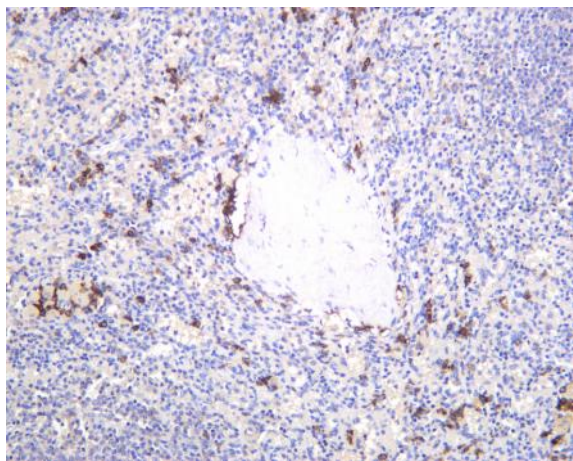
Products Images



Various whole cell lysates were separated by 4-20% SDS-PAGE, and the membrane was blotted with anti-CD38 (PT0361R) antibody. The HRP-conjugated Goat anti-Rabbit IgG(H + L) antibody was used to detect the antibody. Lane 1: THP-1 Lane 2: A549 Predicted band size: 34kDa Observed band size: 45-65kDa



Human appendix was stained with anti-CD38 (PT0361R) rabbit antibody



Human spleen was stained with anti-CD38 (PT0361R) rabbit antibody