

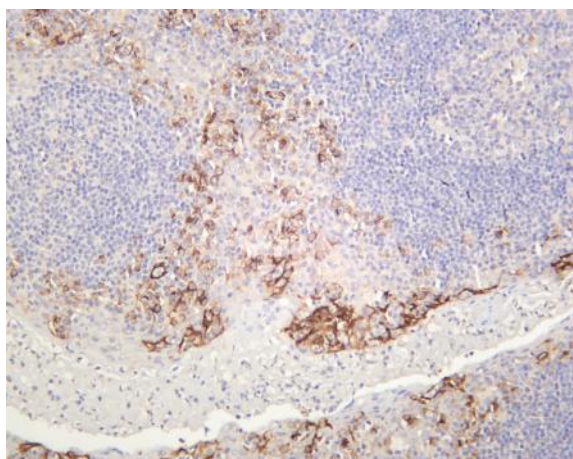
CD31 (PT0350R) PT® Rabbit mAb

Catalog No :	YM8207
Reactivity :	Human; Mouse; Rat;
Applications :	WB;IHC;IF;IP;ELISA
Target :	CD31
Fields :	>>Cell adhesion molecules;>>Leukocyte transendothelial migration;>>Malaria;>>Fluid shear stress and atherosclerosis
Gene Name :	PECAM1
Protein Name :	Platelet endothelial cell adhesion molecule (PECAM-1) (EndoCAM) (GPIIA') (PECA1) (CD antigen CD31)
Human Gene Id :	5175
Human Swiss Prot No :	P16284
Mouse Gene Id :	18613
Mouse Swiss Prot No :	Q08481
Rat Gene Id :	29583
Rat Swiss Prot No :	Q3SWT0
Specificity :	endogenous
Formulation :	PBS, 50% glycerol, 0.05% Proclin 300, 0.05%BSA
Source :	Monoclonal, rabbit, IgG, Kappa
Dilution :	IHC 1:1000-1:2000;WB 1:1000-1:5000;IF 1:200-1:1000;ELISA 1:5000-1:20000;IP 1:50-1:200;
Purification :	Protein A

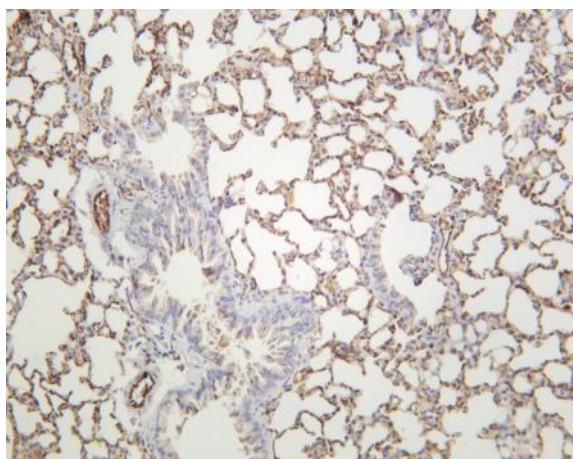
Storage Stability :	-15°C to -25°C/1 year(Do not lower than -25°C)
Molecularweight :	81kD
Observed Band :	130kD
Background :	platelet and endothelial cell adhesion molecule 1(PECAM1) Homo sapiens The protein encoded by this gene is found on the surface of platelets, monocytes, neutrophils, and some types of T-cells, and makes up a large portion of endothelial cell intercellular junctions. The encoded protein is a member of the immunoglobulin superfamily and is likely involved in leukocyte migration, angiogenesis, and integrin activation. [provided by RefSeq, May 2010],
Function :	function:This protein is a cell adhesion molecule expressed on platelets and at endothelial cell intercellular junctions.,online information:CD31 entry,online information:PECAM-1,online information:The Singapore human mutation and polymorphism database,PTM:Phosphorylated on Ser and Tyr residues after cellular activation.,similarity:Contains 6 Ig-like C2-type (immunoglobulin-like) domains.,tissue specificity:Long isoform predominates all tissues examined, isoform Delta12 was detected only in trachea and isoform Delta14-15 only in lung, isoform Delta14 was detected in all tissues examined with the strongest expression in heart.,
Subcellular Location :	Membrane
Expression :	Expressed on platelets and leukocytes and is primarily concentrated at the borders between endothelial cells (PubMed:18388311, PubMed:21464369). Expressed in human umbilical vein endothelial cells (HUVECs) (at protein level) (PubMed:19342684, PubMed:17580308). Expressed on neutrophils (at protein level) (PubMed:17580308). Isoform Long predominates in all tissues examined (PubMed:12433657). Isoform Delta12 is detected only in trachea (PubMed:12433657). Isoform Delta14-15 is only detected in lung (PubMed:12433657). Isoform Delta14 is detected in all tissues examined with the strongest expression in heart (PubMed:12433657). Isoform Delta15 is expressed in brain, testis, ovary, cell surface of platelets, human umbilical vein endothelial cells (HUVECs), Jurkat T-cell leukemia, human erythroleuk
Tag :	hot,recombinant
Sort :	999
No4 :	1
Host :	Rabbit
Modifications :	Unmodified

Products Images

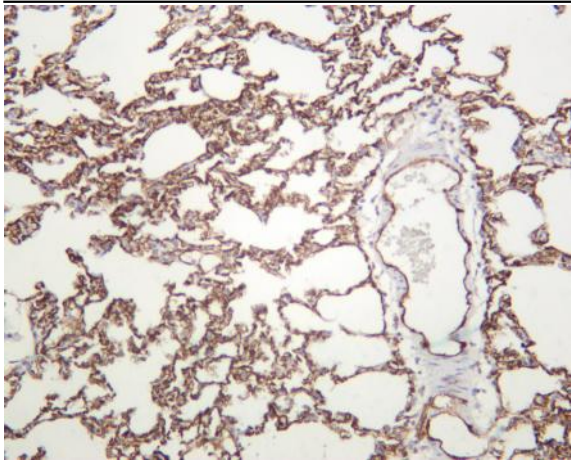
Various whole cell lysates were separated by 4-20% SDS-PAGE, and the membrane was blotted with anti-CD31 (PT0350R) antibody. The HRP-conjugated Goat anti-Rabbit IgG(H + L) antibody was used to detect the antibody. Lane 1: THP-1 Lane 2: Rat spleen Predicted band size: 81kDa Observed band size: 130kDa



Human tonsil was stained with anti-CD31 (PT0350R) rabbit antibody



Mouse lung was stained with anti-CD31 (PT0350R) rabbit antibody



Rat lung was stained with anti-CD31 (PT0350R) rabbit antibody