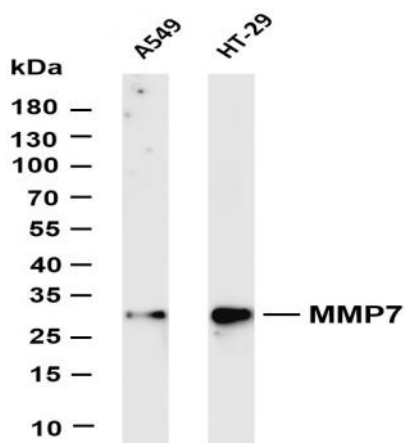


MMP7 (PT0538R) PT® Rabbit mAb

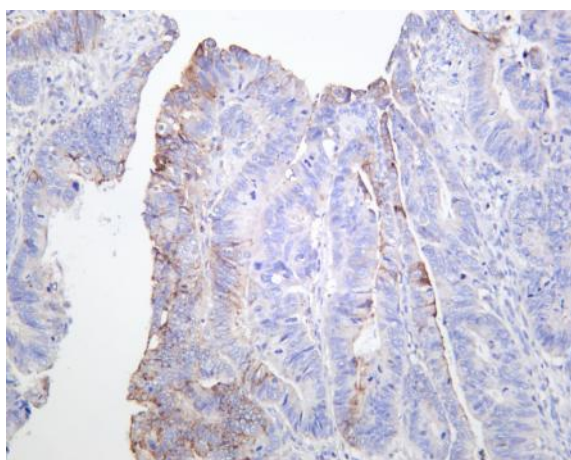
Catalog No :	YM8359
Reactivity :	Human;
Applications :	WB;IHC;IF;IP;ELISA
Target :	MMP-7
Fields :	>>Wnt signaling pathway;>>Human T-cell leukemia virus 1 infection
Gene Name :	MMP7
Protein Name :	Matrilysin
Human Gene Id :	4316
Human Swiss Prot No :	P09237
Mouse Swiss Prot No :	Q10738
Rat Gene Id :	25335
Rat Swiss Prot No :	P50280
Specificity :	endogenous
Formulation :	PBS, 50% glycerol, 0.05% Proclin 300, 0.05%BSA
Source :	Monoclonal, rabbit, IgG, Kappa
Dilution :	IHC 1:200-1:1000;WB 1:2000-1:10000;IF 1:200-1:1000;ELISA 1:5000-1:20000;IP 1:50-1:200;
Purification :	Protein A
Storage Stability :	-15°C to -25°C/1 year(Do not lower than -25°C)

Molecularweight :	30kD
Observed Band :	30kD
Cell Pathway :	WNT;WNT-T CELL
Background :	<p>matrix metalloproteinase 7(MMP7) Homo sapiens This gene encodes a member of the peptidase M10 family of matrix metalloproteinases (MMPs). Proteins in this family are involved in the breakdown of extracellular matrix in normal physiological processes, such as embryonic development, reproduction, and tissue remodeling, as well as in disease processes, such as arthritis and metastasis. The encoded preproprotein is proteolytically processed to generate the mature protease. This secreted protease breaks down proteoglycans, fibronectin, elastin and casein and differs from most MMP family members in that it lacks a conserved C-terminal hemopexin domain. The enzyme is involved in wound healing, and studies in mice suggest that it regulates the activity of defensins in intestinal mucosa. The gene is part of a cluster of MMP genes on chromosome 11. This gene exhibits elevated expression levels in multiple human cancers. [provided by RefSeq, Jan 2016],</p>
Function :	<p>catalytic activity: Cleavage of 14-Ala- -Leu-15 and 16-Tyr- -Leu-17 in B chain of insulin. No action on collagen types I, II, IV, V. Cleaves gelatin chain alpha-2(I) > alpha-1(I)., cofactor: Binds 2 calcium ions per subunit., cofactor: Binds 2 zinc ions per subunit., domain: The conserved cysteine present in the cysteine-switch motif binds the catalytic zinc ion, thus inhibiting the enzyme. The dissociation of the cysteine from the zinc ion upon the activation-peptide release activates the enzyme., function: Degrades casein, gelatins of types I, III, IV, and V, and fibronectin. Activates procollagenase., similarity: Belongs to the peptidase M10A family.,</p>
Subcellular Location :	Secreted
Expression :	Colon, Human small intestine, Kidney, Placenta,
Tag :	hot, recombinant
Sort :	1
No4 :	1
Host :	Rabbit
Modifications :	Unmodified

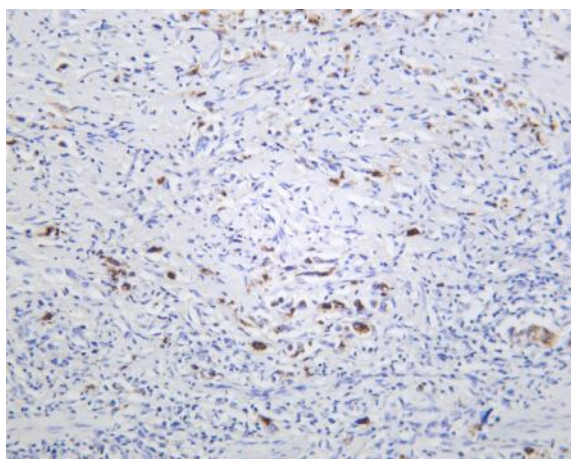
Products Images



Various whole cell lysates were separated by 4-20% SDS-PAGE, and the membrane was blotted with anti-MMP7 (PT0538R) antibody. The HRP-conjugated Goat anti-Rabbit IgG(H + L) antibody was used to detect the antibody. Lane 1: A549 Lane 2: HT-29 Predicted band size: 30kDa Observed band size: 30kDa



Human colon carcinoma was stained with anti-MMP7 (PT0538R) rabbit antibody



Human stomach carcinoma was stained with anti-MMP7 (PT0538R) rabbit antibody