

**Calponin-1 (ABT145R) rabbit mAb (Ready to Use)**

<b>Catalog No :</b>	YM7250R
<b>Reactivity :</b>	Human;
<b>Applications :</b>	IHC
<b>Target :</b>	Calponin-1
<b>Gene Name :</b>	CNN1
<b>Protein Name :</b>	Calponin-1
<b>Human Gene Id :</b>	1264
<b>Human Swiss Prot No :</b>	P51911
<b>Immunogen :</b>	Synthesized peptide derived from human Calponin-1 AA range:100-200
<b>Specificity :</b>	This antibody detects endogenous levels of Calponin-1
<b>Formulation :</b>	The prediluted ready-to-use antibody is diluted in phosphate buffer saline containing stabilizing protein and 0.05% Proclin 300
<b>Source :</b>	Monoclonal, Rabbit IgG1, Kappa
<b>Dilution :</b>	Ready to use for IHC
<b>Purification :</b>	Recombinant Expression and Affinity purified
<b>Storage Stability :</b>	2°C to 8°C/1 year
<b>Function :</b>	function:Thin filament-associated protein that is implicated in the regulation and modulation of smooth muscle contraction. It is capable of binding to actin, calmodulin, troponin C and tropomyosin. The interaction of calponin with actin inhibits the actomyosin Mg-ATPase activity.,similarity:Belongs to the calponin family.,similarity:Contains 1 CH (calponin-homology) domain.,similarity:Contains 3 calponin-like repeats.,subunit:Part of cGMP kinase signaling complex at least composed of ACTA2/alpha-actin, CNN1/calponin H1, PLN/phospholamban, PRKG1 and ITPR1.,tissue specificity:Smooth muscle, and tissues containing

---

significant amounts of smooth muscle.,

---

**Subcellular Location :**

Cytoplasmic

---

**Expression :**

Smooth muscle, and tissues containing significant amounts of smooth muscle.

---

**Tag :**

hot,recombinant

---

**Sort :**

25038

---

**No4 :**

1

---

**Host :**

Rabbit

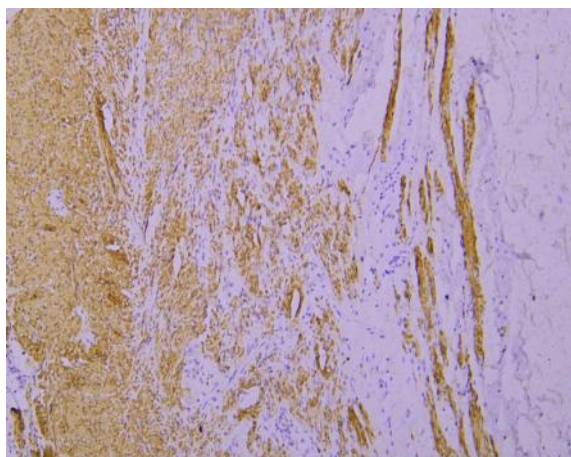
---

**Modifications :**

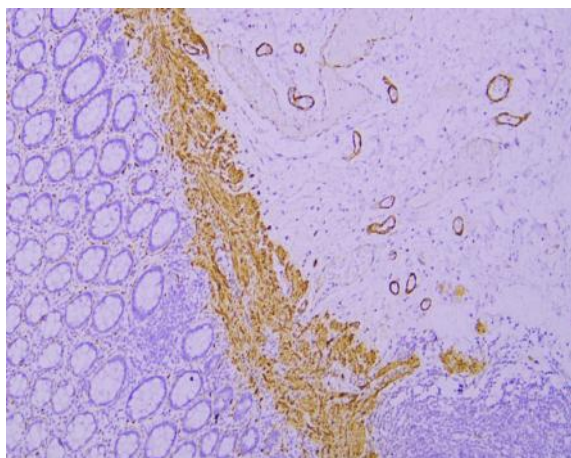
Unmodified

---

## Products Images



Immunohistochemical analysis of paraffin-embedded human Appendix. 1, Antibody was incubated at 4° overnight. 2, Citrate buffer of pH6.0 was used for antigen retrieval. 3,Secondary antibody was diluted at 1:200(room temperature, 30min).



Immunohistochemical analysis of paraffin-embedded human Colon. 1, Antibody was incubated at 4° overnight. 2, Citrate buffer of pH6.0 was used for antigen retrieval. 3,Secondary antibody was diluted at 1:200(room temperature, 30min).