

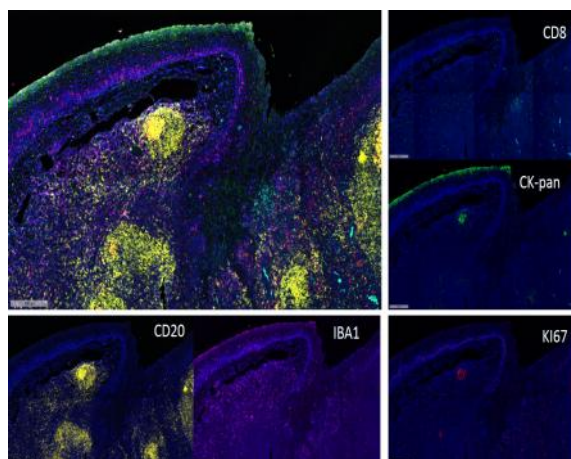
Ki-67 Rabbit mAb(ABT104R) (Ready to Use)

Catalog No :	YM7002R
Reactivity :	Human
Applications :	IHC
Target :	Ki-67
Gene Name :	MKI67
Protein Name :	Ki 67
Human Gene Id :	4288
Human Swiss Prot No :	P46013
Immunogen :	Synthesized peptide derived from human Ki-67
Specificity :	The antibody can specifically recognize human Ki-67 protein.
Formulation :	Liquid in PBS containing 50% glycerol, 0.05% proclin 300
Source :	Monoclonal, Rabbit,IgG
Dilution :	Ready to use for IHC
Purification :	Recombinant Expression and Affinity purified
Storage Stability :	2°C to 8°C/1 year
Background :	This gene encodes a nuclear protein that is associated with and may be necessary for cellular proliferation. Alternatively spliced transcript variants have been described. A related pseudogene exists on chromosome X. [provided by RefSeq, Mar 2009],
Function :	developmental stage:Expression of this antigen occurs preferentially during late G1, S, G2 and M phases of the cell cycle, while in cells in G0 phase the antigen cannot be detected.,function:Thought to be required for maintaining cell

proliferation.,online information:Ki-67 entry,similarity:Contains 1 FHA domain.,subcellular location:Predominantly localized in the G1 phase in the perinucleolar region, in the later phases it is also detected throughout the nuclear interior, being predominantly localized in the nuclear matrix. In mitosis, it is present on all chromosomes.,subunit:Interacts with KIF15. Binds through the FHA domain to MKI67IP.,

Subcellular Location :	Nuclear
Expression :	Nuclear
Tag :	hot,recombinant
Sort :	800
No4 :	1
Speciality :	IHC antibodies
Host :	Rabbit
Modifications :	Unmodified

Products Images



Fluorescence multiplex immunohistochemical analysis of Human tonsil tissue (formalin-fixed paraffin-embedded section). The immunostaining was performed by Pentuple-Fluorescence kit (RS0038, Immunoway). CK-pan mouse mAb(YM6815 Immunoway) green, Ki-67 rabbit mAb(YM7002 Immunoway) red, Iba 1 mouse mAb(YM4765 Immunoway) purple,CD8 a mouse mAb(YM4815 Immunoway) cyan, CD20 mouse mAb(YM4814 Immunoway) yellow, The section was incubated in 5 rounds of staining; sequentially for Anti-antibodies; each using a separate fluorescent tyramide signal amplification system. EDTA based antigen retrieval (Immunoway YS0004, pH 9.0, 20 minutes) was used in between rounds of tyramide signal amplification to remove the antibody from the previous round, to avoid any cross-reactivity. DAPI (dark blue) was used as a nuclear counter stain. Microscopy and pseudocoloring of individual dyes was performed using a Slideviewer Imaging System (Excilone).