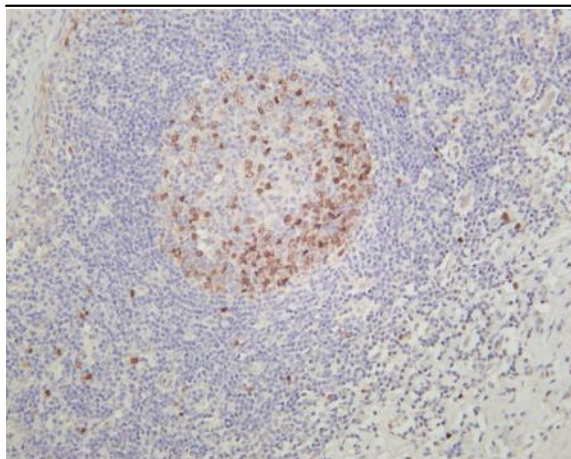


Aurora B (PT0246R) PT® Rabbit mAb

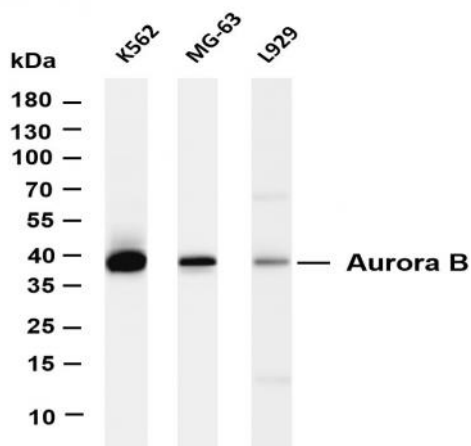
Catalog No :	YM8155
Reactivity :	Human;
Applications :	WB;IHC;IF;IP;ELISA
Target :	ARK-2
Gene Name :	AURKB
Protein Name :	Aurora kinase B,Aurora B
Human Gene Id :	9212
Human Swiss Prot No :	Q96GD4
Mouse Gene Id :	20877
Mouse Swiss Prot No :	O70126
Rat Gene Id :	114592
Rat Swiss Prot No :	O55099
Specificity :	endogenous
Formulation :	PBS, 50% glycerol, 0.05% Proclin 300, 0.05%BSA
Source :	Monoclonal, rabbit, IgG, Kappa
Dilution :	IHC 1:500-1:1000;WB 1:1000-1:5000;IF 1:200-1:1000;ELISA 1:5000-1:20000;IP 1:50-1:200;
Purification :	Protein A
Storage Stability :	-15°C to -25°C/1 year(Do not lower than -25°C)

Molecularweight :	39kD
Observed Band :	39kD
Background :	<p>This gene encodes a member of the aurora kinase subfamily of serine/threonine kinases. The genes encoding the other two members of this subfamily are located on chromosomes 19 and 20. These kinases participate in the regulation of alignment and segregation of chromosomes during mitosis and meiosis through association with microtubules. A pseudogene of this gene is located on chromosome 8. Alternatively spliced transcript variants have been found for this gene. [provided by RefSeq, Sep 2015],</p>
Function :	<p>catalytic activity:ATP + a protein = ADP + a phosphoprotein.,cofactor:Magnesium.,disease:Disruptive regulation of expression is a possible mechanism of the perturbation of chromosomal integrity in cancer cells through its dominant-negative effect on cytokinesis.,function:May be directly involved in regulating the cleavage of polar spindle microtubules and is a key regulator for the onset of cytokinesis during mitosis. Component of the chromosomal passenger complex (CPC), a complex that acts as a key regulator of mitosis. The CPC complex has essential functions at the centromere in ensuring correct chromosome alignment and segregation and is required for chromatin-induced microtubule stabilization and spindle assembly. Phosphorylates 'Ser-10' and 'Ser-28' of histone H3 during mitosis.,similarity:Belongs to the protein kinase superfamily. Ser/Thr protein kinase family. Aurora subfamily.,s</p>
Subcellular Location :	Nucleus
Expression :	<p>High level expression seen in the thymus. It is also expressed in the spleen, lung, testis, colon, placenta and fetal liver. Expressed during S and G2/M phase and expression is up-regulated in cancer cells during M phase. ; [Isoform 3]: Not expressed in normal liver, high expression in metastatic liver.</p>
Tag :	hot,recombinant
Sort :	2256
No4 :	1
Host :	Rabbit
Modifications :	Unmodified

[Products Images](#)



Human tonsil was stained with anti-Aurora B (PT0246R) rabbit antibody



Various whole cell lysates were separated by 4-20% SDS-PAGE, and the membrane was blotted with anti-Aurora B (PT0246R) antibody. The HRP-conjugated Goat anti-Rabbit IgG(H + L) antibody was used to detect the antibody. Lane 1: K562 Lane 2: MG-63 Lane 3: L929 Predicted band size: 39kDa Observed band size: 39kDa