

**GSK3  $\alpha/\beta$  (PT0413R) PT<sup>®</sup> Rabbit mAb**

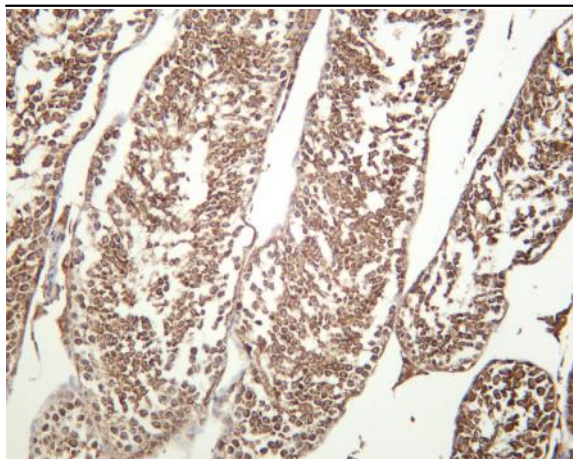
<b>Catalog No :</b>	YM8255
<b>Reactivity :</b>	Human; Mouse; Rat;
<b>Applications :</b>	WB;IHC;IF;IP;ELISA
<b>Target :</b>	GSK3 $\alpha/\beta$
<b>Fields :</b>	>>Chemokine signaling pathway;>>Dopaminergic synapse;>>Non-alcoholic fatty liver disease;>>Shigellosis
<b>Gene Name :</b>	GSK3A/GSK3B
<b>Protein Name :</b>	Glycogen synthase kinase-3 alpha/beta
<b>Human Gene Id :</b>	2931
<b>Human Swiss Prot No :</b>	P49840, P49841
<b>Mouse Gene Id :</b>	606496/56637
<b>Rat Gene Id :</b>	50686/84027
<b>Rat Swiss Prot No :</b>	P18265/P18266
<b>Specificity :</b>	endogenous
<b>Formulation :</b>	PBS, 50% glycerol, 0.05% Proclin 300, 0.05%BSA
<b>Source :</b>	Monoclonal, rabbit, IgG, Kappa
<b>Dilution :</b>	IHC 1:400-1:800;WB 1:2000-1:10000;IF 1:200-1:1000;ELISA 1:5000-1:20000;IP 1:50-1:200;
<b>Purification :</b>	Protein A
<b>Storage Stability :</b>	-15°C to -25°C/1 year(Do not lower than -25°C)

---

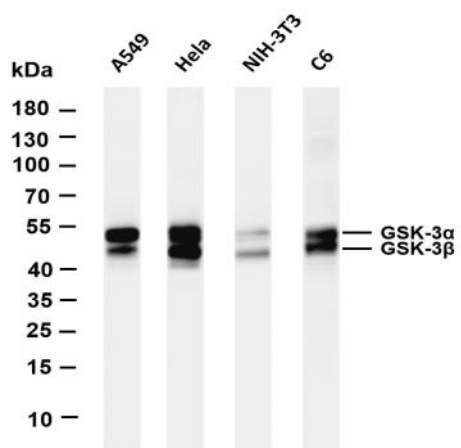
<b>Molecularweight :</b>	51,47kD
<b>Observed Band :</b>	51,47kD
<b>Cell Pathway :</b>	Chemokine;
<b>Background :</b>	glycogen synthase kinase 3 alpha(GSK3A) Homo sapiens This gene encodes a multifunctional Ser/Thr protein kinase that is implicated in the control of several regulatory proteins including glycogen synthase, and transcription factors, such as JUN. It also plays a role in the WNT and PI3K signaling pathways, as well as regulates the production of beta-amyloid peptides associated with Alzheimer&apos;s disease. [provided by RefSeq, Oct 2011],
<b>Function :</b>	catalytic activity:ATP + [tau protein] = ADP + [tau protein] phosphate.,function:Implicated in the hormonal control of several regulatory proteins including glycogen synthase, MYB and the transcription factor JUN.,similarity:Belongs to the protein kinase superfamily.,similarity:Belongs to the protein kinase superfamily. CMGC Ser/Thr protein kinase family. GSK-3 subfamily.,similarity:Contains 1 protein kinase domain.,subunit:Monomer.,
<b>Subcellular Location :</b>	Cytoplasm
<b>Expression :</b>	Brain,Eye,Foreskin,Lung,Pancreas,Platelet,Testis,
<b>Tag :</b>	hot,recombinant
<b>Sort :</b>	7166
<b>No4 :</b>	1
<b>Host :</b>	Rabbit
<b>Modifications :</b>	Unmodified

---

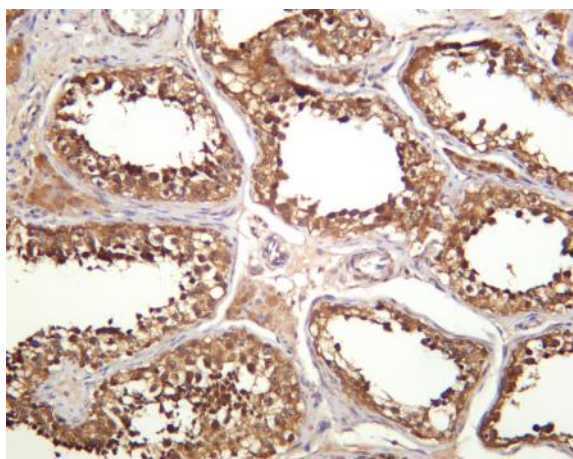
## Products Images



Mouse testis was stained with anti-GSK3  $\alpha/\beta$  (PT0413R) rabbit antibody



Various whole cell lysates were separated by 4-20% SDS-PAGE, and the membrane was blotted with anti-GSK3  $\alpha/\beta$  (PT0413R) antibody. The HRP-conjugated Goat anti-Rabbit IgG(H + L) antibody was used to detect the antibody. Lane 1: A549 Lane 2: HeLa Lane 3: NIH-3T3 Lane 4: C6 Predicted band size: 51,47kDa Observed band size: 51,47kDa



Human testis was stained with anti-GSK3  $\alpha/\beta$  (PT0413R) rabbit antibody