

PAX2 (PTR1301) mouse mAb

Catalog No :	YM4710
Reactivity :	Human;
Applications :	IHC;IF;ELISA
Target :	PAX2
Gene Name :	PAX2
Protein Name :	Paired box protein Pax-2
Human Gene Id :	5076
Human Swiss Prot No :	Q02962
Mouse Gene Id :	18504
Mouse Swiss Prot No :	P32114
Immunogen :	Synthesized peptide derived from human PAX2. AA range: 150-250
Specificity :	This antibody detects endogenous levels of PAX2 protein.
Formulation :	PBS, 50% glycerol, 0.05% Proclin 300, 0.05%BSA
Source :	Mouse, Monoclonal/IgG1, kappa
Dilution :	IHC 1:200-1000. IF 1:100-500. ELISA 1:1000-5000
Purification :	Protein G
Concentration :	1 mg/ml
Storage Stability :	-15°C to -25°C/1 year(Do not lower than -25°C)
Molecularweight :	45kD

Background : paired box 2(PAX2) Homo sapiens PAX2 encodes paired box gene 2, one of many human homologues of the Drosophila melanogaster gene prd. The central feature of this transcription factor gene family is the conserved DNA-binding paired box domain. PAX2 is believed to be a target of transcriptional suppression by the tumor suppressor gene WT1. Mutations within PAX2 have been shown to result in optic nerve colobomas and renal hypoplasia. Alternative splicing of this gene results in multiple transcript variants. [provided by RefSeq, Dec 2014],

Function : Transcription factor that may have a role in kidney cell differentiation . Has a critical role in the development of the urogenital tract, the eyes, and the CNS.

Subcellular Location : Nuclear

Expression : Expressed in primitive cells of the kidney, ureter, eye, ear and central nervous system.

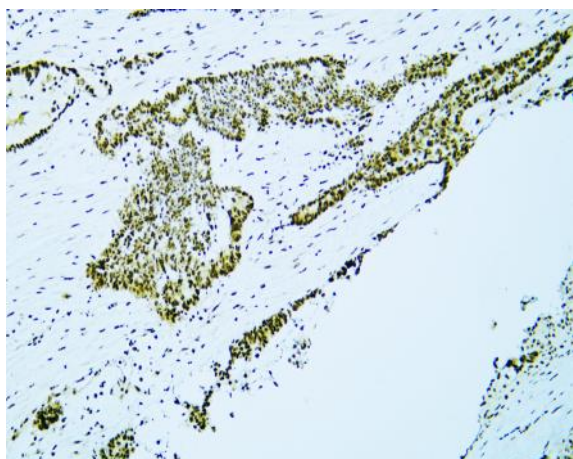
Sort : 1

No4 : 1

Host : Mouse

Modifications : Unmodified

Products Images



Human ovarian serous carcinoma tissue was stained with Anti-PAX2 (PTR1301) Antibody