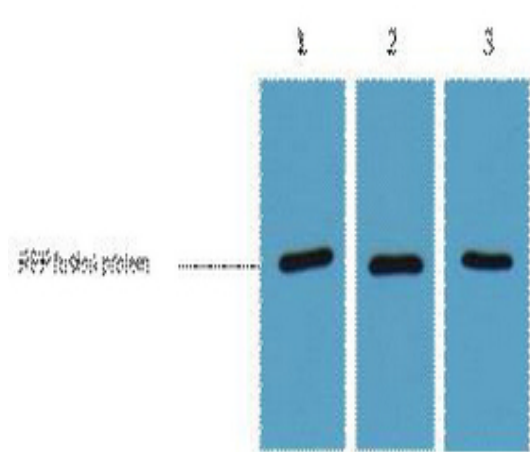


## RFP-Tag Monoclonal Antibody(5G4)

<b>Catalog No :</b>	YM3011
<b>Reactivity :</b>	Species independent
<b>Applications :</b>	WB;IF;
<b>Target :</b>	RFP-Tag
<b>Immunogen :</b>	Recombinant Protein of RFP-Tag
<b>Specificity :</b>	The antibody detects RFP ERFP tag fusion proteins. It isn't reactive against GFP CFP YFP. It is reactive against morange tag weakly.
<b>Formulation :</b>	PBS, pH 7.4, containing 0.5%BSA, 0.02% sodium azide as Preservative and 50% Glycerol.
<b>Source :</b>	Monoclonal, Mouse
<b>Dilution :</b>	WB 1:10000-20000,IF 1:200-2000
<b>Purification :</b>	The antibody was affinity-purified from mouse ascites by affinity-chromatography using specific immunogen.
<b>Storage Stability :</b>	-15°C to -25°C/1 year(Do not lower than -25°C)
<b>Background :</b>	RFP (Red Fluorescent Protein), cloned from Discosoma coral (DsRed, DsRed2 or drFP583), is a protein which exhibits bright red fluorescence when exposed to blue light. It is common research practice for biologists to introduce a gene (or a gene chimera) encoding an engineered fluorescent protein into living cells and subsequently visualize the location and dynamics of the gene product using fluorescence microscopy.
<b>Tag :</b>	hot,overexpression
<b>Sort :</b>	1318
<b>No3 :</b>	ab185921
	Mouse

**Modifications :** Unmodified

## Products Images



1ug RFP fusion protein+ Primary antibody dilution at 1) 1:3000 2) 1:5000 3) 1:10000