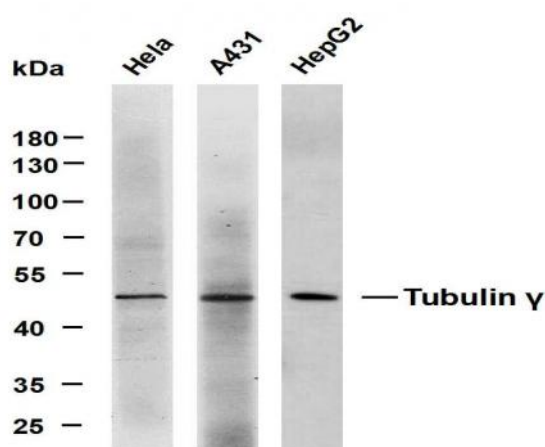


**Tubulin  $\gamma$  (PT2188) mouse mAb**

<b>Catalog No :</b>	YM4307
<b>Reactivity :</b>	Human;
<b>Applications :</b>	WB;IF;ELISA
<b>Target :</b>	Tubulin $\gamma$
<b>Gene Name :</b>	TUBG1 TUBG
<b>Protein Name :</b>	Tubulin gamma-1 chain (Gamma-1-tubulin) (Gamma-tubulin complex component 1) (GCP-1)
<b>Human Gene Id :</b>	7283
<b>Human Swiss Prot No :</b>	P23258/Q9NRH3
<b>Mouse Gene Id :</b>	103733
<b>Mouse Swiss Prot No :</b>	P83887
<b>Rat Gene Id :</b>	252921
<b>Rat Swiss Prot No :</b>	P83888
<b>Immunogen :</b>	Synthesized peptide derived from human Tubulin $\gamma$ . AA range: 350-451
<b>Specificity :</b>	This antibody detects endogenous levels of Tubulin $\gamma$ protein.
<b>Formulation :</b>	PBS, 50% glycerol, 0.05% Proclin 300, 0.05%BSA
<b>Source :</b>	Mouse, Monoclonal/IgG2b, kappa
<b>Dilution :</b>	WB 1:500-2000. IF 1:100-500. ELISA 1:1000-5000
<b>Purification :</b>	Protein G

<b>Concentration :</b>	1 mg/ml
<b>Storage Stability :</b>	-15°C to -25°C/1 year(Do not lower than -25°C)
<b>Observed Band :</b>	48kD
<b>Background :</b>	tubulin gamma 1(TUBG1) Homo sapiens This gene encodes a member of the tubulin superfamily. The encoded protein localizes to the centrosome where it binds to microtubules as part of a complex referred to as the gamma-tubulin ring complex. The protein mediates microtubule nucleation and is required for microtubule formation and progression of the cell cycle. A pseudogene of this gene is found on chromosome 7. [provided by RefSeq, Jan 2009],
<b>Function :</b>	Tubulin is the major constituent of microtubules. The gamma chain is found at microtubule organizing centers (MTOC) such as the spindle poles or the centrosome. Pericentriolar matrix component that regulates alpha/beta chain minus-end nucleation, centrosome duplication and spindle formation.
<b>Subcellular Location :</b>	Cytoplasmic
<b>Sort :</b>	1
<b>No4 :</b>	1
<b>Host :</b>	Mouse
<b>Modifications :</b>	Unmodified

## Products Images



Various whole cell lysates were separated by 10% SDS-PAGE, and the membrane was blotted with anti-Tubulin  $\gamma$  (PT2188) antibody. The HRP-conjugated anti-Mouse IgG antibody was used to detect the antibody. Lane 1: HeLa Lane 2: A431 Lane 3: HepG2