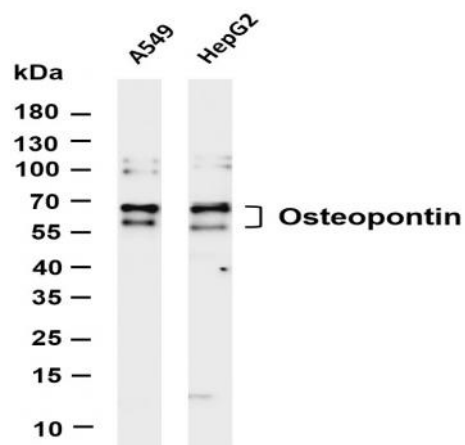


Osteopontin (PT0442R) PT® Rabbit mAb

Catalog No :	YM8281
Reactivity :	Human; Mouse; Rat;
Applications :	WB;IHC;IF;IP;ELISA
Target :	OPN
Fields :	>>PI3K-Akt signaling pathway;>>Apelin signaling pathway;>>Focal adhesion;>>ECM-receptor interaction;>>Toll-like receptor signaling pathway;>>GnRH secretion;>>Human papillomavirus infection
Gene Name :	SPP1
Protein Name :	Osteopontin
Human Gene Id :	6696
Human Swiss Prot No :	P10451
Mouse Gene Id :	20750
Mouse Swiss Prot No :	P10923
Rat Gene Id :	25353
Rat Swiss Prot No :	P08721
Specificity :	endogenous
Formulation :	PBS, 50% glycerol, 0.05% Proclin 300, 0.05%BSA
Source :	Monoclonal, rabbit, IgG, Kappa
Dilution :	IHC 1:200-1:1000;WB 1:2000-1:10000;IF 1:200-1:1000;ELISA 1:5000-1:20000;IP 1:50-1:200;
Purification :	Protein A

Storage Stability :	-15 °C to -25 °C/1 year(Do not lower than -25 °C)
Molecularweight :	35kD
Observed Band :	55,65kD
Cell Pathway :	Focal adhesion;ECM-receptor interaction;Toll_Like;
Background :	secreted phosphoprotein 1(SPP1) Homo sapiens The protein encoded by this gene is involved in the attachment of osteoclasts to the mineralized bone matrix. The encoded protein is secreted and binds hydroxyapatite with high affinity. The osteoclast vitronectin receptor is found in the cell membrane and may be involved in the binding to this protein. This protein is also a cytokine that upregulates expression of interferon-gamma and interleukin-12. Several transcript variants encoding different isoforms have been found for this gene. [provided by RefSeq, Oct 2011],
Function :	disease:This protein plays a principal role in urinary stone formation as the stone matrix.,function:Acts as a cytokine involved in enhancing production of interferon-gamma and interleukin-12 and reducing production of interleukin-10 and is essential in the pathway that leads to type I immunity.,function:Binds tightly to hydroxyapatite. Appears to form an integral part of the mineralized matrix. Probably important to cell-matrix interaction.,online information:Osteopontin entry,PTM:Extensively phosphorylated on clustered serine residues.,PTM:N- and O-glycosylated.,similarity:Belongs to the osteopontin family.,subunit:Ligand for integrin alpha-V/beta-3.,
Subcellular Location :	Secreted
Expression :	Bone. Found in plasma.
Tag :	hot,recombinant
Sort :	1
No3 :	ab75285
No4 :	1
Host :	Rabbit
Modifications :	Unmodified

Products Images



Various whole cell lysates were separated by 4-20% SDS-PAGE, and the membrane was blotted with anti-Osteopontin (PT0442R) antibody. The HRP-conjugated Goat anti-Rabbit IgG(H + L) antibody was used to detect the antibody. Lane 1: A549 Lane 2: HepG2 Predicted band size: 35kDa Observed band size: 60kDa