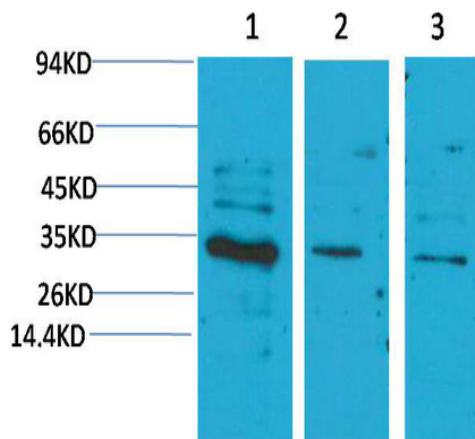


CNTF Polyclonal Antibody

Catalog No :	YN5627
Reactivity :	Human;Rat;Mouse
Applications :	WB
Target :	CNTF
Fields :	>>Cytokine-cytokine receptor interaction;>>JAK-STAT signaling pathway
Gene Name :	CNTF
Protein Name :	Ciliary neurotrophic factor (CNTF)
Human Gene Id :	1270
Human Swiss Prot No :	P26441
Mouse Swiss Prot No :	P51642
Rat Swiss Prot No :	P20294
Immunogen :	Synthetic Peptide of CNTF
Specificity :	CNTF protein(A218) detects endogenous levels of CNTF
Formulation :	Liquid in PBS containing 50% glycerol, 0.5% BSA and 0.02% sodium azide.
Source :	Polyclonal, Rabbit,IgG
Dilution :	WB 1:500-1000
Purification :	The antibody was affinity-purified from rabbit antiserum by affinity-chromatography using epitope-specific immunogen.
Concentration :	1 mg/ml

Storage Stability :	-15°C to -25°C/1 year(Do not lower than -25°C)
Observed Band :	30kD
Cell Pathway :	Cytokine-cytokine receptor interaction;Jak_STAT;
Background :	<p>The protein encoded by this gene is a polypeptide hormone whose actions appear to be restricted to the nervous system where it promotes neurotransmitter synthesis and neurite outgrowth in certain neuronal populations. The protein is a potent survival factor for neurons and oligodendrocytes and may be relevant in reducing tissue destruction during inflammatory attacks. A mutation in this gene, which results in aberrant splicing, leads to ciliary neurotrophic factor deficiency, but this phenotype is not causally related to neurologic disease. A read-through transcript variant composed of the upstream ZFP91 gene and CNTF sequence has been identified, but it is thought to be non-coding. Read-through transcription of ZFP91 and CNTF has also been observed in mouse. [provided by RefSeq, Oct 2010],</p>
Function :	<p>disease:Overexpressed in most acute myelogenous leukemia (AML) cases (27 over 29).,function:CNTF is a survival factor for various neuronal cell types. Seems to prevent the degeneration of motor axons after axotomy.,function:May be involved in transcriptional regulation. May play an important role in cell proliferation and/or anti-apoptosis.,online information:Ciliary neurotrophic factor entry,similarity:Belongs to the CNTF family.,similarity:Belongs to the krueppel C2H2-type zinc-finger protein family.,similarity:Contains 5 C2H2-type zinc fingers.,subunit:Homodimer.,tissue specificity:Expressed ubiquitously, particularly at high level in testis. Isoform 2 is testis specific.,tissue specificity:Nervous system.,</p>
Subcellular Location :	Cytoplasm.
Expression :	Nervous system.
Sort :	4357
No4 :	1
Host :	Rabbit
Modifications :	Unmodified

Products Images



Western blot analysis of 1) HeLa, 2) Mouse Brain Tissue, 3) Rat Brain Tissue with CNTF Rabbit pAb diluted at 1:2,000.