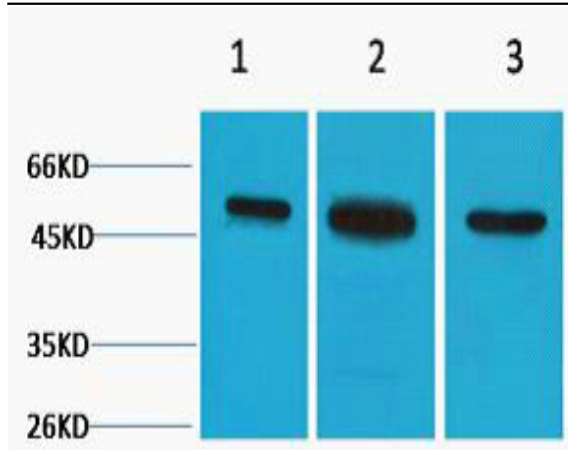


β II Tubulin Polyclonal Antibody

Catalog No :	YN5436
Reactivity :	Human;Mouse;Rat
Applications :	WB;IF
Target :	Tubulin β II
Fields :	>>Phagosome;>>Gap junction;>>Alzheimer disease;>>Parkinson disease;>>Amyotrophic lateral sclerosis;>>Huntington disease;>>Prion disease;>>Pathways of neurodegeneration - multiple diseases;>>Pathogenic Escherichia coli infection;>>Salmonella infection
Gene Name :	TUBB2A
Protein Name :	Tubulin beta-2A chain
Human Gene Id :	7280
Human Swiss Prot No :	Q13885
Mouse Gene Id :	22151
Mouse Swiss Prot No :	Q7TMM9
Rat Gene Id :	498736
Rat Swiss Prot No :	P85108
Immunogen :	Synthetic Peptide of β II Tubulin AA range: 80-130
Specificity :	The antibody detects endogenous β II tubulin protein.
Formulation :	PBS, pH 7.4, containing 0.5%BSA, 0.02% sodium azide as Preservative and 50% Glycerol.
Source :	Polyclonal, Rabbit,IgG

Dilution :	WB 1:500-2000; IF ICC 1:100-500
Purification :	The antibody was affinity-purified from rabbit antiserum by affinity-chromatography using epitope-specific immunogen.
Storage Stability :	-15°C to -25°C/1 year(Do not lower than -25°C)
Observed Band :	50kD
Cell Pathway :	Gap junction;Pathogenic Escherichia coli infection;
Background :	Microtubules, key participants in processes such as mitosis and intracellular transport, are composed of heterodimers of alpha- and beta-tubulins. The protein encoded by this gene is a beta-tubulin. Defects in this gene are associated with complex cortical dysplasia with other brain malformations-5. Two transcript variants encoding distinct isoforms have been found for this gene. [provided by RefSeq, Jul 2015],
Function :	function:Tubulin is the major constituent of microtubules. It binds two moles of GTP, one at an exchangeable site on the beta chain and one at a non-exchangeable site on the alpha-chain.,similarity:Belongs to the tubulin family.,subunit:Dimer of alpha and beta chains.,
Subcellular Location :	Cytoplasm, cytoskeleton .
Expression :	High expression in brain, where it represents 30% of all beta-tubulins.
Tag :	orthogonal
Sort :	1275
No4 :	1
Host :	Rabbit
Modifications :	Unmodified

Products Images



Western blot analysis of 1) Hela, 2) 3T3, 3) Rat Kidney tissue, diluted at 1:3000. Secondary antibody(catalog#:RS0002) was diluted at 1:20000