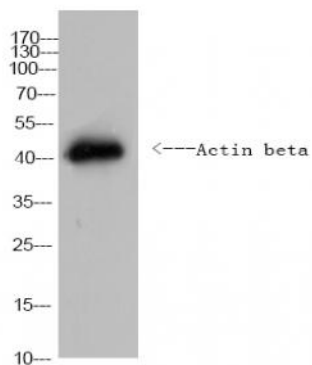


**Actin beta rabbit pAb(Caenorhabditis elegans)**

<b>Catalog No :</b>	YN5691
<b>Reactivity :</b>	C.elegans
<b>Applications :</b>	WB
<b>Target :</b>	Actin beta(Caenorhabditis elegans)
<b>Protein Name :</b>	Actin beta
<b>Human Swiss Prot No :</b>	P60709
<b>Immunogen :</b>	Purified recombinant Full lenth Actin beta (Caenorhabditis elegans)
<b>Specificity :</b>	This antibody detects endogenous levels of Actin beta (Caenorhabditis elegans)
<b>Formulation :</b>	Liquid in PBS containing 50% glycerol and 0.02% sodium azide.
<b>Source :</b>	Polyclonal, Rabbit,IgG
<b>Dilution :</b>	WB 1:5000-20000
<b>Purification :</b>	The antibody was affinity-purified from rabbit antiserum by affinity-chromatography using epitope-specific immunogen.
<b>Concentration :</b>	1 mg/ml
<b>Storage Stability :</b>	-15°C to -25°C/1 year(Do not lower than -25°C)
<b>Sort :</b>	1681
<b>No4 :</b>	1
<b>Host :</b>	Rabbit
<b>Modifications :</b>	Unmodified

## Products Images



Western Blot analysis of *C.elegans* cells using Actin beta rabbit pAb(*Caenorhabditis elegans*). Secondary antibody(catalog#:RS0002) was diluted at 1:20000