

**ATG4c Rabbit Polyclonal Antibody**

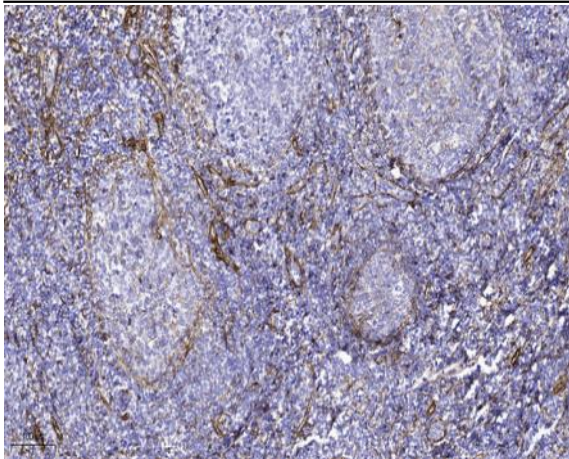
<b>Catalog No :</b>	YN5672
<b>Reactivity :</b>	Human;Mouse;Rat
<b>Applications :</b>	IHC;IF
<b>Target :</b>	Atg4C
<b>Fields :</b>	>>Autophagy - other;>>Autophagy - animal
<b>Gene Name :</b>	ATG4C APG4C AUTL1 AUTL3
<b>Protein Name :</b>	Cysteine protease ATG4C (EC 3.4.22.-) (AUT-like 3 cysteine endopeptidase) (Autophagin-3) (Autophagy-related cysteine endopeptidase 3) (Autophagy-related protein 4 homolog C)
<b>Human Gene Id :</b>	84938
<b>Human Swiss Prot No :</b>	Q96DT6
<b>Mouse Swiss Prot No :</b>	Q811C2
<b>Immunogen :</b>	Recombinant Protein of ATG4c
<b>Specificity :</b>	The antibody detects endogenous ATG4c protein
<b>Formulation :</b>	Liquid in PBS containing 50% glycerol, 0.5% BSA and 0.02% sodium azide.
<b>Source :</b>	Polyclonal, Rabbit,IgG
<b>Dilution :</b>	IHC 1:50-300. IF 1:50-200
<b>Purification :</b>	The antibody was affinity-purified from rabbit antiserum by affinity-chromatography using epitope-specific immunogen.
<b>Concentration :</b>	1 mg/ml
<b>Storage Stability :</b>	-15°C to -25°C/1 year(Do not lower than -25°C)

---

<b>Observed Band :</b>	57kD
<b>Cell Pathway :</b>	Regulation of autophagy;
<b>Background :</b>	<p>Autophagy is the process by which endogenous proteins and damaged organelles are destroyed intracellularly. Autophagy is postulated to be essential for cell homeostasis and cell remodeling during differentiation, metamorphosis, non-apoptotic cell death, and aging. Reduced levels of autophagy have been described in some malignant tumors, and a role for autophagy in controlling the unregulated cell growth linked to cancer has been proposed. This gene encodes a member of the autophagin protein family. The encoded protein is also designated as a member of the C-54 family of cysteine proteases. Alternate transcriptional splice variants, encoding the same protein, have been characterized. [provided by RefSeq, Jul 2008],</p>
<b>Function :</b>	<p>enzyme regulation:Inhibited by N-ethylmaleimide.,function:Cysteine protease required for autophagy, which cleaves the C-terminal part of either MAP1LC3, GABARAPL2 or GABARAP, allowing the liberation of form I. A subpopulation of form I is subsequently converted to a smaller form (form II). Form II, with a revealed C-terminal glycine, is considered to be the phosphatidylethanolamine (PE)-conjugated form, and has the capacity for the binding to autophagosomes.,similarity:Belongs to the peptidase C54 family.,tissue specificity:Highly expressed in skeletal muscle, heart, liver and testis.,</p>
<b>Subcellular Location :</b>	Cytoplasm .
<b>Expression :</b>	Brain,Heart,Placenta,Testis,
<b>Sort :</b>	2397
<b>No4 :</b>	1
<b>Host :</b>	Rabbit
<b>Modifications :</b>	Unmodified

---

## Products Images



Immunohistochemical analysis of paraffin-embedded human tonsil. 1, Tris-EDTA, pH 9.0 was used for antigen retrieval. 2 Antibody was diluted at 1:200 (4° overnight). 3, Secondary antibody was diluted at 1:200 (room temperature, 45 min).