

## CACNG2 Polyclonal Antibody

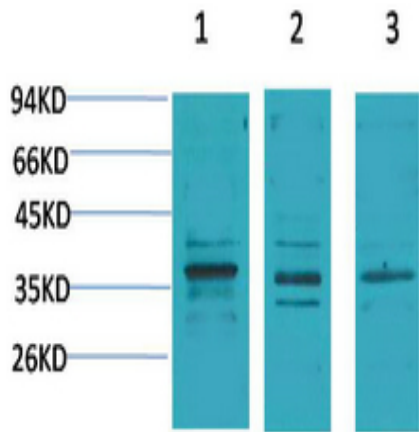
<b>Catalog No :</b>	YN5652
<b>Reactivity :</b>	Human;Mouse;Rat
<b>Applications :</b>	WB;IHC;IF
<b>Target :</b>	CACNG2
<b>Fields :</b>	>>MAPK signaling pathway;>>Cardiac muscle contraction;>>Adrenergic signaling in cardiomyocytes;>>Oxytocin signaling pathway;>>Hypertrophic cardiomyopathy;>>Arrhythmogenic right ventricular cardiomyopathy;>>Dilated cardiomyopathy
<b>Gene Name :</b>	CACNG2
<b>Protein Name :</b>	Voltage-dependent calcium channel gamma-2 subunit
<b>Human Gene Id :</b>	10369
<b>Human Swiss Prot No :</b>	Q9Y698
<b>Mouse Swiss Prot No :</b>	O88602
<b>Rat Swiss Prot No :</b>	Q71RJ2
<b>Immunogen :</b>	Synthetic Peptide of CACNG2 AA range: 58-108
<b>Specificity :</b>	The antibody detects endogenous CACNG2 protein.
<b>Formulation :</b>	PBS, pH 7.4, containing 0.5%BSA, 0.02% sodium azide as Preservative and 50% Glycerol.
<b>Source :</b>	Polyclonal, Rabbit,IgG
<b>Dilution :</b>	WB 1:1000-2000 IHC 1:200-500. IF 1:50-200
<b>Purification :</b>	The antibody was affinity-purified from rabbit antiserum by affinity-chromatography using epitope-specific immunogen.

---

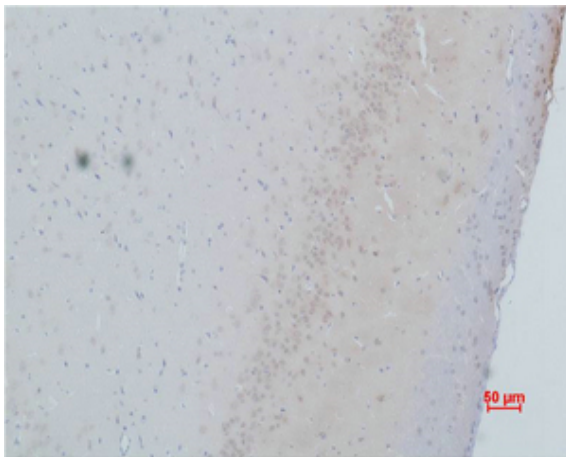
<b>Storage Stability :</b>	-15°C to -25°C/1 year(Do not lower than -25°C)
<b>Observed Band :</b>	36kD
<b>Cell Pathway :</b>	MAPK_ERK_Growth;MAPK_G_Protein;Cardiac muscle contraction;Hypertrophic cardiomyopathy (HCM);Arrhythmogenic right ventricular cardiomyopathy (ARVC);Dilated cardiomyopathy;
<b>Background :</b>	calcium voltage-gated channel auxiliary subunit gamma 2(CACNG2) Homo sapiens The protein encoded by this gene is a type I transmembrane AMPA receptor regulatory protein (TARP). TARPs regulate both trafficking and channel gating of the AMPA receptors. This gene is part of a functionally diverse eight-member protein subfamily of the PMP-22/EMP/MP20 family. This gene is a susceptibility locus for schizophrenia. [provided by RefSeq, Dec 2010],
<b>Function :</b>	function:Thought to stabilize the calcium channel in an inactivated (closed) state.,PTM:Phosphorylation of Thr-321 impairs interaction with DLG1 and DLG4.,similarity:Belongs to the PMP-22/EMP/MP20 family. CACNG subfamily.,subunit:The L-type calcium channel is composed of five subunits: alpha-1, alpha-2/delta, beta and gamma. Interacts with the PDZ domains of DLG4/PSD-95 and DLG1/SAP97. May interact with GOPC.,tissue specificity:Brain.,
<b>Subcellular Location :</b>	Membrane; Multi-pass membrane protein. Cell junction, synapse, synaptosome .
<b>Expression :</b>	Brain.
<b>Sort :</b>	3017
<b>No4 :</b>	1
<b>Host :</b>	Rabbit
<b>Modifications :</b>	Unmodified

---

## Products Images



Western blot analysis of 1) Human Brain Tissue, 2) Mouse Brain Tissue, 3) Rat Brain Tissue using CACNG2 Polyclonal Antibody. Secondary antibody(catalog#:RS0002) was diluted at 1:20000



Immunohistochemical analysis of paraffin-embedded Rat Brain Tissue using CACNG2 Polyclonal Antibody.