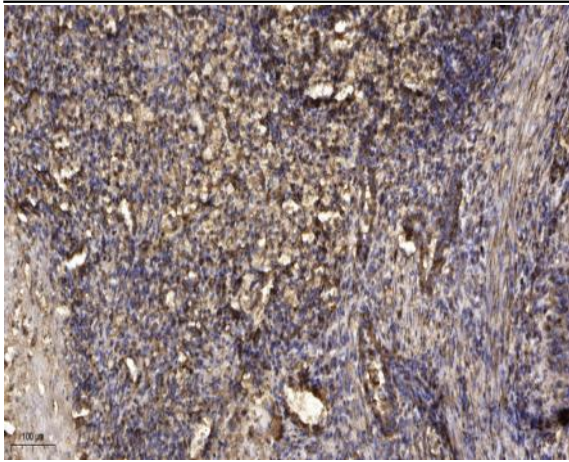


Gab1 Rabbit Polyclonal Antibody

Catalog No :	YN5596
Reactivity :	Human;Mouse;Rat
Applications :	IHC;IF
Target :	Gab 1
Fields :	>>EGFR tyrosine kinase inhibitor resistance;>>ErbB signaling pathway;>>Ras signaling pathway;>>Phospholipase D signaling pathway;>>Neurotrophin signaling pathway;>>Bacterial invasion of epithelial cells;>>Proteoglycans in cancer;>>Renal cell carcinoma;>>Hepatocellular carcinoma;>>Gastric cancer
Gene Name :	GAB1
Protein Name :	GRB2-associated-binding protein 1 (GRB2-associated binder 1) (Growth factor receptor bound protein 2-associated protein 1)
Human Gene Id :	2549
Human Swiss Prot No :	Q13480
Mouse Swiss Prot No :	Q9QYY0
Immunogen :	Recombinant Protein of Gab1
Specificity :	The antibody detects endogenous Gab1 protein
Formulation :	Liquid in PBS containing 50% glycerol, 0.5% BSA and 0.02% sodium azide.
Source :	Polyclonal, Rabbit,IgG
Dilution :	IHC 1:50-300. IF 1:50-200
Purification :	The antibody was affinity-purified from rabbit antiserum by affinity-chromatography using epitope-specific immunogen.
Concentration :	1 mg/ml

Storage Stability :	-15°C to -25°C/1 year(Do not lower than -25°C)
Observed Band :	76kD
Cell Pathway :	ErbB_HER;Neurotrophin;Renal cell carcinoma;
Background :	GRB2 associated binding protein 1(GAB1) Homo sapiens The protein encoded by this gene is a member of the IRS1-like multisubstrate docking protein family. It is an important mediator of branching tubulogenesis and plays a central role in cellular growth response, transformation and apoptosis. Two transcript variants encoding different isoforms have been found for this gene. [provided by RefSeq, Aug 2008],
Function :	function:Probably involved in EGF and insulin receptor signaling.,PTM:Phosphorylated on tyrosine residue(s) by the epidermal growth factor receptor (EGFR) and the insulin receptor (INSR). Tyrosine phosphorylation of GAB1 mediates interaction with several proteins that contain SH2 domains.,similarity:Belongs to the GAB family.,similarity:Contains 1 PH domain.,subunit:Interacts with GRB2 and with other SH2-containing proteins. Interacts with phosphorylated LAT2.,
Subcellular Location :	cytosol,
Expression :	Testis,Whole embryo,
Sort :	17444
No4 :	1
Host :	Rabbit
Modifications :	Unmodified

Products Images



Immunohistochemical analysis of paraffin-embedded human Squamous cell carcinoma of lung. 1, Antibody was diluted at 1:200(4° overnight). 2, Tris-EDTA,pH9.0 was used for antigen retrieval. 3,Secondary antibody was diluted at 1:200(room temperature, 45min).