

Kv10.1 Polyclonal Antibody

Catalog No :	YN5530
Reactivity :	Human;Rat;Mouse
Applications :	IHC;IF
Target :	Kv10.1
Gene Name :	KCNG3
Protein Name :	Potassium voltage-gated channel subfamily G member 3 (Voltage-gated potassium channel subunit Kv10.1) (Voltage-gated potassium channel subunit Kv6.3)
Human Gene Id :	170850
Human Swiss Prot No :	Q8TAE7
Mouse Swiss Prot No :	P59053
Rat Swiss Prot No :	Q8R523
Immunogen :	Synthetic Peptide of Kv10.1 AA range: 335-385
Specificity :	Kv10.1 protein(A259) detects endogenous levels of Kv10.1
Formulation :	Liquid in PBS containing 50% glycerol, 0.5% BSA and 0.02% sodium azide.
Source :	Polyclonal, Rabbit,IgG
Dilution :	IHC 1:100-200. IF 1:50-200
Purification :	The antibody was affinity-purified from rabbit antiserum by affinity-chromatography using epitope-specific immunogen.
Concentration :	1 mg/ml
Storage Stability :	-15°C to -25°C/1 year(Do not lower than -25°C)

Observed Band : 50kD

Background : Voltage-gated potassium (Kv) channels represent the most complex class of voltage-gated ion channels from both functional and structural standpoints. Their diverse functions include regulating neurotransmitter release, heart rate, insulin secretion, neuronal excitability, epithelial electrolyte transport, smooth muscle contraction, and cell volume. This gene encodes a member of the potassium channel, voltage-gated, subfamily G. This member is a gamma subunit functioning as a modulatory molecule. Alternative splicing results in two transcript variants encoding distinct isoforms. [provided by RefSeq, Jul 2008],

Function : domain:The segment S4 is probably the voltage-sensor and is characterized by a series of positively charged amino acids at every third position.,function:Potassium channel subunit. Modulates channel activity.,similarity:Belongs to the potassium channel family. G subfamily.,subcellular location:Has to be associated with KCNB1 or possibly another partner to get inserted in the plasma membrane. Remains intracellular in the absence of KCNB1.,subunit:Heteromultimer with KCNB1, KCNC1 and KCNF1. Does not form homomultimers.,tissue specificity:Detected in many parts of the brain with the exception of the cerebellum, in testis, pancreas, lung, kidney, ovary, small intestine, colon, thymus, adrenal gland and spinal cord.,

Subcellular Location : Cell membrane ; Multi-pass membrane protein . Cytoplasm . Has to be associated with KCNB1 or possibly another partner to get inserted in the plasma membrane (PubMed:12060745). Colocalizes with KCNB1 at the plasma membrane (PubMed:12060745, PubMed:19074135). Remains intracellular in the absence of KCNB1 (PubMed:12060745). .

Expression : Expressed in the brain, liver, testis, small intestine, colon, thymus and adrenal gland (PubMed:11852086, PubMed:12060745).

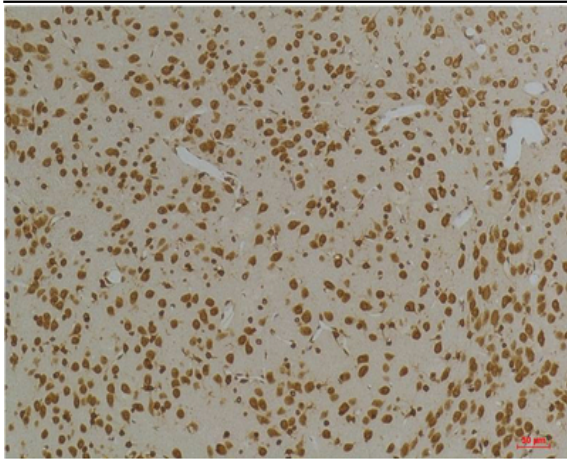
Sort : 17566

No4 : 1

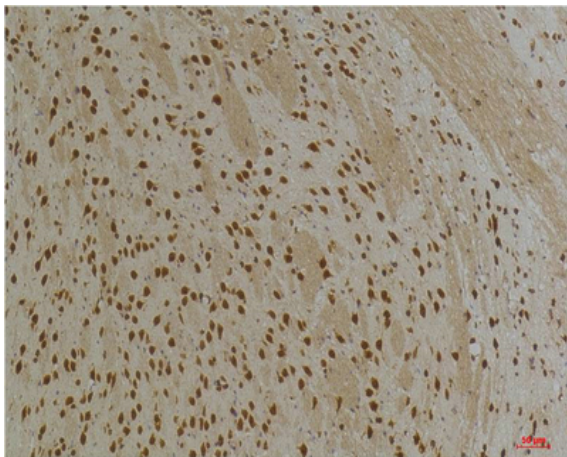
Host : Rabbit

Modifications : Unmodified

Products Images



Immunohistochemical analysis of paraffin-embedded Rat BrainTissue using Kv10.1 Rabbit pAb diluted at 1:200.



Immunohistochemical analysis of paraffin-embedded Mouse BrainTissue using Kv10.1 Rabbit pAb diluted at 1:200.