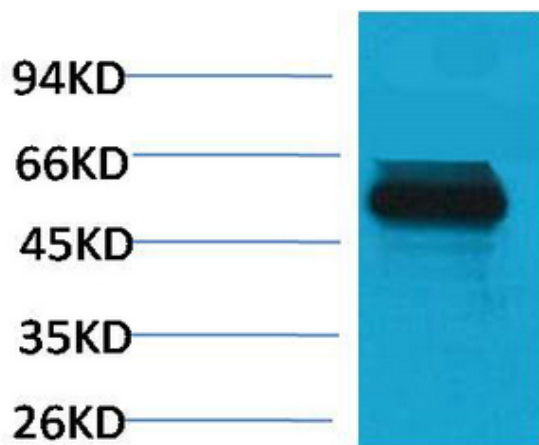


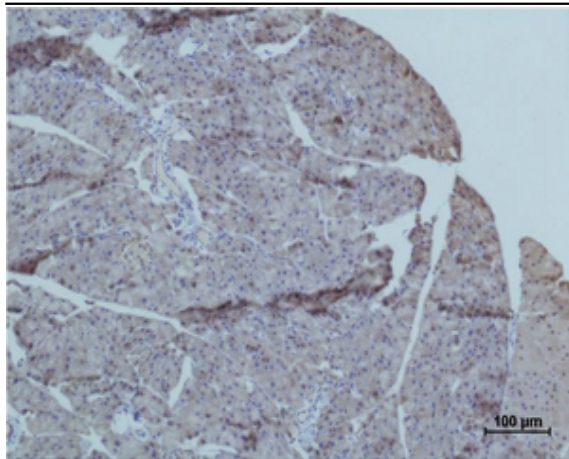
**TRIM72 Polyclonal Antibody**

<b>Catalog No :</b>	YN5445
<b>Reactivity :</b>	Human;Mouse;Rat
<b>Applications :</b>	WB;IHC;IF
<b>Target :</b>	TRIM72
<b>Gene Name :</b>	TRIM72
<b>Protein Name :</b>	Tripartite motif-containing protein 72
<b>Human Gene Id :</b>	493829
<b>Human Swiss Prot No :</b>	Q6ZMU5
<b>Mouse Swiss Prot No :</b>	Q1XH17
<b>Rat Swiss Prot No :</b>	A0JPQ4
<b>Immunogen :</b>	Recombinant Protein of TRIM72
<b>Specificity :</b>	The antibody detects endogenous TRIM72 protein.
<b>Formulation :</b>	PBS, pH 7.4, containing 0.5%BSA, 0.02% sodium azide as Preservative and 50% Glycerol.
<b>Source :</b>	Polyclonal, Rabbit,IgG
<b>Dilution :</b>	WB 1:1000 IHC 1:200-500. IF 1:50-200
<b>Purification :</b>	The antibody was affinity-purified from rabbit antiserum by affinity-chromatography using epitope-specific immunogen.
<b>Storage Stability :</b>	-15°C to -25°C/1 year(Do not lower than -25°C)
<b>Observed Band :</b>	53kD

<b>Background :</b>	similarity:Belongs to the TRIM/RBCC family.,similarity:Contains 1 B box-type zinc finger.,similarity:Contains 1 B30.2/SPRY domain.,similarity:Contains 1 RING-type zinc finger.,
<b>Function :</b>	similarity:Belongs to the TRIM/RBCC family.,similarity:Contains 1 B box-type zinc finger.,similarity:Contains 1 B30.2/SPRY domain.,similarity:Contains 1 RING-type zinc finger.,
<b>Subcellular Location :</b>	Cell membrane, sarcolemma . Cytoplasmic vesicle membrane . Tethered to plasma membrane and cytoplasmic vesicles via its interaction with phosphatidylserine. .
<b>Expression :</b>	Cerebellum,Muscle,Thymus,
<b>Tag :</b>	hot
<b>Sort :</b>	23549
<b>No4 :</b>	1
<b>Host :</b>	Rabbit
<b>Modifications :</b>	Unmodified

## Products Images





Immunohistochemical analysis of paraffin-embedded Mouse Pancreas Tissue using TRIM72 Polyclonal Antibody.