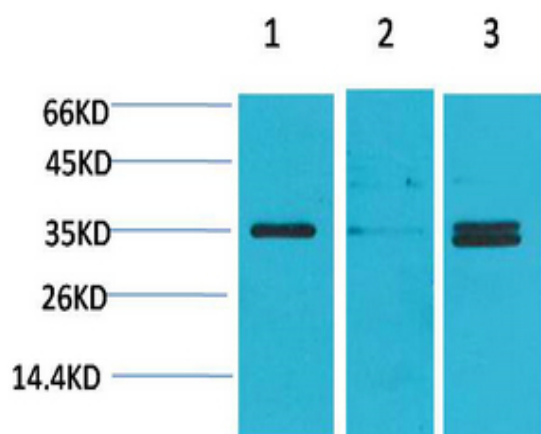


L-type Ca⁺⁺ CP γ 5 Polyclonal Antibody

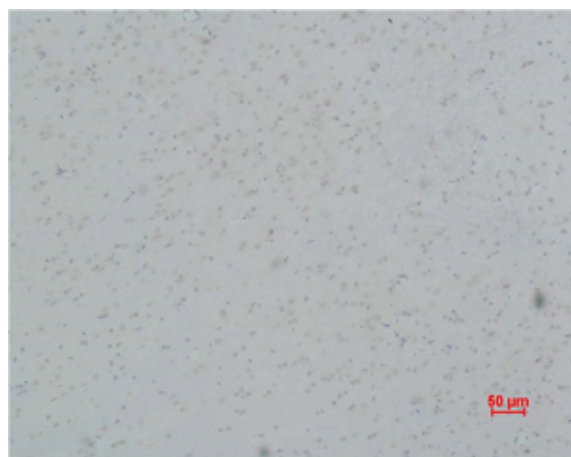
Catalog No :	YN5520
Reactivity :	Human;Mouse;Rat
Applications :	WB;IHC;IF
Target :	L-type Ca ⁺⁺ CP γ 5
Fields :	>>MAPK signaling pathway;>>Cardiac muscle contraction;>>Adrenergic signaling in cardiomyocytes;>>Oxytocin signaling pathway;>>Hypertrophic cardiomyopathy;>>Arrhythmogenic right ventricular cardiomyopathy;>>Dilated cardiomyopathy
Gene Name :	CACNG5
Protein Name :	Voltage-dependent calcium channel gamma-5 subunit
Human Gene Id :	10369
Human Swiss Prot No :	Q9UF02
Mouse Swiss Prot No :	Q8VHW4
Rat Swiss Prot No :	Q8VHW8
Immunogen :	Synthetic Peptide of L-type Ca ⁺⁺ CP γ 5 AA range: 110-190
Specificity :	The antibody detects endogenous L-type Ca ⁺⁺ CP γ 5 protein.
Formulation :	PBS, pH 7.4, containing 0.5%BSA, 0.02% sodium azide as Preservative and 50% Glycerol.
Source :	Polyclonal, Rabbit,IgG
Dilution :	WB 1:500-1000 IHC 1:100-200. IF 1:50-200
Purification :	The antibody was affinity-purified from rabbit antiserum by affinity-chromatography using epitope-specific immunogen.

Storage Stability :	-15°C to -25°C/1 year(Do not lower than -25°C)
Observed Band :	35kD
Cell Pathway :	MAPK_ERK_Growth;MAPK_G_Protein;Cardiac muscle contraction;Hypertrophic cardiomyopathy (HCM);Arrhythmogenic right ventricular cardiomyopathy (ARVC);Dilated cardiomyopathy;
Background :	calcium voltage-gated channel auxiliary subunit gamma 5(CACNG5) Homo sapiens The protein encoded by this gene is a type II transmembrane AMPA receptor regulatory protein (TARP). TARPs regulate both trafficking and channel gating of the AMPA receptors. This gene is part of a functionally diverse eight-member protein subfamily of the PMP-22/EMP/MP20 family and is located in a cluster with two family members, a type I TARP and a calcium channel gamma subunit. This gene is a susceptibility locus for schizophrenia and bipolar disorder. [provided by RefSeq, Dec 2010],
Function :	function:Thought to stabilize the calcium channel in an inactivated (closed) state.,similarity:Belongs to the PMP-22/EMP/MP20 family. CACNG subfamily.,subunit:The L-type calcium channel is composed of five subunits: alpha-1, alpha-2/delta, beta and gamma.,
Subcellular Location :	Membrane ; Multi-pass membrane protein . Cell junction, synapse, postsynaptic density membrane .
Expression :	Brain cortex,Thalamus,
Sort :	17589
No4 :	1
Host :	Rabbit
Modifications :	Unmodified

Products Images



Western blot analysis of 1) Human Brain Tissue, 2) Mouse Brain Tissue, 3) Rat Brain Tissue using L-type Ca^{++} CP $\gamma 5$ Polyclonal Antibody. Secondary antibody(catalog#:RS0002) was diluted at 1:20000



Immunohistochemical analysis of paraffin-embedded Rat Brain Tissue using L-type Ca^{++} CP $\gamma 5$ Polyclonal Antibody.