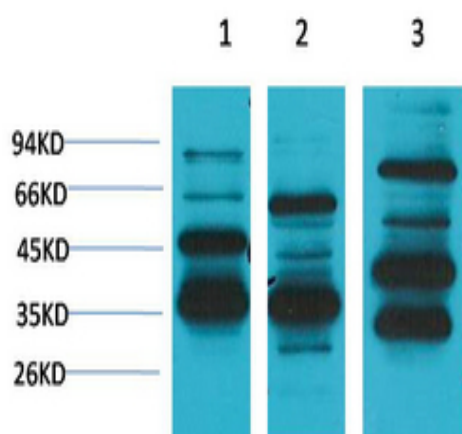


Mas1 Polyclonal Antibody

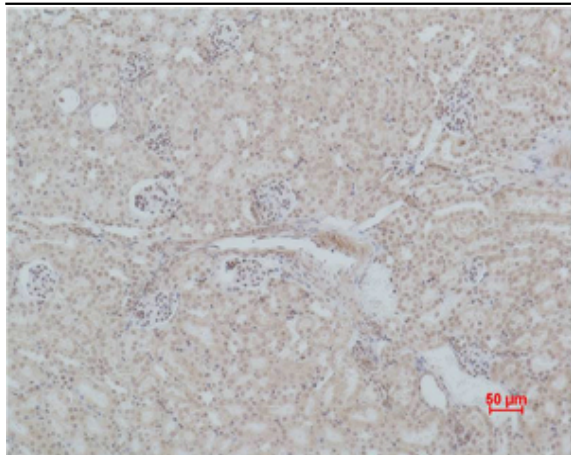
Catalog No :	YN5519
Reactivity :	Human;Mouse;Rat
Applications :	WB;IHC;IF
Target :	Mas1
Fields :	>>Neuroactive ligand-receptor interaction;>>Renin-angiotensin system;>>Coronavirus disease - COVID-19
Gene Name :	MAS1
Protein Name :	Proto-oncogene Mas
Human Gene Id :	4142
Human Swiss Prot No :	P04201
Mouse Swiss Prot No :	P30554
Rat Swiss Prot No :	P12526
Immunogen :	Synthetic Peptide of Mas1
Specificity :	The antibody detects endogenous Mas1 protein.
Formulation :	PBS, pH 7.4, containing 0.5%BSA, 0.02% sodium azide as Preservative and 50% Glycerol.
Source :	Polyclonal, Rabbit,IgG
Dilution :	WB 1:2000-5000 IHC 1:200-500. IF 1:50-200
Purification :	The antibody was affinity-purified from rabbit antiserum by affinity-chromatography using epitope-specific immunogen.
Storage Stability :	-15°C to -25°C/1 year(Do not lower than -25°C)

Observed Band :	36-50kD
Cell Pathway :	Neuroactive ligand-receptor interaction;Renin-angiotensin system;
Background :	This gene encodes a class I seven-transmembrane G-protein-coupled receptor. The encoded protein is a receptor for angiotensin-(1-7) and preferentially couples to the Gq protein, activating the phospholipase C signaling pathway. The encoded protein may play a role in multiple processes including hypotension, smooth muscle relaxation and cardioprotection by mediating the effects of angiotensin-(1-7). [provided by RefSeq, May 2012],
Function :	caution:Was originally (PubMed:3419518) thought to be a receptor for angiotensin II.,disease:The MAS oncogene has a weak focus-inducing activity in transfected NIH 3T3 cells.,similarity:Belongs to the G-protein coupled receptor 1 family.,
Subcellular Location :	Cell membrane ; Multi-pass membrane protein .
Sort :	17597
No4 :	1
Host :	Rabbit
Modifications :	Unmodified

Products Images



Western blot analysis of 1) Human Brain Tissue, 2) Mouse Brain Tissue, 3) Rat Brain Tissue using Mas1 Polyclonal Antibody. Secondary antibody(catalog#:RS0002) was diluted at 1:20000



Immunohistochemical analysis of paraffin-embedded Mouse Kidney Tissue using Mas1 Polyclonal Antibody.