

Cytokeratin 4 (ABT061) mouse mAb

Catalog No :	YM4873
Reactivity :	Human;
Applications :	IHC;WB;IF;ELISA
Target :	Cytokeratin 4
Gene Name :	KRT4 CYK4
Protein Name :	Keratin, type II cytoskeletal 4 (Cytokeratin-4) (CK-4) (Keratin-4) (K4) (Type-II keratin Kb4)
Human Swiss Prot No :	P19013
Immunogen :	Synthesized peptide derived from human Cytokeratin 4 AA range: 400-534
Specificity :	The antibody can specifically recognize human CK4 protein, and shows no cross reaction with CK5, 6, 7, 8, 14, 15, 17, 20.
Formulation :	PBS, 50% glycerol, 0.05% Proclin 300, 0.05%BSA
Source :	Mouse, Monoclonal/IgG1, kappa
Dilution :	IHC 1:200-1000. WB 1:500-2000. IF 1:100-500. ELISA 1:1000-5000
Purification :	Protein G
Storage Stability :	-15°C to -25°C/1 year(Do not lower than -25°C)
Molecularweight :	57kD
Observed Band :	57kD
Background :	CK4 is a cytokeratin with a molecular weight of 59 kDa. It is a member of type II cytokeratin family. CK4 is widely expressed in non keratinocytes and stratified squamous epithelium. It is mainly used to label esophageal and oral squamous epithelial cells and tumors of their origin.

Function : disease:Defects in KRT4 are a cause of white sponge nevus of cannon (WSN) [MIM:193900]. WSN is a rare autosomal dominant disorder which predominantly affects non-cornified stratified squamous epithelia. Clinically, it is characterized by the presence of soft, white, and spongy plaques in the oral mucosa. The characteristic histopathologic features are epithelial thickening, parakeratosis, and vacuolization of the suprabasal layer of oral epithelial keratinocytes. Less frequently the mucous membranes of the nose, esophagus, genitalia and rectum are involved.,miscellaneous:There are two types of cytoskeletal and microfibrillar keratin: I (acidic; 40-55 kDa) and II (neutral to basic; 56-70 kDa).,polymorphism:Three alleles of K4 are known: K4A2 (shown here), K4A1 and K4B.,similarity:Belongs to the intermediate filament family.,subunit:Heterotetramer of two type I and two type II keratins. Ke

Subcellular Location : Cytoplasmic, Membranous

Expression : Detected in the suprabasal layer of the stratified epithelium of the esophagus, exocervix, vagina, mouth and lingual mucosa, and in cells and cell clusters in the mucosa and serous gland ducts of the esophageal submucosa (at protein level). Expressed widely in the exocervix and esophageal epithelium, with lowest levels detected in the basal cell layer.

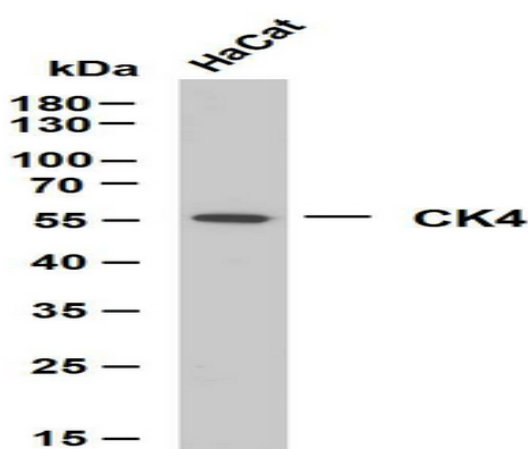
Sort : 4925

No4 : 1

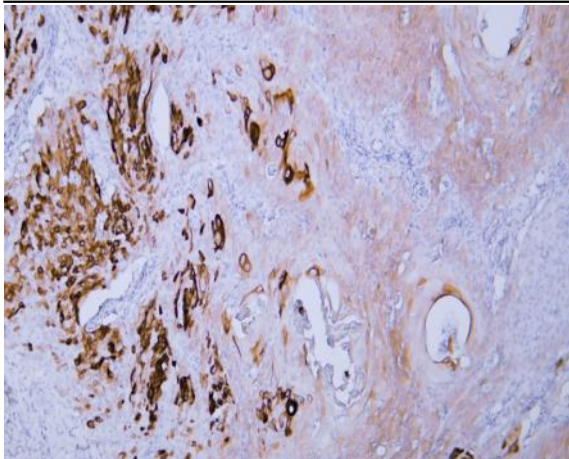
Host : Mouse

Modifications : Unmodified

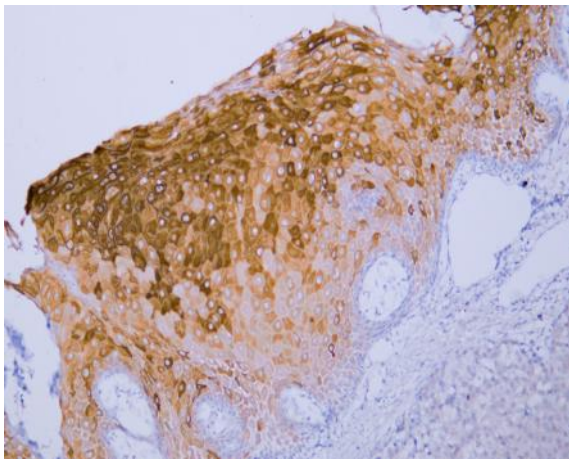
Products Images



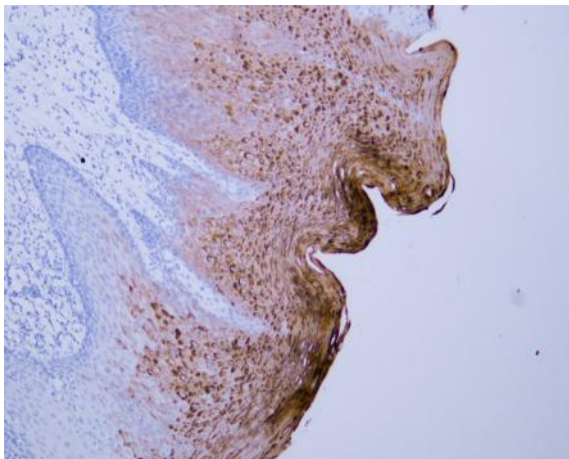
HaCat whole cell lysates were separated by 10% SDS-PAGE, and the membrane was blotted with anti-CK4(ABT061) antibody. The HRP-conjugated Goat anti-Mouse IgG(H + L) antibody was used to detect the antibody. Lane 1: HaCat



Human cervical squamous cell carcinoma tissue was stained with Anti-Cytokeratin 4 (ABT061) Antibody



Human esophageal squamous cell carcinoma tissue was stained with Anti-Cytokeratin 4 (ABT061) Antibody



Human oral squamous cell carcinoma tissue was stained with Anti-Cytokeratin 4 (ABT061) Antibody