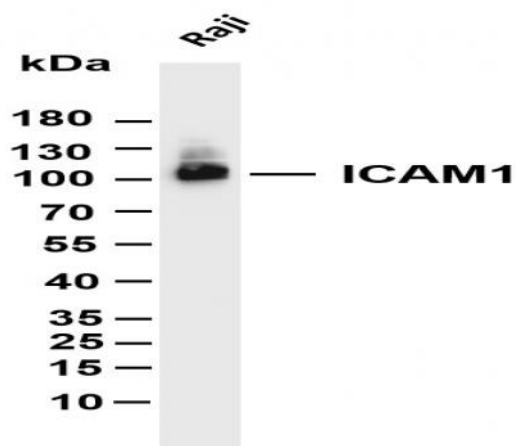


ICAM1 (PT0133R) rabbit mAb

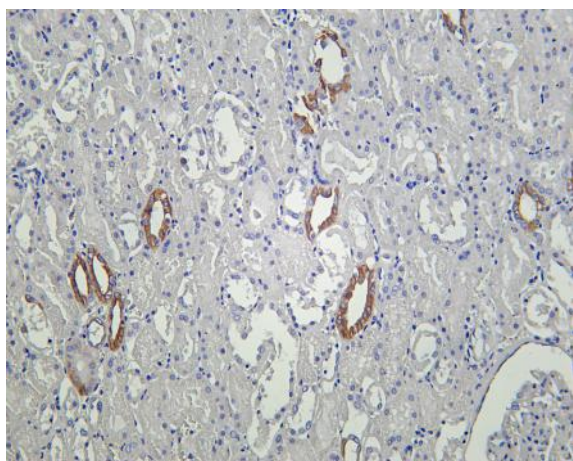
Catalog No :	YM8074
Reactivity :	Human;
Applications :	WB;IHC;IF;IP;ELISA
Target :	ICAM-1
Fields :	>>NF-kappa B signaling pathway;>>Cell adhesion molecules;>>Natural killer cell mediated cytotoxicity;>>TNF signaling pathway;>>Leukocyte transendothelial migration;>>AGE-RAGE signaling pathway in diabetic complications;>>African trypanosomiasis;>>Malaria;>>Staphylococcus aureus infection;>>Influenza A;>>Human T-cell leukemia virus 1 infection;>>Kaposi sarcoma-associated herpesvirus infection;>>Epstein-Barr virus infection;>>Rheumatoid arthritis;>>Viral myocarditis;>>Lipid and atherosclerosis;>>Fluid shear stress and atherosclerosis
Gene Name :	ICAM1
Protein Name :	Intercellular adhesion molecule 1
Human Gene Id :	3383
Human Swiss Prot No :	P05362
Mouse Swiss Prot No :	P13597
Specificity :	endogenous
Formulation :	PBS, 50% glycerol, 0.05% Proclin 300, 0.05%BSA
Source :	Monoclonal, rabbit, IgG, Kappa
Dilution :	IHC 1:100-200,WB 1:1000-5000,IF 1:200-1000,ELISA 1:5000-20000,IP 1:50-200
Purification :	Protein A
	-15°C to -25°C/1 year(Do not lower than -25°C)

Biological Stability :	58kD
Observed Band :	100kD
Cell Pathway :	Cell adhesion molecules (CAMs);Natural killer cell mediated cytotoxicity;Leukocyte transendothelial migration;Viral myocarditis;
Background :	This gene encodes a cell surface glycoprotein which is typically expressed on endothelial cells and cells of the immune system. It binds to integrins of type CD11a / CD18, or CD11b / CD18 and is also exploited by Rhinovirus as a receptor. [provided by RefSeq, Jul 2008],
Function :	function:ICAM proteins are ligands for the leukocyte adhesion protein LFA-1 (integrin alpha-L/beta-2). During leukocyte trans-endothelial migration, ICAM1 engagement promotes the assembly of endothelial apical cups through SGEF and RHOG activation. In case of rhinovirus infection acts as a cellular receptor for the virus.,online information:ICAM-1,online information:Icosahedral capsid structure,online information:Intercellular adhesion molecule entry,polymorphism:Homozygotes with ICAM1-Kalifi Met-56 seem to have an increased risk for cerebral malaria.,PTM:Monoubiquitinated, which is promoted by MARCH9 and leads to endocytosis.,similarity:Belongs to the immunoglobulin superfamily. ICAM family.,similarity:Contains 5 Ig-like C2-type (immunoglobulin-like) domains.,subunit:Homodimer (Probable). Interacts with human herpesvirus 8 MIR2 protein (Probable). Interacts with MUC1 and promotes cell a
Subcellular Location :	Membranous
Expression :	Blood,Kidney,Liver,Melanoma,Plasma,
Tag :	hot,recombinant
Sort :	1
No4 :	1
Host :	Rabbit
Modifications :	Unmodified

Products Images



Various whole cell lysates were separated by 4-20% SDS-PAGE, and the membrane was blotted with anti-ICAM1 (PT0133R) antibody. The HRP-conjugated Goat anti-Rabbit IgG(H + L) antibody was used to detect the antibody. Lane 1: Raji Predicted band size: 58kDa Observed band size: 100kDa



Human kidney was stained with Anti-ICAM1 (PT0133R) rabbit antibody