

**S100A6 (ABT179R) rabbit mAb**

<b>Catalog No :</b>	YM7275
<b>Reactivity :</b>	Human;
<b>Applications :</b>	IHC; ELISA
<b>Target :</b>	S100A6
<b>Gene Name :</b>	S100A6
<b>Protein Name :</b>	S100A6
<b>Human Gene Id :</b>	6277
<b>Human Swiss Prot No :</b>	P06703
<b>Immunogen :</b>	Synthesized peptide derived from human S100A6 AA range:50-90
<b>Specificity :</b>	This antibody detects endogenous levels of S100A6
<b>Formulation :</b>	PBS, 50% glycerol, 0.05% Proclin 300, 0.05%BSA
<b>Source :</b>	Monoclonal, Rabbit IgG1, Kappa
<b>Dilution :</b>	IHC 1:100-500, ELISA 1:5000-20000
<b>Purification :</b>	Recombinant Expression and Affinity purified
<b>Storage Stability :</b>	-15°C to -25°C/1 year(Do not lower than -25°C)
<b>Background :</b>	<p>S100 calcium binding protein A6(S100A6) Homo sapiens The protein encoded by this gene is a member of the S100 family of proteins containing 2 EF-hand calcium-binding motifs. S100 proteins are localized in the cytoplasm and/or nucleus of a wide range of cells, and involved in the regulation of a number of cellular processes such as cell cycle progression and differentiation. S100 genes include at least 13 members which are located as a cluster on chromosome 1q21. This protein may function in stimulation of Ca<sup>2+</sup>-dependent insulin release, stimulation of prolactin secretion, and exocytosis. Chromosomal rearrangements and altered expression of this gene have been implicated in melanoma. [provided</p>

---

by RefSeq, Jul 2008],

---

**Function :** induction:Preferentially expressed when quiescent fibroblasts are stimulated to proliferate. It is inducible by growth factors and overexpressed in acute myeloid leukemias.,miscellaneous:This protein co-purified with the prolactin receptor.,PTM:The N-terminus is blocked.,similarity:Belongs to the S-100 family.,similarity:Contains 2 EF-hand domains.,subunit:Homodimer, antiparallel. Interacts with SUGT1.,

---

**Subcellular Location :** Nuclear, Cytoplasmic

---

**Expression :** Brain,Fibroblast,Placenta,Platelet,

---

**Tag :** recombinant

---

**Sort :** 800

---

**No4 :** 1

---

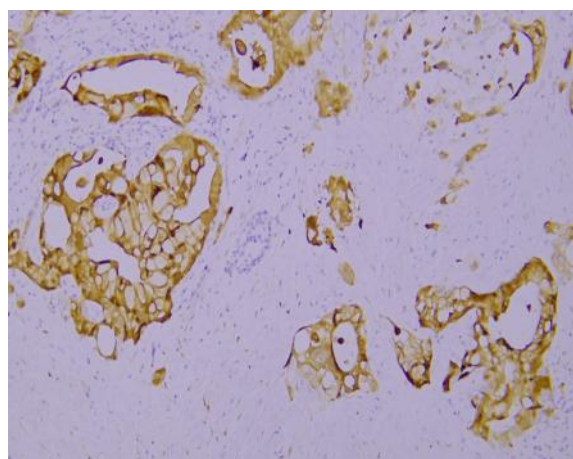
**Host :** Rabbit

---

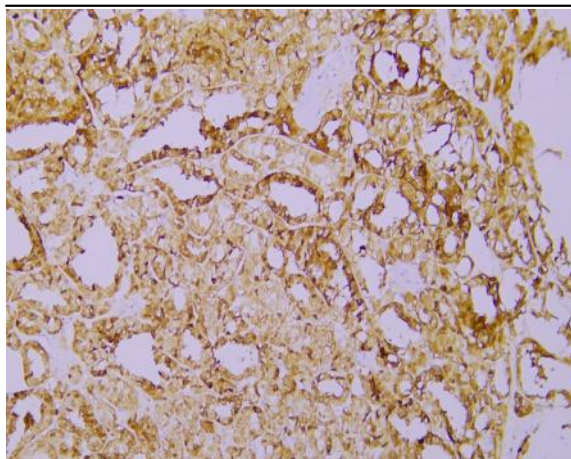
**Modifications :** Unmodified

---

## Products Images



Immunohistochemical analysis of paraffin-embedded human Pancreatic carcinoma. 1, Antibody was incubated at 4° overnight. 2, TRIS-EDTA of pH8.0 was used for antigen retrieval. 3,Secondary antibody was diluted at 1:200(room temperature, 30min).



Immunohistochemical analysis of paraffin-embedded human Papillary thyroid carcinoma. 1, Antibody was incubated at 4° overnight. 2, TRIS-EDTA of pH8.0 was used for antigen retrieval. 3, Secondary antibody was diluted at 1:200(room temperature, 30min).