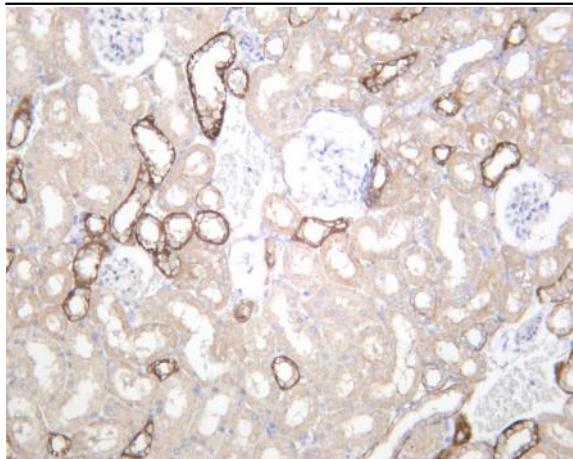


OCLN (PT0483R) PT® Rabbit mAb

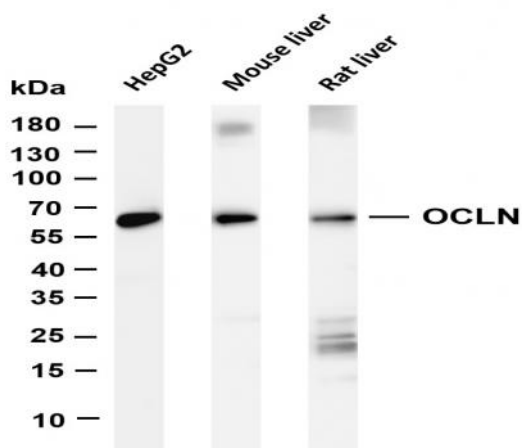
Catalog No :	YM8316
Reactivity :	Human; Mouse; Rat;
Applications :	WB;IHC;IF;IP;ELISA
Target :	OCLN
Fields :	>>Cell adhesion molecules;>>Tight junction;>>Leukocyte transendothelial migration;>>Pathogenic Escherichia coli infection;>>Hepatitis C
Gene Name :	OCLN
Protein Name :	Occludin;OCN
Human Gene Id :	100506658
Human Swiss Prot No :	Q16625
Mouse Swiss Prot No :	Q61146
Rat Swiss Prot No :	Q6P6T5
Specificity :	endogenous
Formulation :	PBS, 50% glycerol, 0.05% Proclin 300, 0.05%BSA
Source :	Monoclonal, rabbit, IgG, Kappa
Dilution :	IHC 1:200-1:1000;WB 1:2000-1:10000;IF 1:200-1:1000;ELISA 1:5000-1:20000;IP 1:50-1:200;
Purification :	Protein A
Storage Stability :	-15°C to -25°C/1 year(Do not lower than -25°C)
Molecularweight :	59kD

Observed Band :	65kD
Cell Pathway :	Cell adhesion molecules (CAMs);Tight junction;Leukocyte transendothelial migration;Pathogenic Escherichia coli infection;
Background :	This gene encodes an integral membrane protein that is required for cytokine-induced regulation of the tight junction paracellular permeability barrier. Mutations in this gene are thought to be a cause of band-like calcification with simplified gyration and polymicrogyria (BLC-PMG), an autosomal recessive neurologic disorder that is also known as pseudo-TORCH syndrome. Alternative splicing results in multiple transcript variants. A related pseudogene is present 1.5 Mb downstream on the q arm of chromosome 5. [provided by RefSeq, Apr 2011],
Function :	protein complex assembly, cellular amino acid derivative metabolic process, sulfur metabolic process, nucleoside metabolic process, ribonucleoside metabolic process, purine nucleoside metabolic process, macromolecular complex subunit organization, purine ribonucleoside metabolic process, S-adenosylhomocysteine metabolic process, S-adenosylmethionine metabolic process, macromolecular complex assembly, protein complex biogenesis,
Subcellular Location :	Membrane
Expression :	Localized at tight junctions of both epithelial and endothelial cells. Highly expressed in kidney. Not detected in testis.
Tag :	hot,recombinant
Sort :	1
No3 :	ab216327
No4 :	1
Host :	Rabbit
Modifications :	Unmodified

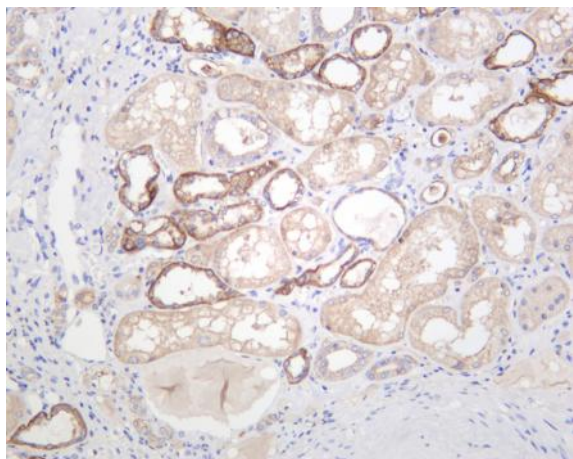
Products Images



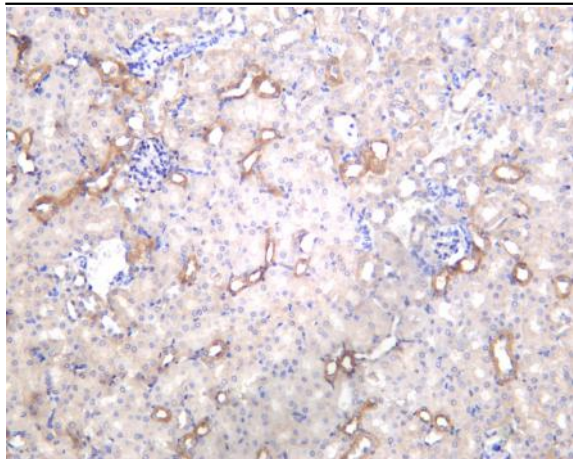
Rat kidney was stained with anti-OCLN (PT0483R) rabbit antibody



Various whole cell lysates were separated by 4-20% SDS-PAGE, and the membrane was blotted with anti-OCLN (PT0483R) antibody. The HRP-conjugated Goat anti-Rabbit IgG(H + L) antibody was used to detect the antibody. Lane 1: HepG2 Lane 2: Mouse liver Lane 3: Rat liver Predicted band size: 59kDa Observed band size: 65kDa



Human kidney was stained with anti-OCLN (PT0483R) rabbit antibody



Mouse kidney was stained with anti-OCLN (PT0483R) rabbit antibody