

**S100A4 (ABT178R) rabbit mAb**

<b>Catalog No :</b>	YM7274
<b>Reactivity :</b>	Human;
<b>Applications :</b>	IHC; ELISA
<b>Target :</b>	S100A4
<b>Gene Name :</b>	S100A4
<b>Protein Name :</b>	Protein S100-A4 (Calvasculin) (Metastasin) (Placental calcium-binding protein) (Protein Mts1) (S100 calcium-binding protein A4)
<b>Human Gene Id :</b>	6275
<b>Human Swiss Prot No :</b>	P26447
<b>Immunogen :</b>	Synthesized peptide derived from human S100A4 AA range:50-101
<b>Specificity :</b>	This antibody detects endogenous levels of S100A4
<b>Formulation :</b>	PBS, 50% glycerol, 0.05% Proclin 300, 0.05%BSA
<b>Source :</b>	Monoclonal, Rabbit IgG1, Kappa
<b>Dilution :</b>	IHC 1:100-500, ELISA 1:5000-20000
<b>Purification :</b>	Recombinant Expression and Affinity purified
<b>Storage Stability :</b>	-15°C to -25°C/1 year(Do not lower than -25°C)
<b>Background :</b>	<p>S100 calcium binding protein A4(S100A4) Homo sapiens The protein encoded by this gene is a member of the S100 family of proteins containing 2 EF-hand calcium-binding motifs. S100 proteins are localized in the cytoplasm and/or nucleus of a wide range of cells, and involved in the regulation of a number of cellular processes such as cell cycle progression and differentiation. S100 genes include at least 13 members which are located as a cluster on chromosome 1q21. This protein may function in motility, invasion, and tubulin polymerization. Chromosomal rearrangements and altered expression of this gene have been</p>

implicated in tumor metastasis. Multiple alternatively spliced variants, encoding the same protein, have been identified. [provided by RefSeq, Jul 2008],

**Function :** similarity:Belongs to the S-100 family.,similarity:Contains 2 EF-hand domains.,subunit:Homodimer. Interacts with PPFIBP1 in a calcium-dependent mode.,tissue specificity:Ubiquitously expressed.,

**Subcellular Location :** Nuclear, Cytoplasmic

**Expression :** Ubiquitously expressed.

**Tag :** recombinant

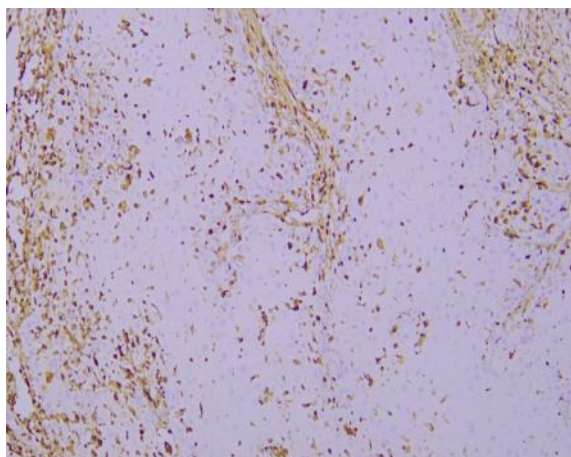
**Sort :** 800

**No4 :** 1

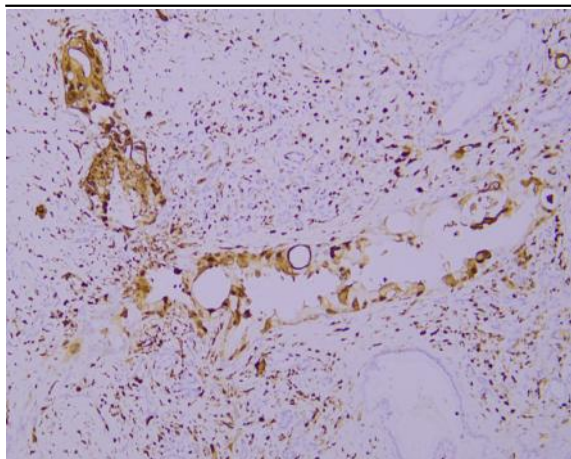
**Host :** Rabbit

**Modifications :** Unmodified

## Products Images



Immunohistochemical analysis of paraffin-embedded human Cutaneous squamous carcinoma. 1, Antibody was incubated at 4° overnight. 2, Citrate buffer of pH6.0 was used for antigen retrieval. 3,Secondary antibody was diluted at 1:200(room temperature, 30min).



Immunohistochemical analysis of paraffin-embedded human Pancreatic carcinoma. 1, Antibody was incubated at 4° overnight. 2, Citrate buffer of pH6.0 was used for antigen retrieval. 3,Secondary antibody was diluted at 1:200(room temperature, 30min).