

**BOB.1 (ABT103R) rabbit mAb**

<b>Catalog No :</b>	YM7248
<b>Reactivity :</b>	Human;Mouse;
<b>Applications :</b>	IHC;WB; ELISA
<b>Target :</b>	BOB.1
<b>Gene Name :</b>	POU2AF1
<b>Protein Name :</b>	POU domain class 2-associating factor 1 (B-cell-specific coactivator OBF-1) (BOB-1) (OCA-B) (OCT-binding factor 1)
<b>Human Gene Id :</b>	5450
<b>Human Swiss Prot No :</b>	Q16633
<b>Immunogen :</b>	Synthesized peptide derived from human BOB.1 AA range:150-256
<b>Specificity :</b>	This antibody detects endogenous levels of BOB.1
<b>Formulation :</b>	PBS, 50% glycerol, 0.05% Proclin 300, 0.05%BSA
<b>Source :</b>	Monoclonal, Rabbit IgG1, Kappa
<b>Dilution :</b>	IHC 1:100-500, WB 1:500-1000, ELISA 1:5000-20000
<b>Purification :</b>	Recombinant Expression and Affinity purified
<b>Storage Stability :</b>	-15°C to -25°C/1 year(Do not lower than -25°C)
<b>Molecularweight :</b>	27kD
<b>Background :</b>	disease:A chromosomal aberration involving POU2AF1/OBF1 may be a cause of a form of B-cell leukemia. Translocation t(3;11)(q27;q23) with BCL6.,function:Transcriptional coactivator that specifically associates with either OCT1 or OCT2. It boosts the OCT1 mediated promoter activity and to a lesser extent, that of OCT2. It has no intrinsic DNA-binding activity. It recognizes the

POU domains of OCT1 and OCT2. It is essential for the response of B-cells to antigens and required for the formation of germinal centers.,PTM:Ubiquitinated; mediated by SIAH1 or SIAH2 and leading to its subsequent proteasomal degradation.,similarity:Belongs to the POU2AF1 family.,tissue specificity:B-cell specific.,

---

**Function :**

disease:A chromosomal aberration involving POU2AF1/OBF1 may be a cause of a form of B-cell leukemia. Translocation t(3;11)(q27;q23) with BCL6.,function:Transcriptional coactivator that specifically associates with either OCT1 or OCT2. It boosts the OCT1 mediated promoter activity and to a lesser extent, that of OCT2. It has no intrinsic DNA-binding activity. It recognizes the POU domains of OCT1 and OCT2. It is essential for the response of B-cells to antigens and required for the formation of germinal centers.,PTM:Ubiquitinated; mediated by SIAH1 or SIAH2 and leading to its subsequent proteasomal degradation.,similarity:Belongs to the POU2AF1 family.,tissue specificity:B-cell specific.,

---

**Subcellular Location :**

Nuclear, Cytoplasmic

---

**Expression :**

B-cell specific (PubMed:7779176, PubMed:7859290). Detected in mainly in spleen, but also in thymus, peripheral blood leukocyte and small intestine (PubMed:7779176, PubMed:7859290).

---

**Tag :**

recombinant

---

**Sort :**

800

---

**No4 :**

1

---

**Host :**

Rabbit

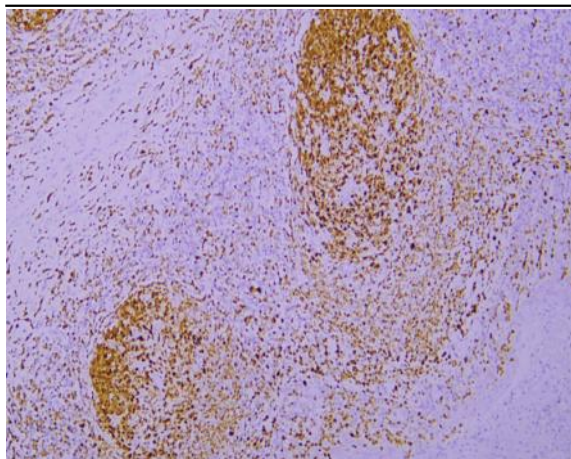
---

**Modifications :**

Unmodified

---

## Products Images



Immunohistochemical analysis of paraffin-embedded human Tonsil. 1, Antibody was incubated at 4° overnight. 2, Citrate buffer of pH6.0 was used for antigen retrieval. 3, Secondary antibody was diluted at 1:200(room temperature, 30min).