

## PSMD11 (PTR1354) mouse mAb

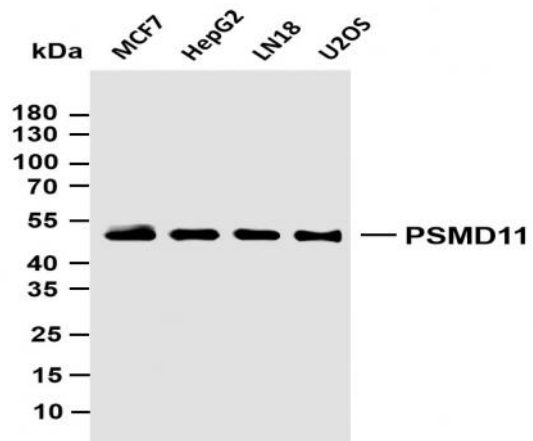
<b>Catalog No :</b>	YM4769
<b>Reactivity :</b>	Human;Mouse;Rat;
<b>Applications :</b>	WB;IF;ELISA
<b>Target :</b>	PSMD11
<b>Fields :</b>	>>Proteasome;>>Alzheimer disease;>>Parkinson disease;>>Amyotrophic lateral sclerosis;>>Huntington disease;>>Spinocerebellar ataxia;>>Prion disease;>>Pathways of neurodegeneration - multiple diseases;>>Epstein-Barr virus infection
<b>Gene Name :</b>	PSMD11
<b>Protein Name :</b>	26S proteasome non-ATPase regulatory subunit 11
<b>Human Gene Id :</b>	5717
<b>Human Swiss Prot No :</b>	O00231
<b>Mouse Gene Id :</b>	69077
<b>Mouse Swiss Prot No :</b>	Q8BG32
<b>Immunogen :</b>	Synthesized peptide derived from human protein.AA range:250-350
<b>Specificity :</b>	This antibody detects endogenous levels of PSMD11.
<b>Formulation :</b>	PBS, 50% glycerol, 0.05% Proclin 300, 0.05%BSA
<b>Source :</b>	Mouse, Monoclonal/IgG3, kappa
<b>Dilution :</b>	WB 1:500-2000. IF 1:100-500. ELISA 1:1000-5000
<b>Purification :</b>	Protein G
<b>Storage Stability :</b>	-15°C to -25°C/1 year(Do not lower than -25°C)

---

<b>Molecularweight :</b>	47kD
<b>Observed Band :</b>	47kD
<b>Cell Pathway :</b>	Proteasome;
<b>Background :</b>	<p>The 26S proteasome is a multicatalytic proteinase complex with a highly ordered structure composed of 2 complexes, a 20S core and a 19S regulator. The 20S core is composed of 4 rings of 28 non-identical subunits; 2 rings are composed of 7 alpha subunits and 2 rings are composed of 7 beta subunits. The 19S regulator is composed of a base, which contains 6 ATPase subunits and 2 non-ATPase subunits, and a lid, which contains up to 10 non-ATPase subunits. Proteasomes are distributed throughout eukaryotic cells at a high concentration and cleave peptides in an ATP/ubiquitin-dependent process in a non-lysosomal pathway. This gene encodes a member of the proteasome subunit S9 family that functions as a non-ATPase subunit of the 19S regulator and is phosphorylated by AMP-activated protein kinase. Alternatively spliced transcript variants have been observed for this gene. [provided by RefSeq,</p>
<b>Function :</b>	<p>function:Acts as a regulatory subunit of the 26S proteasome which is involved in the ATP-dependent degradation of ubiquitinated proteins.,similarity:Belongs to the proteasome subunit S9 family.,similarity:Contains 1 PCI domain.,subunit:Component of the PA700 complex.,</p>
<b>Expression :</b>	<p>Highly expressed in embryonic stem cells (ESCs). Expression decreases as ESCs differentiate.</p>
<b>Tag :</b>	hot
<b>Sort :</b>	13126
<b>No4 :</b>	1
<b>Host :</b>	Mouse
<b>Modifications :</b>	Unmodified

---

## Products Images



Various whole cell lysates were separated by 10% SDS-PAGE, and the membrane was blotted with anti-PSMD11 (PTR1354) antibody. The HRP-conjugated Goat anti-Mouse IgG(H + L) antibody was used to detect the antibody. Lane 1: MCF7 Lane 2: HepG2 Lane 3: LN18 Lane 4: U2OS