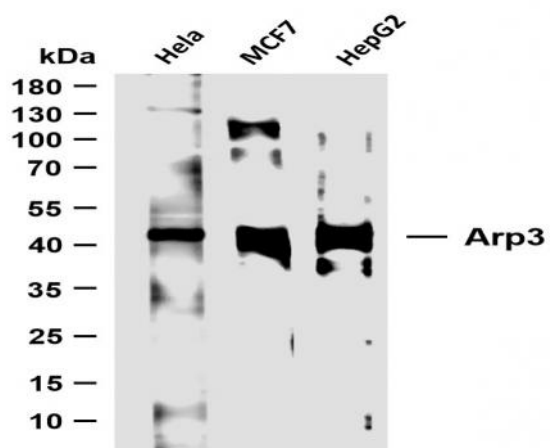


## Arp3 (PTR2148) mouse mAb

<b>Catalog No :</b>	YM4431
<b>Reactivity :</b>	Human;Mouse;Rat;
<b>Applications :</b>	WB;IF;ELISA
<b>Target :</b>	Arp3
<b>Fields :</b>	>>Endocytosis;>>Tight junction;>>Fc gamma R-mediated phagocytosis;>>Regulation of actin cytoskeleton;>>Bacterial invasion of epithelial cells;>>Pathogenic Escherichia coli infection;>>Shigellosis;>>Salmonella infection;>>Yersinia infection
<b>Gene Name :</b>	ACTR3
<b>Protein Name :</b>	Actin-related protein 3
<b>Human Gene Id :</b>	10096
<b>Human Swiss Prot No :</b>	P61158
<b>Mouse Gene Id :</b>	74117
<b>Mouse Swiss Prot No :</b>	Q99JY9
<b>Rat Gene Id :</b>	81732
<b>Rat Swiss Prot No :</b>	Q4V7C7
<b>Immunogen :</b>	Synthesized peptide derived from human ACTR3. AA range:350-418
<b>Specificity :</b>	This antibody detects endogenous levels of Arp3.
<b>Formulation :</b>	PBS, 50% glycerol, 0.05% Proclin 300, 0.05%BSA
<b>Source :</b>	Mouse, Monoclonal/IgG2b, kappa
<b>Dilution :</b>	WB 1:500-2000. IF 1:100-500. ELISA 1:1000-5000

<b>Purification :</b>	Protein G
<b>Storage Stability :</b>	-15°C to -25°C/1 year(Do not lower than -25°C)
<b>Molecularweight :</b>	47kD
<b>Observed Band :</b>	47kD
<b>Cell Pathway :</b>	Regulation of Actin Dynamics; Adherens_Junction; Protein_Acetylation
<b>Background :</b>	The specific function of this gene has not yet been determined; however, the protein it encodes is known to be a major constituent of the ARP2/3 complex. This complex is located at the cell surface and is essential to cell shape and motility through lamellipodial actin assembly and protrusion. Three transcript variants encoding two different isoforms have been found for this gene. [provided by RefSeq, Mar 2013],
<b>Function :</b>	function:Functions as ATP-binding component of the Arp2/3 complex which is involved in regulation of actin polymerization and together with an activating nucleation-promoting factor (NPF) mediates the formation of branched actin networks. Seems to contact the pointed end of the daughter actin filament.,similarity:Belongs to the actin family.,similarity:Belongs to the actin family. ARP3 subfamily.,subunit:Component of the Arp2/3 complex composed of ARP2, ARP3, ARPC1B/p41-ARC, ARPC2/p34-ARC, ARPC3/p21-ARC, ARPC4/p20-ARC and ARPC5/p16-ARC. Interacts with WHDC1.,
<b>Subcellular Location :</b>	Cytoplasmic
<b>Expression :</b>	Brain,Cajal-Retzius cell,T-cell,
<b>Sort :</b>	2273
<b>No4 :</b>	1
<b>Host :</b>	Mouse
<b>Modifications :</b>	Unmodified

## Products Images



Various whole cell lysates were separated by 10% SDS-PAGE, and the membrane was blotted with anti-Arp3 (PTR2148) antibody. The HRP-conjugated Goat anti-Mouse IgG(H + L) antibody was used to detect the antibody. Lane 1: HeLa Lane 2: MCF7 Lane 3: HepG2