

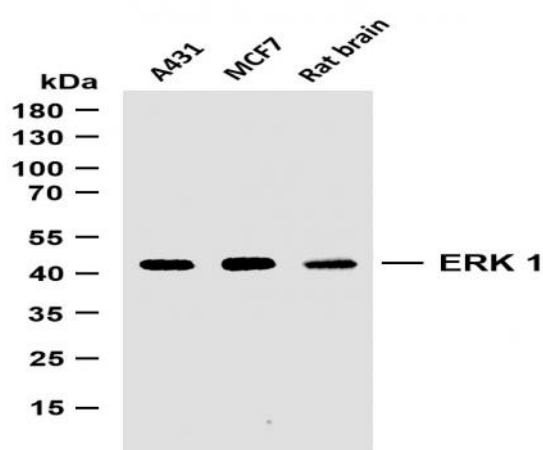
ERK 1 (PTR1168) mouse mAb

Catalog No :	YM4395
Reactivity :	Human;Mouse;Rat;
Applications :	WB;IF;ELISA
Target :	ERK 1
Fields :	>>EGFR tyrosine kinase inhibitor resistance;>>Endocrine resistance;>>Platinum drug resistance;>>MAPK signaling pathway;>>ErbB signaling pathway;>>Ras signaling pathway;>>Rap1 signaling pathway;>>cGMP-PKG signaling pathway;>>cAMP signaling pathway;>>Chemokine signaling pathway;>>HIF-1 signaling pathway;>>FoxO signaling pathway;>>Sphingolipid signaling pathway;>>Phospholipase D signaling pathway;>>Oocyte meiosis;>>Autophagy - animal;>>mTOR signaling pathway;>>PI3K-Akt signaling pathway;>>Apoptosis;>>Cellular senescence;>>Adrenergic signaling in cardiomyocytes;>>Vascular smooth muscle contraction;>>TGF-beta signaling pathway;>>Axon guidance;>>VEGF signaling pathway;>>Apelin signaling pathway;>>Osteoclast differentiation;>>Focal adhesion;>>Adherens junction;>>Gap junction;>>Signaling pathways regulating pluripotency of stem cells;>>Platelet activation;>>Neutrophil extracellular trap formation;>>Toll-like receptor signaling pathway;>>NOD-like receptor signaling pathway;>>C-type lectin recep
Gene Name :	MAPK3
Protein Name :	MAPK3
Human Gene Id :	5595
Human Swiss Prot No :	P27361
Mouse Swiss Prot No :	Q63844
Rat Swiss Prot No :	P21708
Immunogen :	Synthesized peptide derived from human ERK 1 AA range: 150-250
Specificity :	This antibody detects endogenous levels of ERK 1.

Formulation :	<u>PBS, 50% glycerol, 0.05% Proclin 300, 0.05%BSA</u>
Source :	<u>Mouse, Monoclonal/IgG1, kappa</u>
Dilution :	<u>WB 1:500-2000. IF 1:100-500. ELISA 1:1000-5000</u>
Purification :	<u>Protein G</u>
Storage Stability :	<u>-15°C to -25°C/1 year(Do not lower than -25°C)</u>
Molecularweight :	<u>43kD</u>
Observed Band :	<u>44kD</u>
Cell Pathway :	<u>MAPK_ERK_Growth;MAPK_G_Protein;ErbB_HER;Chemokine;Oocyte meiosis;mTOR;Vascular smooth muscle contraction;Dorso-ventral axis formation;TGF-beta;Axon guidance;VEGF;Focal adhesion;Adherens_Junction;Gap j</u>
Background :	<u>The protein encoded by this gene is a member of the MAP kinase family. MAP kinases, also known as extracellular signal-regulated kinases (ERKs), act in a signaling cascade that regulates various cellular processes such as proliferation, differentiation, and cell cycle progression in response to a variety of extracellular signals. This kinase is activated by upstream kinases, resulting in its translocation to the nucleus where it phosphorylates nuclear targets. Alternatively spliced transcript variants encoding different protein isoforms have been described. [provided by RefSeq, Jul 2008],</u>
Function :	<u>catalytic activity:ATP + a protein = ADP + a phosphoprotein.,cofactor:Magnesium.,domain:The TXY motif contains the threonine and tyrosine residues whose phosphorylation activates the MAP kinases.,enzyme regulation:Activated by tyrosine phosphorylation in response to insulin and NGF.,function:Involved in both the initiation and regulation of meiosis, mitosis, and postmitotic functions in differentiated cells by phosphorylating a number of transcription factors such as ELK-1. Phosphorylates EIF4EBP1; required for initiation of translation. Phosphorylates microtubule-associated protein 2 (MAP2). Phosphorylates SPZ1 (By similarity). Phosphorylates heat shock factor protein 4 (HSF4).,PTM:Dually phosphorylated on Thr-202 and Tyr-204, which activates the enzyme.,similarity:Belongs to the protein kinase superfamily.,similarity:Belongs to the protein kinase superfamily. CMGC Ser/Thr protein kinas</u>
Subcellular Location :	<u>Cytoplasmic, Nuclear</u>
Expression :	<u>Epithelium,Eye,Hepatoma,Human cervix,Lymph,</u>

Tag :	<u>orthogonal</u>
Sort :	<u>987</u>
No4 :	<u>1</u>
Host :	<u>Mouse</u>
Modifications :	<u>Unmodified</u>

Products Images



Various whole cell lysates were separated by 10% SDS-PAGE, and the membrane was blotted with anti-ERK 1 (PTR1168) antibody. The HRP-conjugated Goat anti-Mouse IgG(H + L) antibody was used to detect the antibody. Lane 1: A431 Lane 2: MCF7 Lane 3: Rat brain