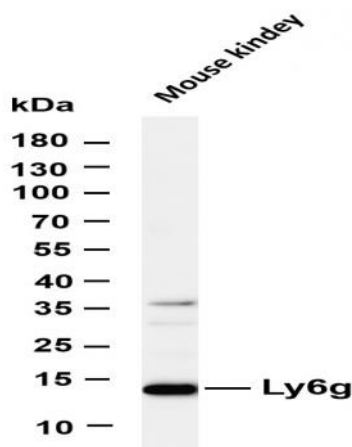


Ly6g (PT0473R) PT® Rabbit mAb

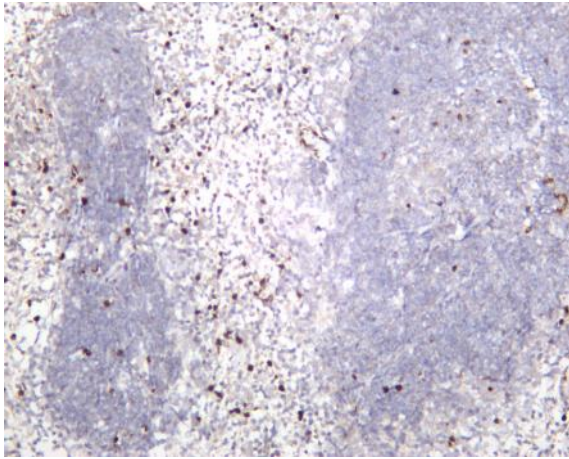
Catalog No :	YM8307
Reactivity :	Mouse;
Applications :	WB;IHC;IF;IP;ELISA
Target :	Ly6g
Gene Name :	Ly6g
Protein Name :	Lymphocyte antigen 6G;Ly-6G;Ly-6G.1;
Mouse Gene Id :	546644
Mouse Swiss Prot No :	P35461
Specificity :	endogenous
Formulation :	PBS, 50% glycerol, 0.05% Proclin 300, 0.05%BSA
Source :	Monoclonal, rabbit, IgG, Kappa
Dilution :	IHC 1:1000-1:4000;WB 1:1000-1:5000;IF 1:200-1:1000;ELISA 1:5000-1:20000;IP 1:50-1:200;
Purification :	Protein A
Storage Stability :	-15°C to -25°C/1 year(Do not lower than -25°C)
Molecularweight :	14kD
Observed Band :	14kD
Background :	Predicted to enable acetylcholine receptor binding activity and acetylcholine receptor inhibitor activity. Predicted to be involved in acetylcholine receptor signaling pathway. Located in external side of plasma membrane. Is expressed in large intestine; small intestine; and spleen. [provided by Alliance of Genome Resources, Nov 2024]

Function :	Ly6G is a GPI-anchored protein, that is also known as the myeloid differentiation antigen Gr1. The antigen is transiently expressed on monocytes in the bone marrow. The level of antigen expression in the bone marrow directly correlates with granulocyte differentiation and maturation. Ly6G is expressed predominantly on neutrophils, also in a subset of eosinophils, differentiating pre-monocytes, and plasmacytoid dendritic cells.
Subcellular Location :	Membrane
Expression :	Expressed in bone marrow.
Tag :	hot,recombinant
Sort :	1
No4 :	1
Host :	Rabbit
Modifications :	Unmodified

Products Images



Various whole cell lysates were separated by 4-20% SDS-PAGE, and the membrane was blotted with anti-Ly6g (PT0473R) antibody. The HRP-conjugated Goat anti-Rabbit IgG(H + L) antibody was used to detect the antibody. Lane 1: Mouse kidney
Predicted band size: 14kDa Observed band size: 14kDa



Mouse spleen was stained with anti-Ly6g (PT0473R) rabbit antibody