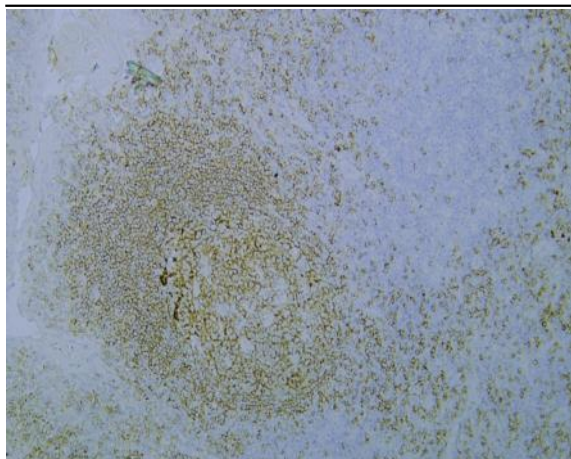


CD19 (PTR2046) mouse mAb

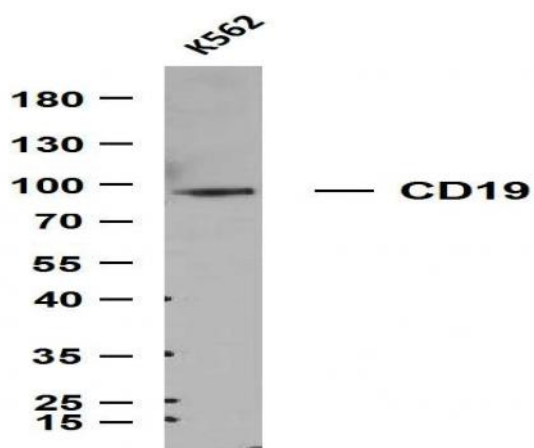
Catalog No :	YM4248
Reactivity :	Human;
Applications :	IHC;WB;IF;ELISA
Target :	CD19
Gene Name :	CD19
Protein Name :	B-lymphocyte antigen CD19 (B-lymphocyte surface antigen B4) (Differentiation antigen CD19) (T-cell surface antigen Leu-12) (CD antigen CD19)
Human Gene Id :	930
Human Swiss Prot No :	P15391
Mouse Gene Id :	12478
Mouse Swiss Prot No :	P25918
Immunogen :	Synthesized peptide derived from human CD19 AA range: 200-300
Specificity :	This antibody detects endogenous levels of CD19 protein.
Formulation :	PBS, 50% glycerol, 0.05% Proclin 300, 0.05%BSA
Source :	Mouse, Monoclonal/IgG
Dilution :	IHC 1:200-1000. WB 1:500-2000. IF 1:100-500. ELISA 1:1000-5000
Purification :	Protein G
Concentration :	1 mg/ml
Storage Stability :	-15°C to -25°C/1 year(Do not lower than -25°C)

Molecularweight :	61kD
Observed Band :	95kD
Background :	CD19 molecule(CD19) Homo sapiens Lymphocytes proliferate and differentiate in response to various concentrations of different antigens. The ability of the B cell to respond in a specific, yet sensitive manner to the various antigens is achieved with the use of low-affinity antigen receptors. This gene encodes a cell surface molecule which assembles with the antigen receptor of B lymphocytes in order to decrease the threshold for antigen receptor-dependent stimulation. [provided by RefSeq, Jul 2008],
Function :	Functions as coreceptor for the B-cell antigen receptor complex (BCR) on B-lymphocytes. Decreases the threshold for activation of downstream signaling pathways and for triggering B-cell responses to antigens . Activates signaling pathways that lead to the activation of phosphatidylinositol 3-kinase and the mobilization of intracellular Ca(2+) stores . Is not required for early steps during B cell differentiation in the blood marrow . Required for normal differentiation of B-1 cells (By similarity). Required for normal B cell differentiation and proliferation in response to antigen challenges . Required for normal levels of serum immunoglobulins, and for production of high-affinity antibodies in response to antigen challenge .
Subcellular Location :	Membranous
Expression :	Detected on marginal zone and germinal center B cells in lymph nodes (PubMed:2463100). Detected on blood B cells (at protein level) (PubMed:2463100, PubMed:16672701).
Tag :	Hot
Sort :	15
No4 :	1
Host :	Mouse
Modifications :	Unmodified

Products Images



Human tonsil tissue was stained with Anti-CD19 (PTR2046) Antibody



Whole cell lysates were separated by 10% SDS-PAGE, and the membrane was blotted with anti-CD19 (PTR2046) antibody. The HRP-conjugated Goat anti-Mouse IgG(H + L) antibody was used to detect the antibody. Lane 1: K562