

CRHR2 (PTR1205) mouse mAb

Catalog No :	YM4731
Reactivity :	Human;Mouse;Rat;
Applications :	WB;IF;ELISA
Target :	CRHR2
Gene Name :	CRHR2 CRF2R CRH2R
Protein Name :	Corticotropin-releasing factor receptor 2 (CRF-R-2) (CRF-R2) (CRFR-2) (Corticotropin-releasing hormone receptor 2) (CRH-R-2) (CRH-R2)
Human Gene Id :	1395
Human Swiss Prot No :	Q13324
Mouse Swiss Prot No :	Q60748
Immunogen :	Synthesized peptide derived from human CRHR2 AA range: 50-150
Specificity :	This antibody detects endogenous levels of CRHR2 protein.
Formulation :	PBS, 50% glycerol, 0.05% Proclin 300, 0.05%BSA
Source :	Mouse, Monoclonal/IgG2b, kappa
Dilution :	WB 1:500-2000. IF 1:100-500. ELISA 1:1000-5000
Purification :	Protein G
Concentration :	1 mg/ml
Storage Stability :	-15°C to -25°C/1 year(Do not lower than -25°C)
Molecularweight :	47kD

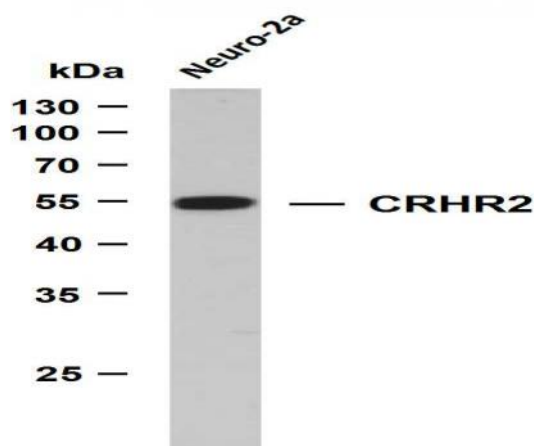
Observed Band : 47kD

Background : corticotropin releasing hormone receptor 2(CRHR2) Homo sapiens The protein encoded by this gene belongs to the G-protein coupled receptor 2 family, and the subfamily of corticotropin releasing hormone receptor. This receptor shows high affinity for corticotropin releasing hormone (CRH), and also binds CRH-related peptides such as urocortin. CRH is synthesized in the hypothalamus, and plays an important role in coordinating the endocrine, autonomic, and behavioral responses to stress and immune challenge. Studies in mice suggest that this receptor maybe involved in mediating cardiovascular homeostasis. Alternatively spliced transcript variants encoding different isoforms have been described for this gene.[provided by RefSeq, Jan 2011],

Function : G-protein coupled receptor for CRH (corticotropin-releasing factor), UCN (urocortin), UCN2 and UCN3. Has high affinity for UCN. Ligand binding causes a conformation change that triggers signaling via guanine nucleotide-binding proteins (G proteins) and down-stream effectors, such as adenylate cyclase. Promotes the activation of adenylate cyclase, leading to increased intracellular cAMP levels.

Tag : Hot**Sort :** 15**No4 :** 1**Host :** Mouse**Modifications :** Unmodified

Products Images



Whole cell lysates were separated by 12% SDS-PAGE, and the membrane was blotted with anti-CRHR2 (PTR1319) antibody. The HRP-conjugated Goat anti-Mouse IgG(H + L) antibody was used to detect the antibody. Lane 1: Neuro-2a