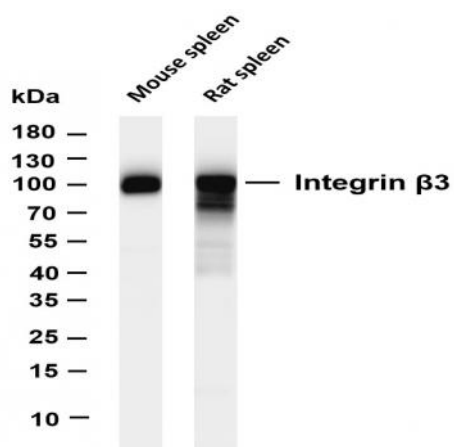


**Integrin  $\beta$ 3 (PT0445R) PT<sup>®</sup> Rabbit mAb**

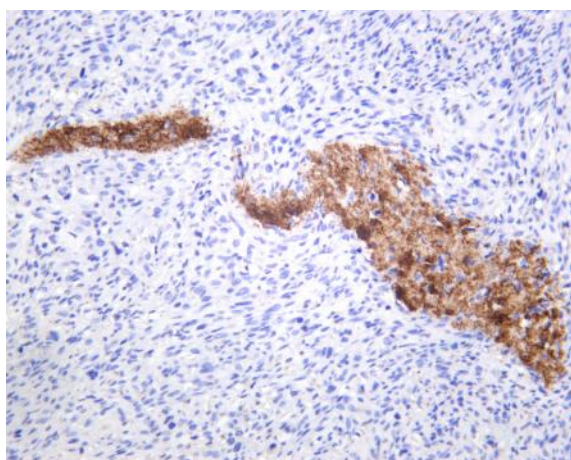
<b>Catalog No :</b>	YM8284
<b>Reactivity :</b>	Human; Mouse; Rat;
<b>Applications :</b>	WB;IHC;IF;IP;ELISA
<b>Target :</b>	Integrin $\beta$ 3
<b>Fields :</b>	>>Rap1 signaling pathway;>>Phagosome;>>PI3K-Akt signaling pathway;>>Osteoclast differentiation;>>Focal adhesion;>>ECM-receptor interaction;>>Platelet activation;>>Neutrophil extracellular trap formation;>>Hematopoietic cell lineage;>>Regulation of actin cytoskeleton;>>Thyroid hormone signaling pathway;>>Human cytomegalovirus infection;>>Human papillomavirus infection;>>Herpes simplex virus 1 infection;>>Proteoglycans in cancer;>>MicroRNAs in cancer;>>Hypertrophic cardiomyopathy;>>Arrhythmogenic right ventricular cardiomyopathy;>>Dilated cardiomyopathy;>>Fluid shear stress and atherosclerosis
<b>Gene Name :</b>	ITGB3 GP3A
<b>Protein Name :</b>	Integrin beta-3 (Platelet membrane glycoprotein IIIa) (GPIIIa) (CD antigen CD61)
<b>Human Gene Id :</b>	3690
<b>Human Swiss Prot No :</b>	P05106
<b>Mouse Gene Id :</b>	16416
<b>Mouse Swiss Prot No :</b>	O54890
<b>Specificity :</b>	endogenous
<b>Formulation :</b>	PBS, 50% glycerol, 0.05% Proclin 300, 0.05%BSA
<b>Source :</b>	Monoclonal, rabbit, IgG, Kappa
<b>Dilution :</b>	IHC 1:1000-1:4000;WB 1:500-1:2000;IF 1:200-1:1000;ELISA 1:5000-1:20000;IP 1:50-1:200;

<b>Purification :</b>	Protein A
<b>Storage Stability :</b>	-15°C to -25°C/1 year(Do not lower than -25°C)
<b>Molecularweight :</b>	87kD
<b>Observed Band :</b>	100kD
<b>Background :</b>	<p>integrin subunit beta 3(ITGB3) Homo sapiens The ITGB3 protein product is the integrin beta chain beta 3. Integrins are integral cell-surface proteins composed of an alpha chain and a beta chain. A given chain may combine with multiple partners resulting in different integrins. Integrin beta 3 is found along with the alpha IIb chain in platelets. Integrins are known to participate in cell adhesion as well as cell-surface mediated signalling. [provided by RefSeq, Jul 2008],</p>
<b>Function :</b>	<p>disease:Defects in ITGB3 are a cause of Glanzmann thrombasthenia (GT) [MIM:273800]; also known as thrombasthenia of Glanzmann and Naegeli. GT is the most common inherited disease of platelets. Its inheritance is autosomal recessive. It is characterized by mucocutaneous bleeding of mild-to-moderate severity and the inability of this integrin to recognize macromolecular or synthetic peptide ligands. GT has been classified clinically into types I and II. In type I, platelets show absence of the glycoprotein IIb-IIIa complexes at their surface and lack fibrinogen and clot retraction capability. In type II, the platelets express the GPIIb-IIIa complex at reduced levels (5-20% controls), have detectable amounts of fibrinogen, and have low or moderate clot retraction capability. The platelets of GT variants have normal or near normal (60-100%) expression of dysfunctional receptors.,function:Int</p>
<b>Subcellular Location :</b>	Membrane
<b>Expression :</b>	Isoform beta-3A and isoform beta-3C are widely expressed. Isoform beta-3A is specifically expressed in osteoblast cells; isoform beta-3C is specifically expressed in prostate and testis.
<b>Tag :</b>	hot,recombinant
<b>Sort :</b>	1
<b>No4 :</b>	1
<b>Host :</b>	Rabbit
<b>Modifications :</b>	Unmodified

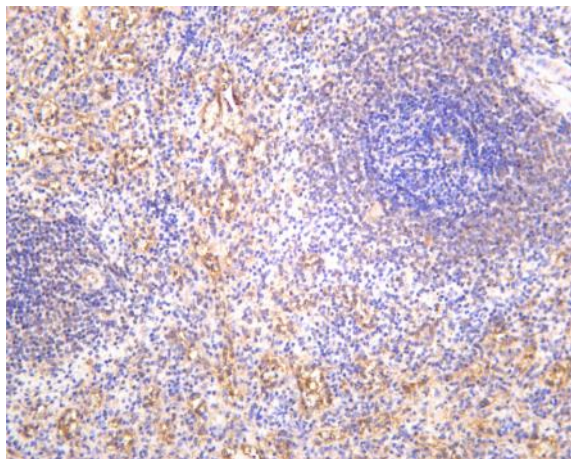
## Products Images



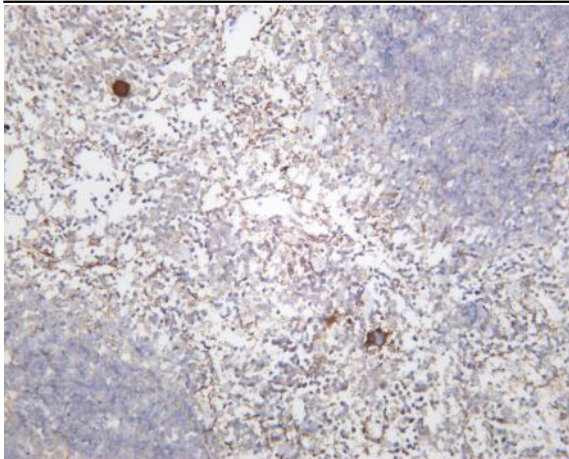
Various whole cell lysates were separated by 4-20% SDS-PAGE, and the membrane was blotted with anti-Integrin  $\beta 3$  (PT0445R) antibody. The HRP-conjugated Goat anti-Rabbit IgG(H + L) antibody was used to detect the antibody. Lane 1: Mouse spleen Lane 2: Rat spleen Predicted band size: 87kDa Observed band size: 100kDa



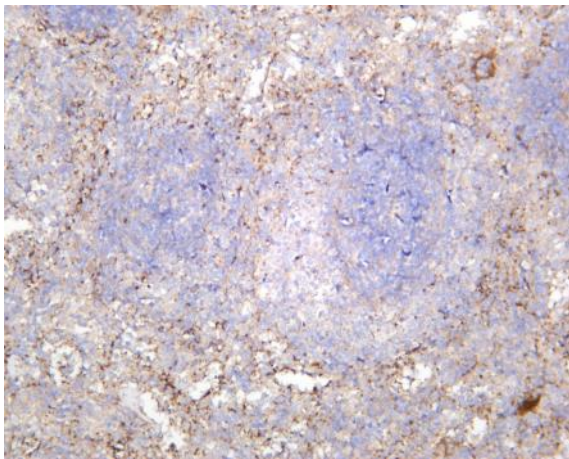
Human osteosarcomas was stained with anti-Integrin  $\beta 3$  (PT0445R) rabbit antibody



Human spleen was stained with anti-Integrin  $\beta 3$  (PT0445R) rabbit antibody



Mouse spleen was stained with anti-Integrin  $\beta 3$  (PT0445R) rabbit antibody



Rat spleen was stained with anti-Integrin  $\beta 3$  (PT0445R) rabbit antibody