

**G3BP1 (PTR1324) mouse mAb**

<b>Catalog No :</b>	YM4539
<b>Reactivity :</b>	Human;Mouse;Rat;
<b>Applications :</b>	WB;IF;ELISA
<b>Target :</b>	G3BP1
<b>Gene Name :</b>	G3BP1 G3BP
<b>Protein Name :</b>	Ras GTPase-activating protein-binding protein 1 (G3BP-1) (EC 3.6.4.12) (EC 3.6.4.13) (ATP-dependent DNA helicase VIII) (hDH VIII) (GAP SH3 domain-binding protein 1)
<b>Human Gene Id :</b>	10146
<b>Human Swiss Prot No :</b>	Q13283
<b>Mouse Gene Id :</b>	27041
<b>Mouse Swiss Prot No :</b>	P97855
<b>Immunogen :</b>	Synthesized peptide derived from human protein. AA range: 200-300
<b>Specificity :</b>	This antibody detects endogenous levels of G3BP1 protein.
<b>Formulation :</b>	PBS, 50% glycerol, 0.05% Proclin 300, 0.05%BSA
<b>Source :</b>	Mouse, Monoclonal/IgG2b, kappa
<b>Dilution :</b>	WB 1:500-2000. IF 1:100-500. ELISA 1:1000-5000
<b>Purification :</b>	Protein G
<b>Concentration :</b>	1 mg/ml
<b>Storage Stability :</b>	-15°C to -25°C/1 year(Do not lower than -25°C)

**Molecularweight :** 52kD

---

**Observed Band :** 68kD

---

**Background :** G3BP stress granule assembly factor 1 (G3BP1) Homo sapiens This gene encodes one of the DNA-unwinding enzymes which prefers partially unwound 3'-tailed substrates and can also unwind partial RNA/DNA and RNA/RNA duplexes in an ATP-dependent fashion. This enzyme is a member of the heterogeneous nuclear RNA-binding proteins and is also an element of the Ras signal transduction pathway. It binds specifically to the Ras-GTPase-activating protein by associating with its SH3 domain. Several alternatively spliced transcript variants of this gene have been described, but the full-length nature of some of these variants has not been determined. [provided by RefSeq, Jul 2008],

---

**Function :** ATP- and magnesium-dependent helicase that plays an essential role in innate immunity . Participates in the DNA-triggered cGAS/STING pathway by promoting the DNA binding and activation of CGAS. Enhances also DDX58-induced type I interferon production probably by helping DDX58 at sensing pathogenic RNA . In addition, plays an essential role in stress granule formation . Unwinds preferentially partial DNA and RNA duplexes having a 17 bp annealed portion and either a hanging 3' tail or hanging tails at both 5'- and 3'-ends . Unwinds DNA/DNA, RNA/DNA, and RNA/RNA substrates with comparable efficiency . Acts unidirectionally by moving in the 5' to 3' direction along the bound single-stranded DNA . Phosphorylation-dependent sequence-specific endoribonuclease in vitro . Cleaves exclusively between cytosine and adenine and cleaves MYC mRNA preferentially at the 3'-UTR .

---

**Expression :** Ubiquitous.

---

**Sort :** 1

---

**No4 :** 1

---

**Host :** Mouse

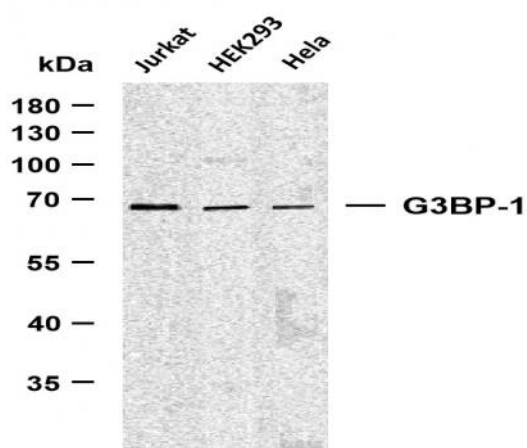
---

**Modifications :** Unmodified

---

---

**Products Images**



Various whole cell lysates were separated by 10% SDS-PAGE, and the membrane was blotted with anti-G3BP-1 (PTR1324) antibody. The HRP-conjugated Goat anti-Mouse IgG(H + L) antibody was used to detect the antibody. Lane 1: Jurkat Lane 2: HEK293 Lane 3: HeLa