

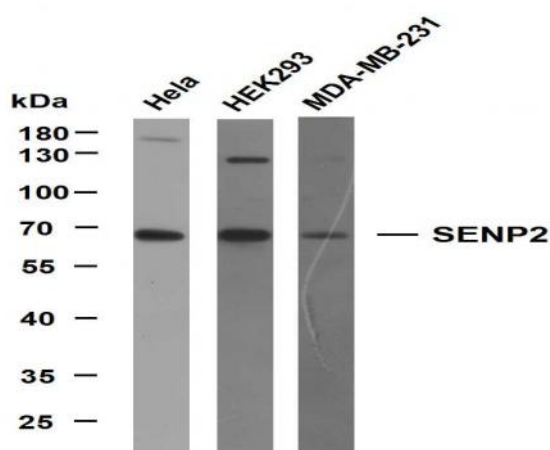
SENP2 (PTR2320) mouse mAb

Catalog No :	YM4270
Reactivity :	Human;
Applications :	WB;IF;ELISA
Target :	SENP2
Fields :	>>Nucleocytoplasmic transport;>>Wnt signaling pathway
Gene Name :	SENP2 KIAA1331
Protein Name :	SENP2
Human Gene Id :	59343
Human Swiss Prot No :	Q9HC62
Immunogen :	Synthesized peptide derived from human SENP2 AA range: 430-526
Specificity :	This antibody detects endogenous levels of SENP2 protein.
Formulation :	PBS, 50% glycerol, 0.05% Proclin 300, 0.05%BSA
Source :	Mouse, Monoclonal/IgG1, kappa
Dilution :	WB 1:500-2000. IF 1:100-500. ELISA 1:1000-5000
Purification :	Protein G
Storage Stability :	-15°C to -25°C/1 year(Do not lower than -25°C)
Molecularweight :	68kD
Observed Band :	65kD
Background :	SUMO1 (UBL1; MIM 601912) is a small ubiquitin-like protein that can be

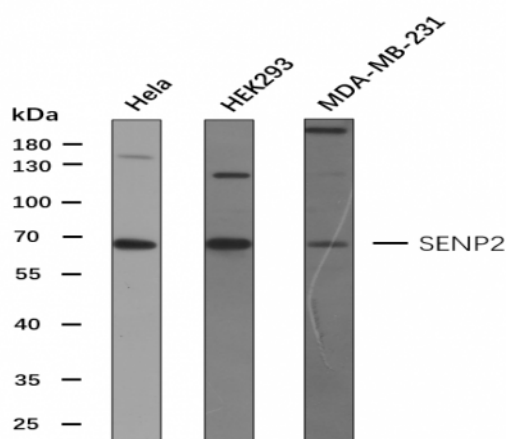
covalently conjugated to other proteins. SENP2 is one of a group of enzymes that process newly synthesized SUMO1 into the conjugatable form and catalyze the deconjugation of SUMO1-containing species.[supplied by OMIM, Apr 2004],

Tag :	hot
Sort :	16223
No4 :	1
Host :	Mouse
Modifications :	Unmodified

Products Images



Various whole cell lysates were separated by 10% SDS-PAGE, and the membrane was blotted with anti-SENP2(PTR2320)antibody. The HRP-conjugated Goat anti-Mouse IgG(H + L) antibody was used to detect the antibody. Lane 1: HeLa Lane 2: HEK293 Lane 3: MDA-MB-231



Various whole cell lysates (30ug) were separated by 10% SDS-PAGE, and the membrane was blotted with SENP2 antibody at 1ug/ml. The HRP-conjugated anti-Mouse IgG antibody(Cat:RS0001) was used to detect the antibody.