

## CD3G Polyclonal Antibody

<b>Catalog No :</b>	YN2840
<b>Reactivity :</b>	Human;Mouse;Rat
<b>Applications :</b>	WB;ELISA
<b>Target :</b>	CD3G
<b>Fields :</b>	>>Hematopoietic cell lineage;>>Th1 and Th2 cell differentiation;>>Th17 cell differentiation;>>T cell receptor signaling pathway;>>Chagas disease;>>Measles;>>Human T-cell leukemia virus 1 infection;>>Epstein-Barr virus infection;>>Human immunodeficiency virus 1 infection;>>PD-L1 expression and PD-1 checkpoint pathway in cancer
<b>Gene Name :</b>	CD3G T3G
<b>Protein Name :</b>	T-cell surface glycoprotein CD3 gamma chain (T-cell receptor T3 gamma chain) (CD antigen CD3g)
<b>Human Gene Id :</b>	917
<b>Human Swiss Prot No :</b>	P09693
<b>Mouse Swiss Prot No :</b>	P11942
<b>Rat Swiss Prot No :</b>	Q64159
<b>Immunogen :</b>	Synthesized peptide derived from part region of human protein
<b>Specificity :</b>	CD3G Polyclonal Antibody detects endogenous levels of protein.
<b>Formulation :</b>	Liquid in PBS containing 50% glycerol, and 0.02% sodium azide.
<b>Source :</b>	Polyclonal, Rabbit,IgG
<b>Dilution :</b>	WB 1:500-2000 ELISA 1:5000-20000
<b>Purification :</b>	The antibody was affinity-purified from rabbit antiserum by affinity-

---

chromatography using epitope-specific immunogen.

---

**Concentration :** 1 mg/ml

---

**Storage Stability :** -15°C to -25°C/1 year(Do not lower than -25°C)

---

**Observed Band :** 20kD

---

**Cell Pathway :** Hematopoietic cell lineage;T\_Cell\_Receptor;

---

**Background :** The protein encoded by this gene is the CD3-gamma polypeptide, which together with CD3-epsilon, -delta and -zeta, and the T-cell receptor alpha/beta and gamma/delta heterodimers, forms the T-cell receptor-CD3 complex. This complex plays an important role in coupling antigen recognition to several intracellular signal-transduction pathways. The genes encoding the epsilon, gamma and delta polypeptides are located in the same cluster on chromosome 11. Defects in this gene are associated with T cell immunodeficiency. [provided by RefSeq, Jul 2008],

---

**Function :** domain:A di-leucine motif and a tyrosine-based motif are individually sufficient to induce both endocytosis and delivery to lysosomes.,function:The CD3 complex mediates signal transduction.,online information:CD3 receptor entry,online information:CD3G mutation db,similarity:Contains 1 Ig-like (immunoglobulin-like) domain.,similarity:Contains 1 ITAM domain.,subunit:The TCR/CD3 complex of T-lymphocytes consists of either a TCR alpha/beta or TCR gamma/delta heterodimer coexpressed at the cell surface with the invariant subunits of CD3 labeled gamma, delta, epsilon, zeta, and eta.,

---

**Subcellular Location :** Cell membrane ; Single-pass type I membrane protein.

---

**Expression :** T-cell,Thymus,

---

**Sort :** 88

---

**No4 :** 1

---

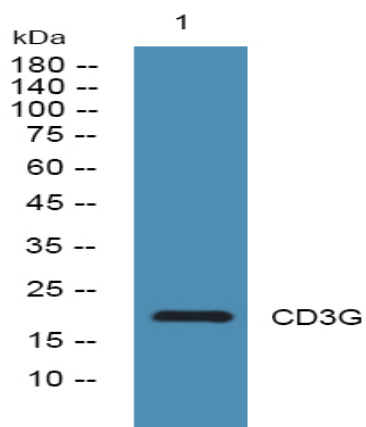
**Host :** Rabbit

---

**Modifications :** Unmodified

---

**Products Images**



Western blot analysis of lysates from A431 cells, primary antibody was diluted at 1:1000, 4° over night