

**Synaptophysin (ABT7R) rabbit mAb**

<b>Catalog No :</b>	YM7214
<b>Reactivity :</b>	Human;
<b>Applications :</b>	IHC; ELISA
<b>Target :</b>	Synaptophysin
<b>Gene Name :</b>	SYP
<b>Protein Name :</b>	Major synaptic vesicle protein p38;MRX96;MRXSYP;Syn p38;Synaptophysin;Syp;SYPH;SYPH_HUMAN;SynI
<b>Human Swiss Prot No :</b>	P08247
<b>Mouse Swiss Prot No :</b>	Q62277
<b>Rat Swiss Prot No :</b>	P07825
<b>Immunogen :</b>	Synthesized peptide derived from human Synaptophysin AA range:50-150
<b>Specificity :</b>	This antibody detects endogenous levels of Synaptophysin
<b>Formulation :</b>	PBS, 50% glycerol, 0.05% Proclin 300, 0.05%BSA
<b>Source :</b>	Monoclonal, Rabbit IgG1, Kappa
<b>Dilution :</b>	IHC 1:100-500, ELISA 1:5000-20000
<b>Purification :</b>	Recombinant Expression and Affinity purified
<b>Storage Stability :</b>	-15°C to -25°C/1 year(Do not lower than -25°C)
<b>Molecularweight :</b>	34kD
<b>Background :</b>	This gene encodes an integral membrane protein of small synaptic vesicles in brain and endocrine cells. The protein also binds cholesterol and is thought to direct targeting of vesicle-associated membrane protein 2 (synaptobrevin) to

intracellular compartments. Mutations in this gene are associated with X-linked mental retardation (XLMR). [provided by RefSeq, Aug 2011],

**Function :** domain:The calcium-binding activity is thought to be localized in the cytoplasmic tail of the protein.,function:Possibly involved in structural functions as organizing other membrane components or in targeting the vesicles to the plasma membrane.,online information:Synaptophysin entry,PTM:Ubiquitinated; mediated by SIAH1 or SIAH2 and leading to its subsequent proteasomal degradation.,similarity:Belongs to the synaptophysin/synaptobrevin family.,similarity:Contains 1 MARVEL domain.,subunit:Homohexamer or homotetramer.,tissue specificity:Characteristic of a type of small (30-80 nm) neurosecretory vesicles, including presynaptic vesicles, but also vesicles of various neuroendocrine cells of both neuronal and epithelial phenotype.,

**Subcellular Location :** Cytoplasmic

**Expression :** Pancreas/ Colon

**Tag :** hot,recombinant

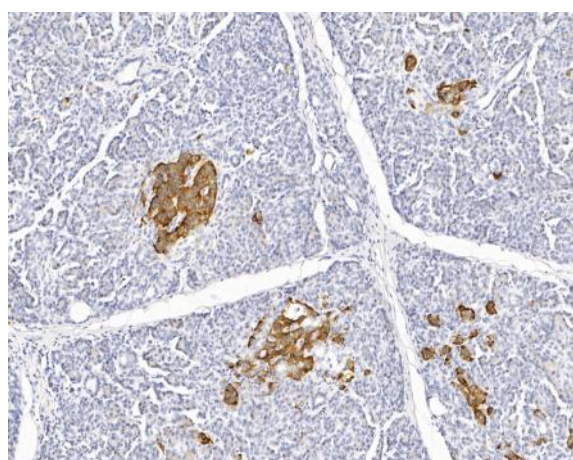
**Sort :** 999

**No4 :** 1

**Host :** Rabbit

**Modifications :** Unmodified

## Products Images



Human pancreas tissue was stained with Anti-Synaptophysin (ABT7R) rabbit Antibody